

Item description/product images



Description

Material:

Steel C45.  
Stainless steel 1.4305.  
Gunmetal Rg 7.

Version:

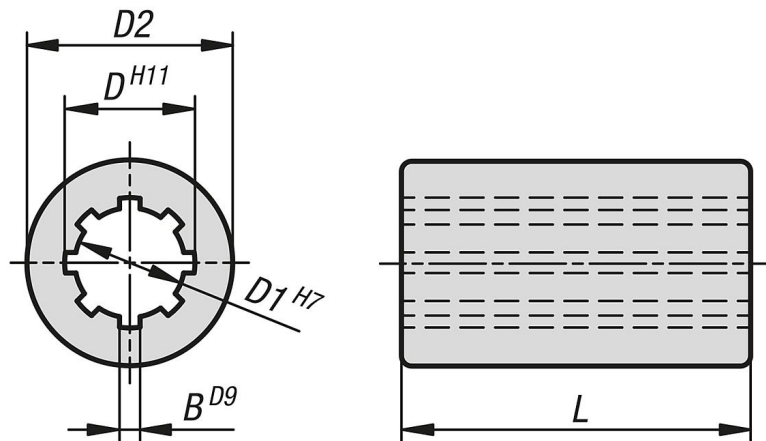
Bright.

Note:

Splined hubs based on DIN ISO 14 with straight, parallel flanks. A splined shaft with splined hub is used to transmit high torques while enabling simultaneous axial movement.

On splined shafts with 6 flanks, the bores are not centred in the slots in both axis.  
On the versions with 8 flanks, the holes are centred on the slots in both axis.

Drawings



Overview of items

Order No.	Main material	Profile	No. of slots	B	D	D1	D2	L
24011-11141	steel	KW11X14	6	3	14	11	20	40
24011-13161	steel	KW13X16	6	3,5	16	13	28	45
24011-16201	steel	KW16X20	6	4	20	16	32	45
24011-18221	steel	KW18X22	6	5	22	18	40	50
24011-21251	steel	KW21X25	6	5	25	21	40	55
24011-23281	steel	KW23X28	6	6	28	23	50	55
24011-26321	steel	KW26X32	6	6	32	26	52	60
24011-32381	steel	KW32X38	8	6	38	32	60	60
24011-36421	steel	KW36X42	8	7	42	36	70	65
24011-42481	steel	KW42X48	8	8	48	42	80	70
24011-46541	steel	KW46X54	8	9	54	46	80	90
24011-11142	stainless steel	KW11X14	6	3	14	11	20	40
24011-13162	stainless steel	KW13X16	6	3,5	16	13	28	45
24011-16202	stainless steel	KW16X20	6	4	20	16	32	45
24011-18222	stainless steel	KW18X22	6	5	22	18	40	50
24011-21252	stainless steel	KW21X25	6	5	25	21	40	55
24011-23282	stainless steel	KW23X28	6	6	28	23	50	55

## Overview of items

Order No.	Main material	Profile	No. of slots	B	D	D1	D2	L
24011-26322	stainless steel	KW26X32	6	6	32	26	52	60
24011-32382	stainless steel	KW32X38	8	6	38	32	60	60
24011-36422	stainless steel	KW36X42	8	7	42	36	70	65
24011-42482	stainless steel	KW42X48	8	8	48	42	80	70
24011-46542	stainless steel	KW46X54	8	9	54	46	80	90
24011-11143	gunmetal	KW11X14	6	3	14	11	20	40
24011-13163	gunmetal	KW13X16	6	3,5	16	13	28	45
24011-16203	gunmetal	KW16X20	6	4	20	16	32	45
24011-18223	gunmetal	KW18X22	6	5	22	18	40	50
24011-21253	gunmetal	KW21X25	6	5	25	21	40	55
24011-23283	gunmetal	KW23X28	6	6	28	23	50	55
24011-26323	gunmetal	KW26X32	6	6	32	26	52	60
24011-32383	gunmetal	KW32X38	8	6	38	32	60	60
24011-36423	gunmetal	KW36X42	8	7	42	36	70	65
24011-42483	gunmetal	KW42X48	8	8	48	42	80	70
24011-46543	gunmetal	KW46X54	8	9	54	46	80	90