

## Item description/product images



## Description

**Product description:**

The functioning principle make the wedge clamps ideal for multi-clamping. The wedge shape creates high clamping forces. These wedge clamps set into a T-slot for clamping. Tightening the clamping screw moves the clamping segments outwards and presses the workpiece against the fixed jaws of the machining fixture. The wedge has a slightly elongated hole allowing for movement to compensate for tolerances. Displacement: M12 =  $\pm 1,0$  mm.

**Material:**

Double wedge and clamping segments mild steel.

**Version:**

Double wedge and clamping segments hardened, phosphated.

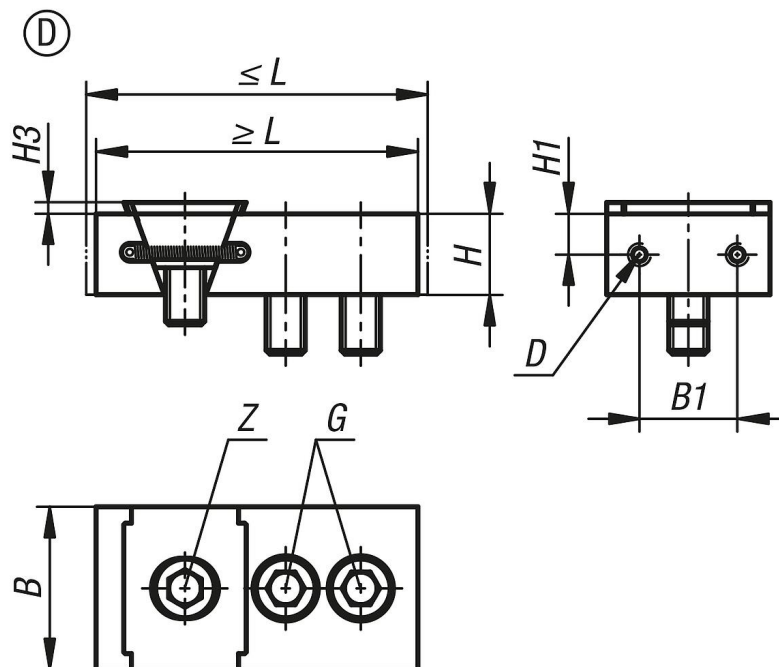
**Note:**

The two screw-on holes in the clamping faces also enable seating ledges to be mounted so as to optimise the clamping depth of the workpieces.

**Supplied with:**

Wedge clamps  
Fastening screws.

## Drawings



## Overview of items

Order No.	Form	L min.	L max.	B	H	B1	H1	H3	D Internal thread	G cap screw DIN 912	Z cap screw DIN 912	Clamping force max. kN	Tightening torque max. Nm
04451-0500412	D	98,5	104,5	50	25	30	12,5	3,5	M5	M12x30	M12x25	30	85

