

## Item description/product images



## Description

**Material:**

Steel or stainless steel 1.4301.

**Version:**

Electro zinc-plated, thick-film passivated and sealed with Top Coat.  
Stainless steel bright.

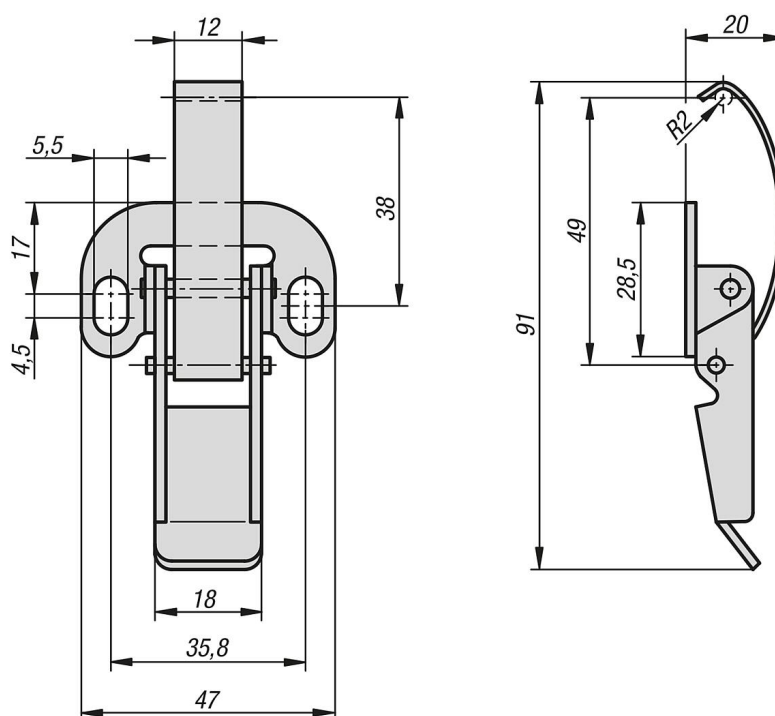
**Note:**

Latches with spring clips for securing and locking hatches, container lids, machine cladding etc. By exceeding the dead centre they resist vibration.  
The locking force is applied by tensioning a spring clip.

The latches can be screwed down or riveted. We recommend using countersunk screws for fastening the components.

Order catch plates separately.

## Drawings



## Overview of items

Order No.	Main material
05526-1550911	0.0048
05526-1550912	250 m / on the roll

