

Item description/product images

**Description****Material:**

Polyamide PA6.

Version:

black.

Note:

Connection protector for connecting an energy chain to a corrugated pipe or an energy chain to a cable duct.

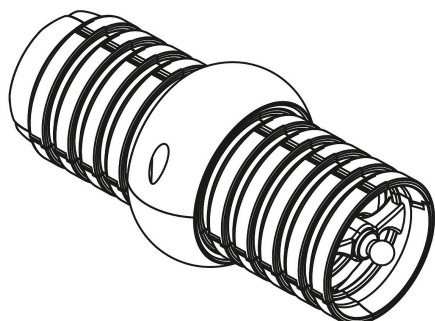
The connection protector consists of two half shells. These are simply slipped over the energy chain/corrugated pipe and fastened with M5x12 cap screws. The protector can still be rotated on the energy chain/corrugated pipe.

Temperature range:

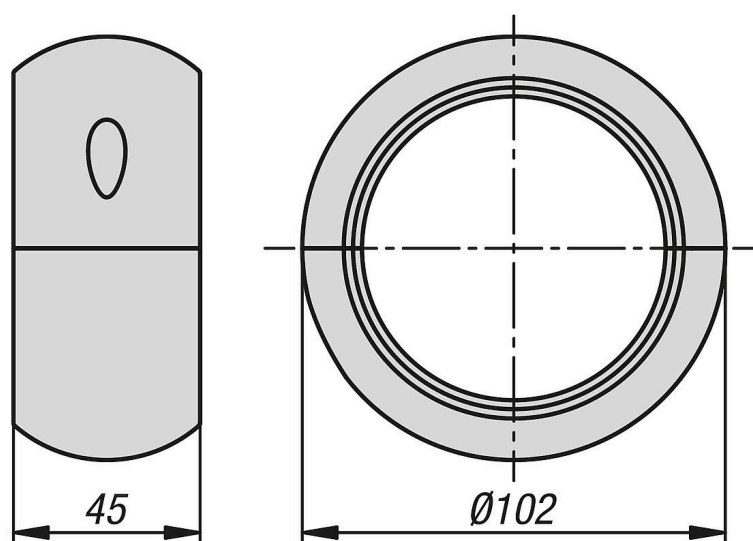
-45 °C to +105 °C (briefly up to +150 °C).

Accessory:

Cable glands 80855-25.



Drawings



Overview of items

Order No.	Nominal size
80855-16-0701	70