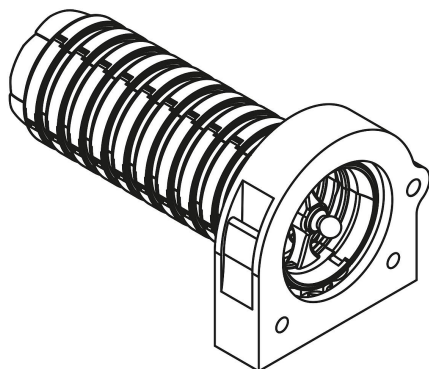


Item description/product images

**Description****Material:**

Polyamide PA6.

Version:

black.

Note:

Connecting elements for holding and fixating energy chains or a corrugated pipes.

Connecting elements are used where energy chains/corrugated pipes are to be held.

Temperature range:

-45 °C to +105 °C (briefly up to +150 °C).

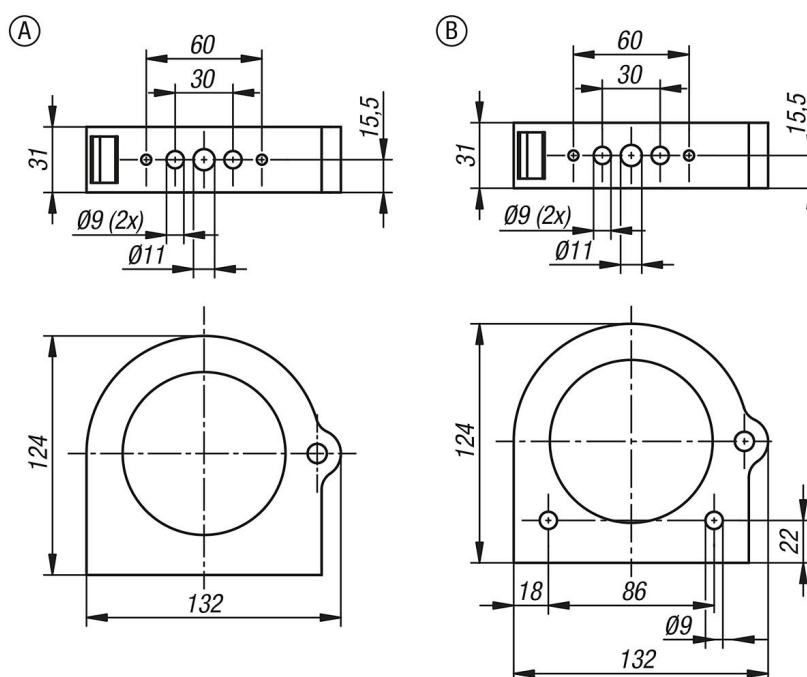
Assembly:

The connection elements can be opened and closed tool-free via a plastic latch. The inner jaws consist of two identical half shells that are fitted on the energy chain via hole-pin connections. The jaws fitted around the energy chain are inserted into the connection element and enable the energy chain to be held securely by means of the internal profiling.

Item description/product images



Drawings



Overview of items

Order No.	Form	Form definition	Nominal size
80855-06-07011	A	standard	70
80855-06-07021	B	front fastening	70

