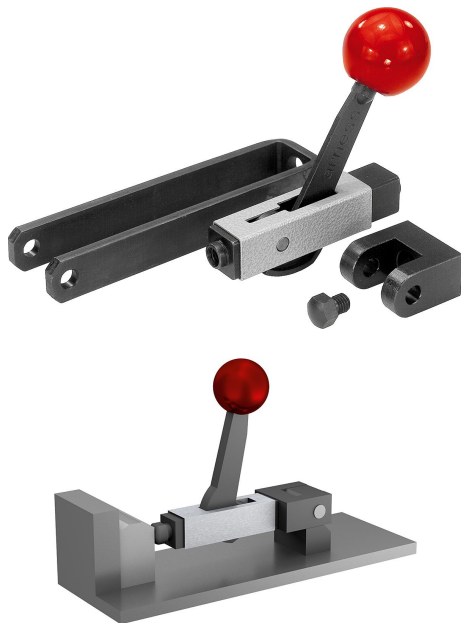


Item description/product images

**Description****Material:**

Steel.

Ball knob thermoset PF 31

Version:

Housing silver-grey, hammer tone enamelled.

All other parts and additional parts black oxidised.

Ball knob, red.

Note:

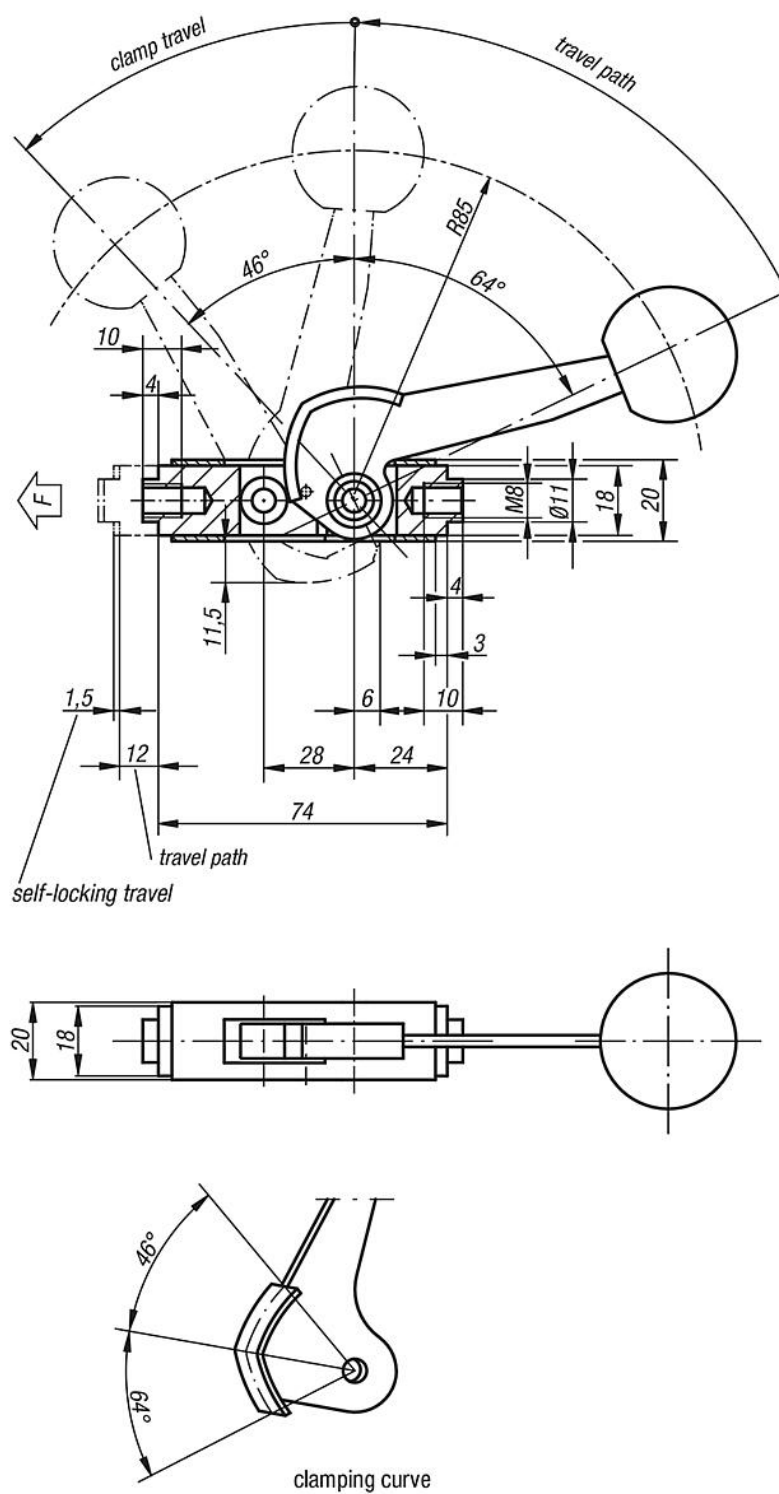
The travel path is 12 mm. Self-locking occurs in any position within only 1.5 mm of clamp travel, allowing workpieces with tolerances of up to 1 mm to be securely clamped. The arness clamping element can be fitted in any horizontal or vertical position.

Several standard parts have been developed to achieve individual adaptation for various circumstances and are available as optional accessories.

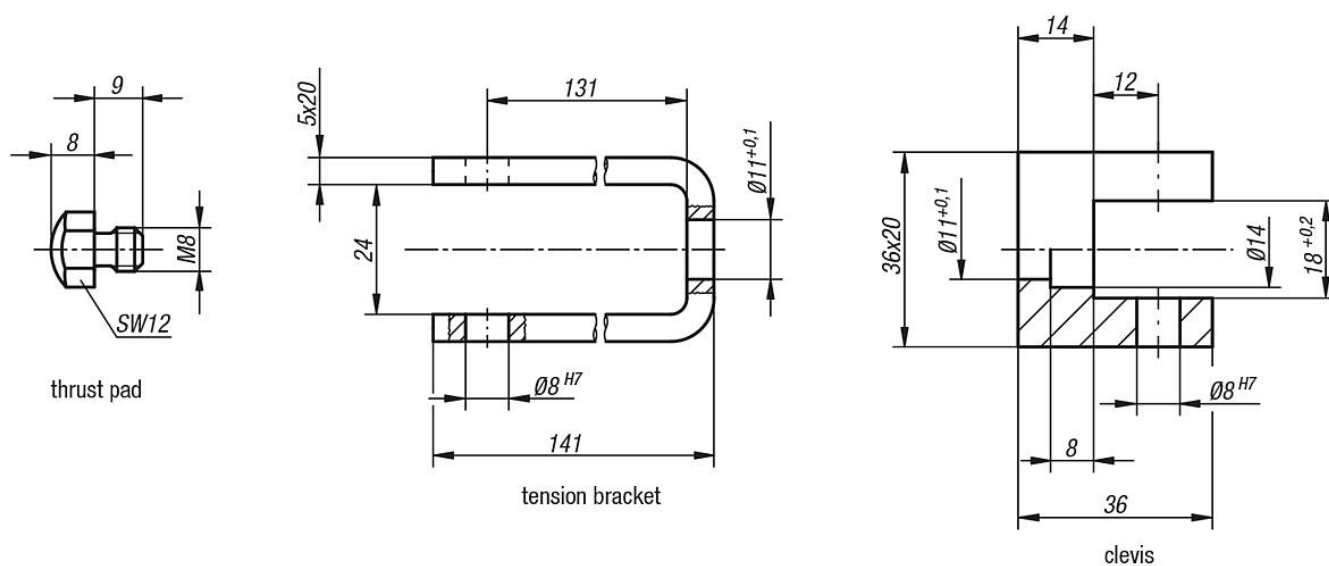
The thrust pad and all parts of the cam system subject to heavy loads are case-hardened.

The maximum permissible clamping force is approximately 4905 N.

Drawings



Drawings



Overview of items

Clamping element "arness"

Order No.	Dimensions
04430-01	see drawing

"arness" accessories

Order No.	Item
04430-02	Clevis
04430-03	Tension bracket
04430-04	Thrust pad