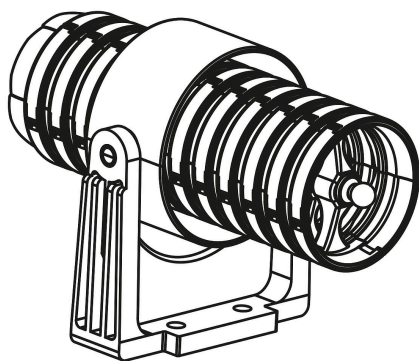


## Item description/product images

**Description****Material:**

Polyamide PA6.

**Version:**

black.

**Note:**

The low-friction cable guide enables the energy chain/corrugated pipe to run smoothly and evenly through the guide. The swivel arms offer more freedom of movement when guiding the energy chains.

**Temperature range:**

-45 °C to +105 °C (briefly up to +150 °C).

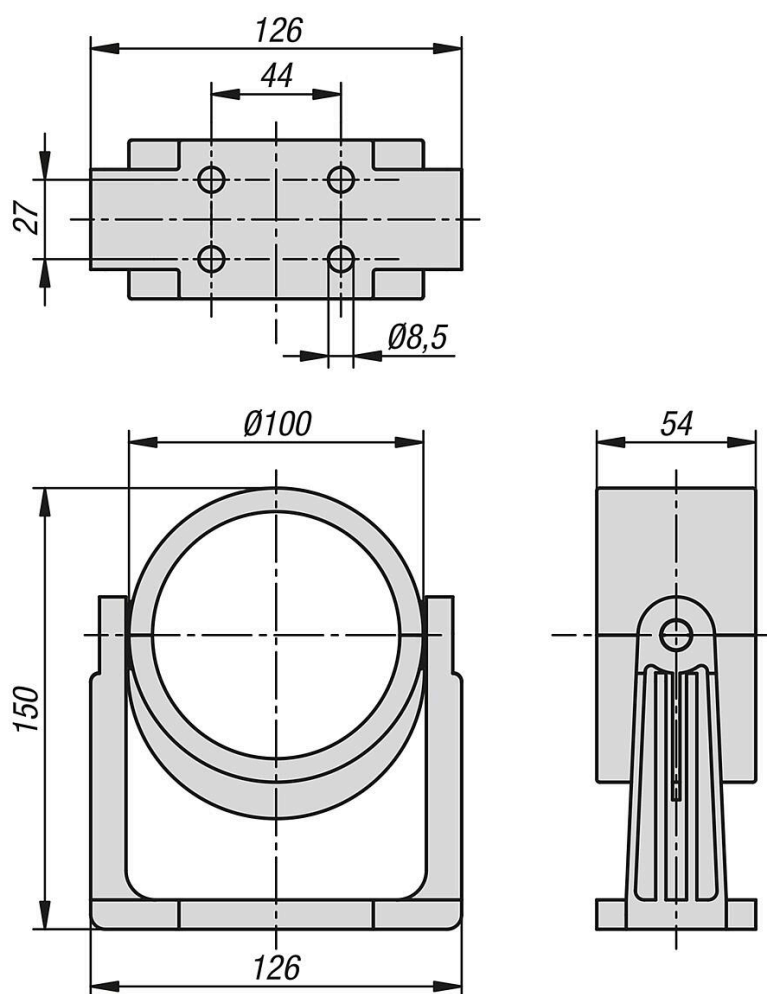
**Assembly:**

The swivel arms are usually mounted on a rotary flange and offer additional freedom of movement compared to just using a rotary flange.

**Accessory:**

Rotary flange 80855-10.

## Drawings



## Overview of items

Order No.	Nominal size
80855-11-0701	70