

Item description/product images

**Description****Material:**

Stainless steel 1.4401.

Version:

Polished or blasted.

Note:

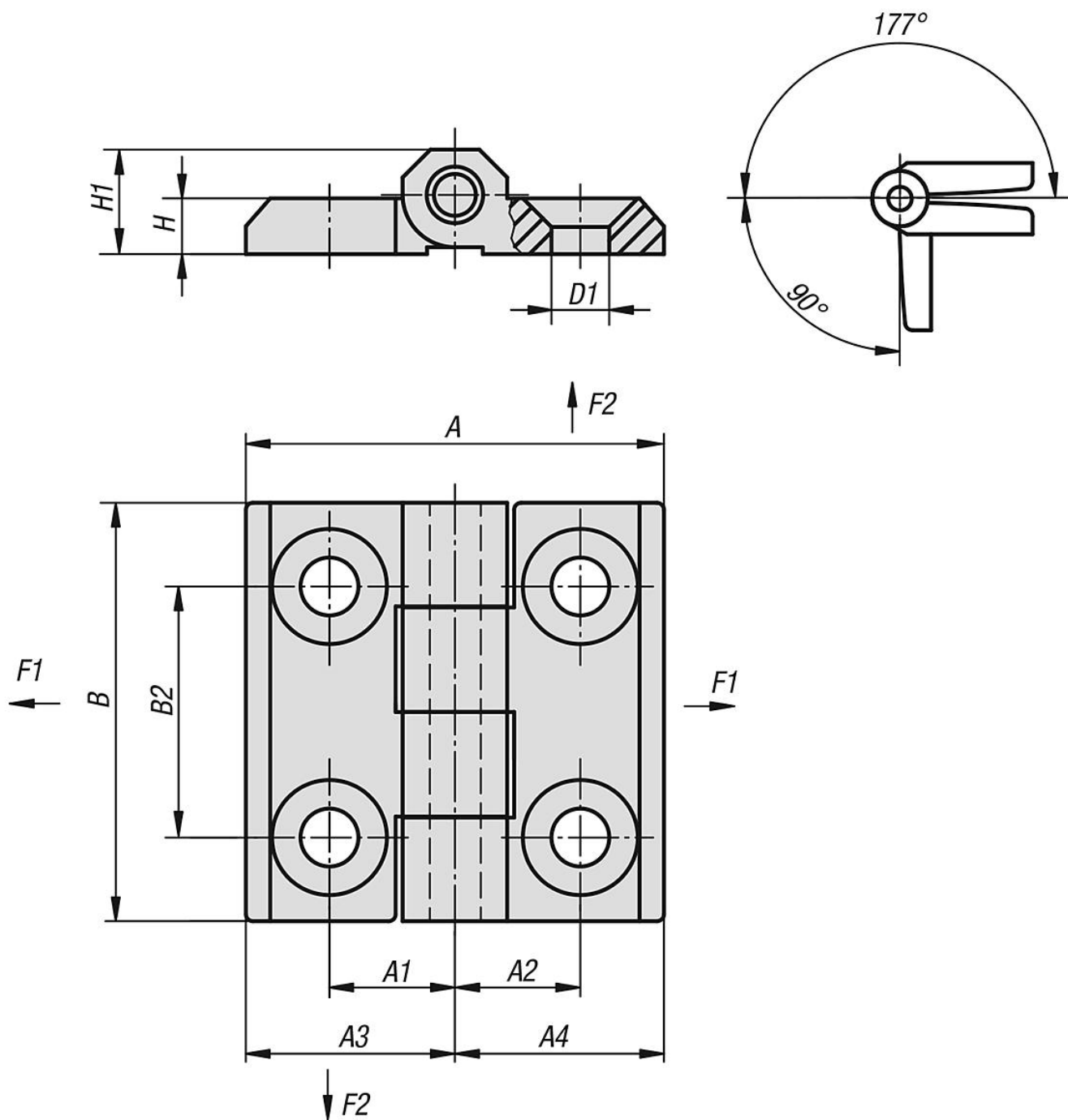
Hinges with fixed pin and countersunk holes.

The loading values given for the hinges are non-binding reference values without consideration of safety factors and exclude any liability. The values given are for information purposes only and do not constitute a legally binding assurance of properties.

The load values have been determined under laboratory conditions. Each user must determine individually whether the hinge is suitable for the respective application.

Different materials onto which the hinges are installed and the type of mounting, weather conditions and wear can influence the determined values.

Drawings



Overview of items

Order No.	Main material	Surface finish body	A	A1	A2	A3	A4	B	B2	D1	H	H1	F1 N	F2 N
27876-052013130	additional carriage for concentricity gauge 32506	from 18.5 to 22.0	39	12,5	12,5	19,5	19,5	39	25	5,5	4	9	800	600
27876-052013131	additional carriage for concentricity gauge 32506	from 2.7 to 3.3	39	12,5	12,5	19,5	19,5	39	25	5,5	4	9	800	600
27876-062515150	additional carriage for concentricity gauge 32506	from 18.5 to 22.0	50	15	15	25	25	50	30	6,5	6	12	1100	900
27876-062515151	additional carriage for concentricity gauge 32506	from 2.7 to 3.3	50	15	15	25	25	50	30	6,5	6	12	1100	900
27876-083018180	Clamping width 21 mm, width approx. 20 mm	from 18.5 to 22.0	60	18	18	30	30	60	36	8,5	8	15	2000	1500
27876-083018181	Clamping width 21 mm, width approx. 20 mm	-	60	18	18	30	30	60	36	8,5	8	15	2000	1500

