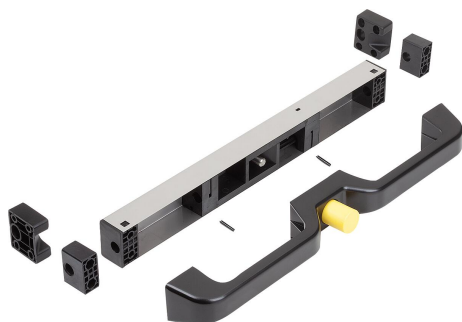


Item description/product images

**Description****Material:**

Grip steel.
Push button plastic.
Rod steel or stainless steel.

Version:

Steel electro zinc-plated.
Stainless steel bright.
Plastic yellow.

Note for ordering:

Rods for locking units are sold in pairs.

Note:

The grip with locking unit can be used for drawers with a width from 1.5 m. The rail thickness must be at least 17.5 mm. The system can be mounted in two positions. Front mounting for drawer retention and rear mounting for drawer retention and latching.

With the aid of the conversion kit for locking unit, the drawer can be locked in both closed and open position.

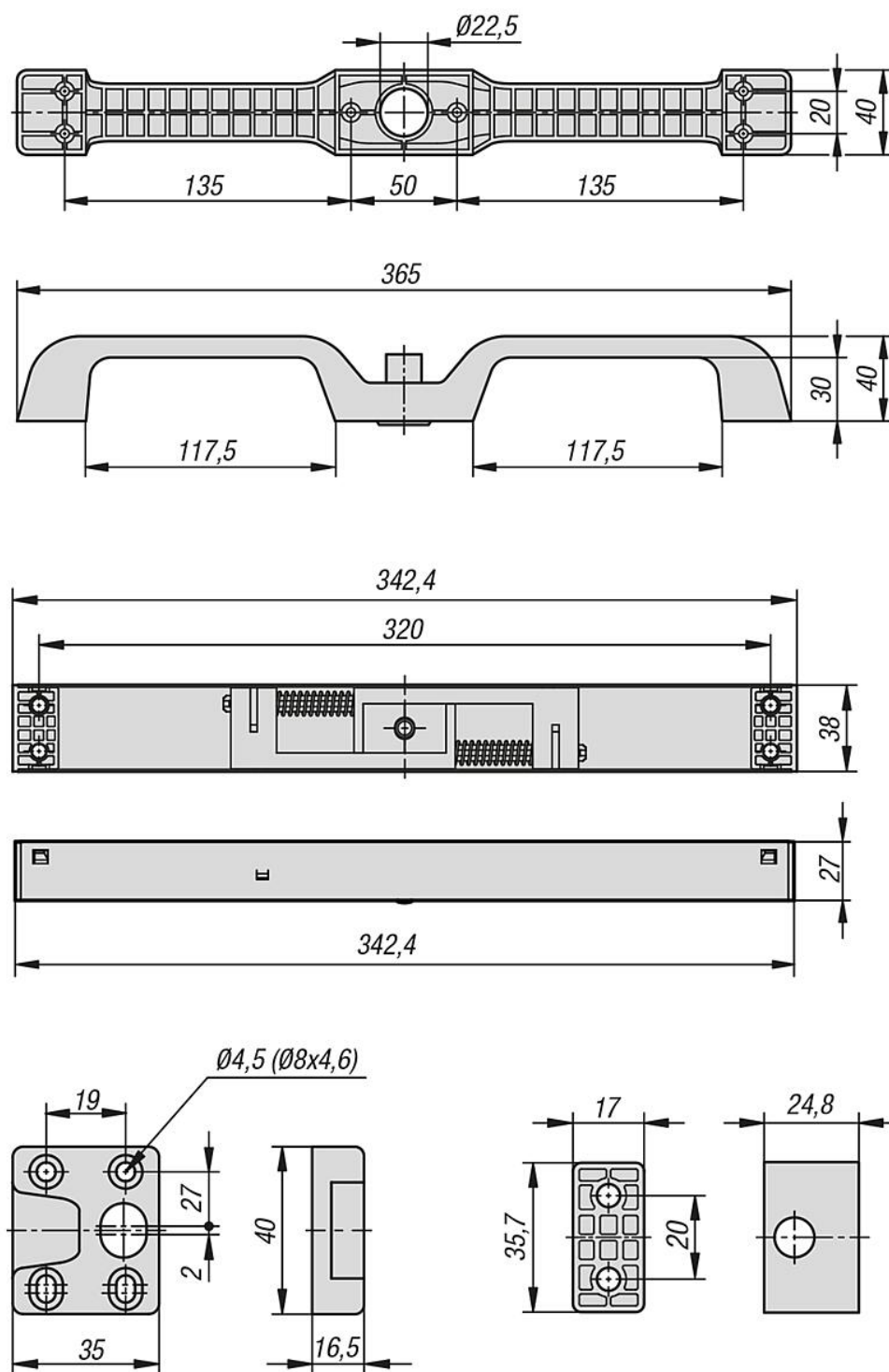
On request:

Red push button.

Accessory:

06894-91 Conversion kit for locking unit.
06894-900500, 06894-900750, 06894-910500, 06894-910750 Rod for locking unit.

Drawings



Overview of items

Order No.	Item	Manufacturers article number	Version 1	Main material	Main colour	Surface finish body	D	L	F= thrust force (N)
06894-060	bright	DBHANL-2	-	0.02	above	for aluminium profiles	-	-	60
06894-120	bright	DBHAND-2	-	0.02	above	for aluminium profiles	-	-	120
06894-91	stainless steel	DYHAN4-5	-	4 sides	Drive	-	-	-	-
06894-900500	Equipotential Bonding	DZHAN3-0100-2	-	0.02	-	for aluminium profiles	10	500	-
06894-900750	Equipotential Bonding	DZHAN3-0150-2	-	0.02	-	for aluminium profiles	10	750	-
06894-910500	Equipotential Bonding	DSHAN3-0100-2	-	3	-	Centring clamp	10	500	-

Overview of items

Order No.	Item	Manufacturers article number	Version 1	Main material	Main colour	Surface finish body	D	L	F= thrust force (N)
06894-910750	Equipotential Bonding	DSHAN3-0150-2	-	3	-	Centring clamp	10	750	-