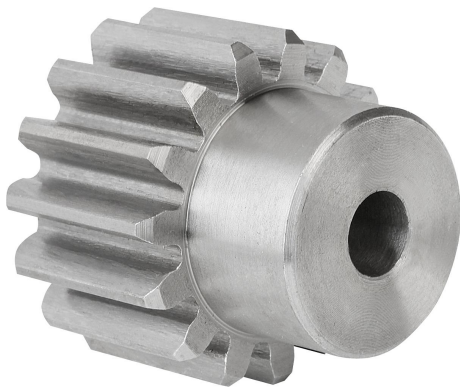


Item description/product images



Description

Material:

Steel 1.0503 (C45).

Version:

Milled tothing, straight teeth.
Engagement angle 20°, bright.

Note:

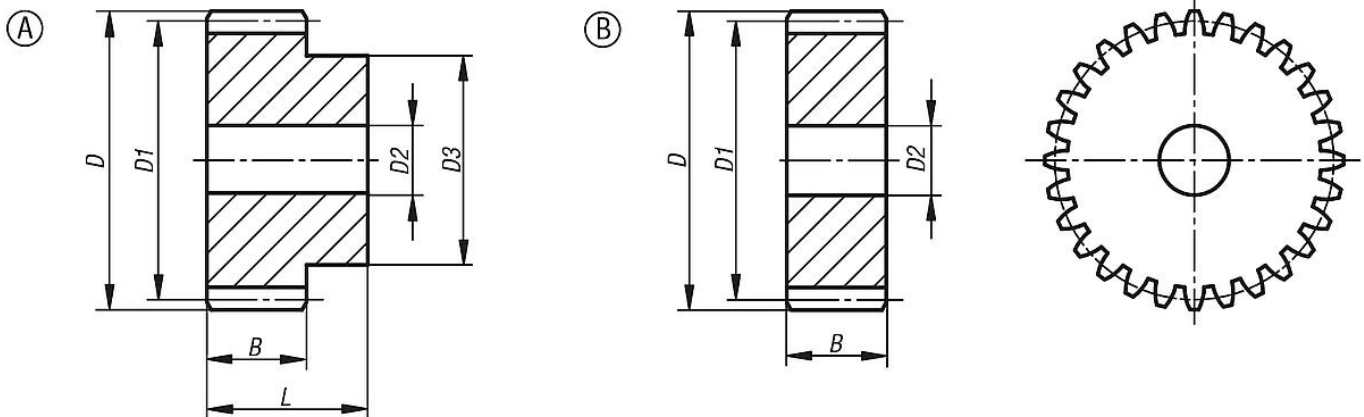
Up to 25 teeth with hub one side, from 28 teeth supplied as disc form. The spur gears have a centre bore or pilot hole (this can vary due to manufacturing methods). For this reason, the dimension D2 max. given in the table is the maximum diameter of the bore with which the spur gears are supplied. This pilot/centre bore can be amended by the customer to produce a reamed bore, reamed bore with keyway or a tapped hole. Alternatively, customers can also use bushes to reduce the bore diameter.

Drawing reference:

Form A: with hub

Form B: without hub

Drawings



Overview of items

Order No.	Form	B	D	D1	D2 max.	D3	L	No. of teeth
22400-0160600012	A	60	84	72	20	54	80	12
22400-0160600013	A	60	90	78	20	60	80	13
22400-0160600015	A	60	102	90	20	70	80	15
22400-0160600016	A	60	108	95	20	75	80	16
22400-0160600018	A	60	120	108	20	80	80	18
22400-0160600020	A	60	132	120	20	90	80	20
22400-0160600024	A	60	156	144	25	110	80	24
22400-0160600025	A	60	162	150	25	110	80	25
22400-0260600028	B	60	180	168	25	-	-	28
22400-0260600030	B	60	192	180	25	-	-	30
22400-0260600032	B	60	204	192	25	-	-	32
22400-0260600035	B	60	222	210	25	-	-	35
22400-0260600038	B	60	240	228	25	-	-	38
22400-0260600040	B	60	252	240	25	-	-	40

