



Description

Material:

Door stop fibreglass reinforced PA.
Buffer EPDM.
Retaining plate steel.
Slot key die-cast zinc.
Screw steel.
Locking piece fibreglass reinforced PA.

Version:

Steel electro zinc-plated.

Note:

These door stops can be used to close doors or hatches mounted on aluminium profiles softly or magnetically.

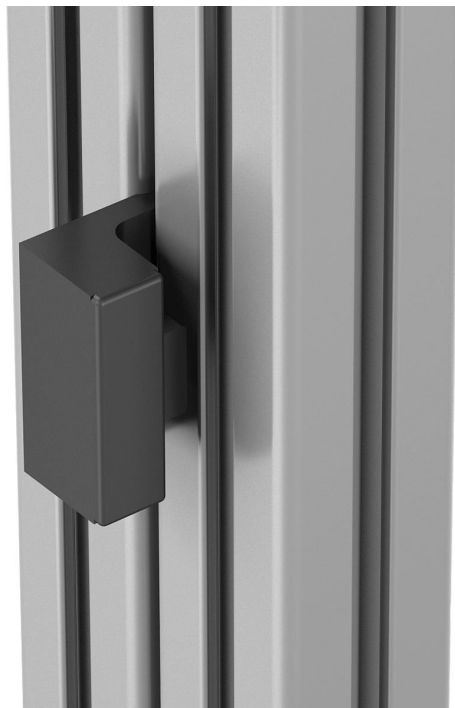
Supplied with:

Door stop with buffer:

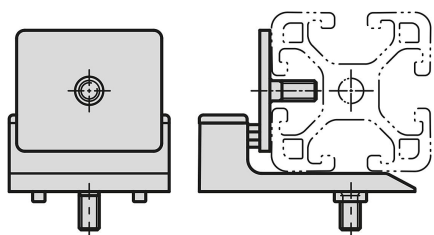
1x door stop,
1x slot key,
1x M5x14 ISO 7991 screw,
1x locking piece.

Door stop with magnetic catch:

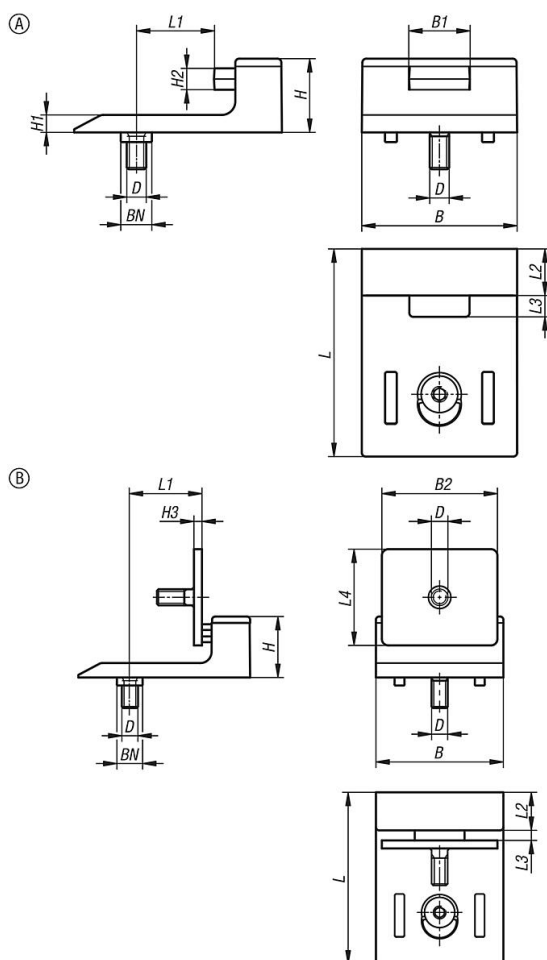
1x door stop,
1x retaining plate,
1x slot key,
2x M5x14 ISO 7991 screws,
1x locking piece.



Item description/product images



Drawings



Overview of items

Order No.	Version 1	Form	Component material	Surface finish component	B	B1	B2	D	H	H1	H2	H3	L	L1	L2	L3	L4	BN=Slot width	Shore grade
03075-12-0	with damping	A	EPDM	-	40	15	-	M5	19	4,5	5	-	53,5	20/22,5	12	5	-	8/10	-
03075-12-1	with magnetic catch	B	steel	galvanised	40	-	36	M5	19	4,5	-	2,5	53,5	20/22,5	12	3	30	8/10	70