



## Description

### Material:

Polyacetal (POM) or polyketone (PK).

### Version:

Injection moulded, straight teeth. Engagement angle 20°. Axis angle = 90°.

Machined bores from module 1.5.

Polyacetal, white.

Polyketone, ivory tone.

### Note:

Polyacetal: Standard material with high hardness grade and low coefficient of friction.

Polyketone: Material with significantly longer service life, higher power transmission and greater security against tooth breakage due to the extraordinarily high wear resistance and very good tribological properties.

Can be used under water and other media.

Injection moulded gear wheels may have internal manufacture-related cavities. These may become visible during drilling or broaching. They do not impair the function.

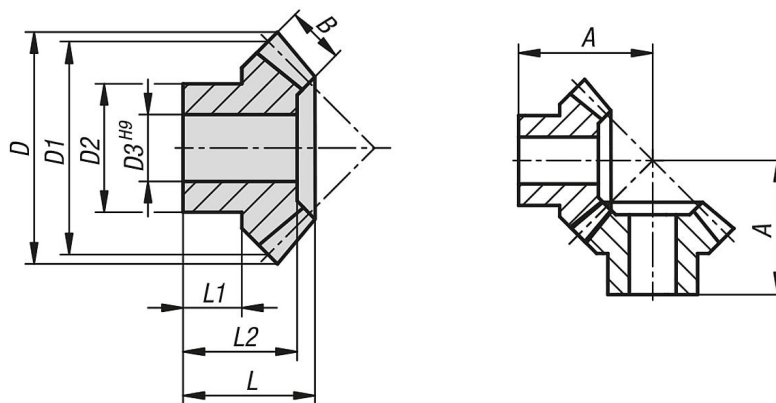
Bevel gear wheels are supplied as single components. To obtain a pair of bevel gear wheels, please order the specified mating gear as well.

### Temperature range:

-40 °C to +140 °C (taking amount and duration of load into account).

### Note:

The torques specified in the tables relate exclusively to the toothing. The shaft diameter, key size, etc. are not taken into account. The permissible load calculations are based on the basic principles of the pitting load capacity of the tooth flanks as well as the occurring tooth root stress. The respective permissible load of a gear wheel depends on so many different factors that the values specified can only be reference values meant to make selection easier. The torque specifications relate to a single tooth. The overlap, which is essential for determining the transmissible torque, occurs depending on the pitch diameter, gear wheel pairing, etc. In the simplest straight tooth cases, an overlap ratio of 1.1 to 1.25 is normal. To increase the overlap, a higher number of teeth with smaller modules is used. A good profile overlap can minimise damage such as pitting.



Overview of items

Order No.	Main material	Transmission ratio	Module	No. of teeth	A	B	D	D1	D2	D3	L	L1	L2	Max. torque Ncm	matching opposing gear
22432-105110016	polyacetal	1:1	0,5	16	10,5	2	8,7	8	7	3	8,1	6	8,1	1	22432-105110016
22432-110110016	polyacetal	1:1	1	16	18,4	4,7	17,6	16	12	5	13,6	8	13,6	9,4	22432-110110016
22432-110110030	polyacetal	1:1	1	30	25,1	7	31	30	15	6	15,4	7,6	13,3	26,3	22432-110110030
22432-115110016	polyacetal	1:1	1,5	16	25,8	7	26,4	24	18,5	8	18,4	10	16,2	31,6	22432-115110016
22432-120110016	polyacetal	1:1	2	16	30,4	10	34,9	32	21,9	10	21,2	9,7	18,3	80,4	22432-120110016
22432-125110016	polyacetal	1:1	2,5	16	37	12,3	43,5	40	25,2	12	25,5	11,5	22,9	154,5	22432-125110016
22432-130110016	polyacetal	1:1	3	16	43	13,8	52,3	48	28,8	14	29,2	13,2	25,7	249,7	22432-130110016
22432-135110016	polyacetal	1:1	3,5	16	49,5	15,8	61,4	56	33,3	18	33,1	14,6	28	389,1	22432-135110016
22432-205110016	polyketone	1:1	0,5	16	10,5	2	8,7	8	7	3	8,1	6	8,1	1	22432-205110016
22432-210110016	polyketone	1:1	1	16	18,4	4,7	17,6	16	12	5	13,6	8	13,6	9,9	22432-210110016
22432-210110030	polyketone	1:1	1	30	25,1	7	31	30	15	6	15,4	7,6	13,3	27,7	22432-210110030
22432-215110016	polyketone	1:1	1,5	16	25,8	7	26,4	24	18,5	8	18,4	10	16,2	33,2	22432-215110016
22432-220110016	polyketone	1:1	2	16	30,4	10	34,9	32	21,9	10	21,2	9,7	18,3	84,4	22432-220110016
22432-225110016	polyketone	1:1	2,5	16	37	12,3	43,5	40	25,2	12	25,5	11,5	22,9	162,3	22432-225110016
22432-230110016	polyketone	1:1	3	16	43	13,8	52,3	48	28,8	14	29,2	13,2	25,7	262,2	22432-230110016
22432-235110016	polyketone	1:1	3,5	16	49,5	15,8	61,4	56	33,3	18	33,1	14,6	28	408,6	22432-235110016