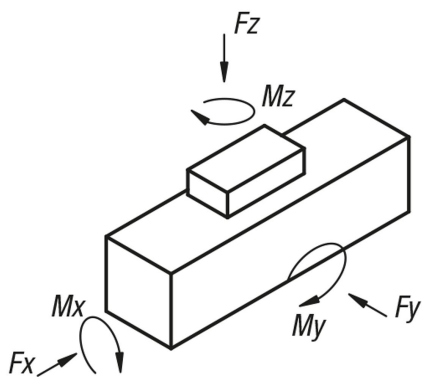


Item description/product images



Description

Material:

Body, extruded aluminium section.
 Bearing housing and slide, aluminium.
 Profile guide rail and guide carriage, steel.
 Toothed belt, polyurethane with steel cord reinforcement.

Version:

Body natural colour anodised
 Bearing housing and slide, black anodised.
 Tracks of the profile guide rail, inductively hardened and ground.

Note:

Compact and flexible linear actuators with toothed belt drive. The body consists of a self-supporting aluminium extruded section with integrated profile guide rail. This rail system is able to absorb highest forces from all directions, is low-wear, and is optimised for moving large masses.

Slots are located on the outer sides of the aluminium profile, ensuring easy, reliable assembly and enabling accessories mounted. Proximity switches can be positioned and fastened in the upper T-slot. The aluminium profile is fully compatible with our standard I series profiles.

The steel cord reinforced toothed belt enables high power transmission with alternating loads, and simultaneously ensures excellent positioning accuracy with low wear and very little noise generation. The toothed belt runs on the upper side of the aluminium profile in guide slots, thus protecting all parts housed within the profile from dirt.

With its symmetrical design, the linear actuator enables motors and transmissions to be attached to all four sides of the bearing housing. The open ends of the unused hollow shafts on the bearing housing can be sealed using the optional protective caps 20300.

An additional centring hole is located on each tapped hole on the upper side of the slide. Other connecting elements can be precisely mounted on the slide in combination with the centring rings 20240.

Load specifications apply for dynamic loading.

Technical data:

Safety rating IP50.

Temperature range:

-20 °C - +70 °C.

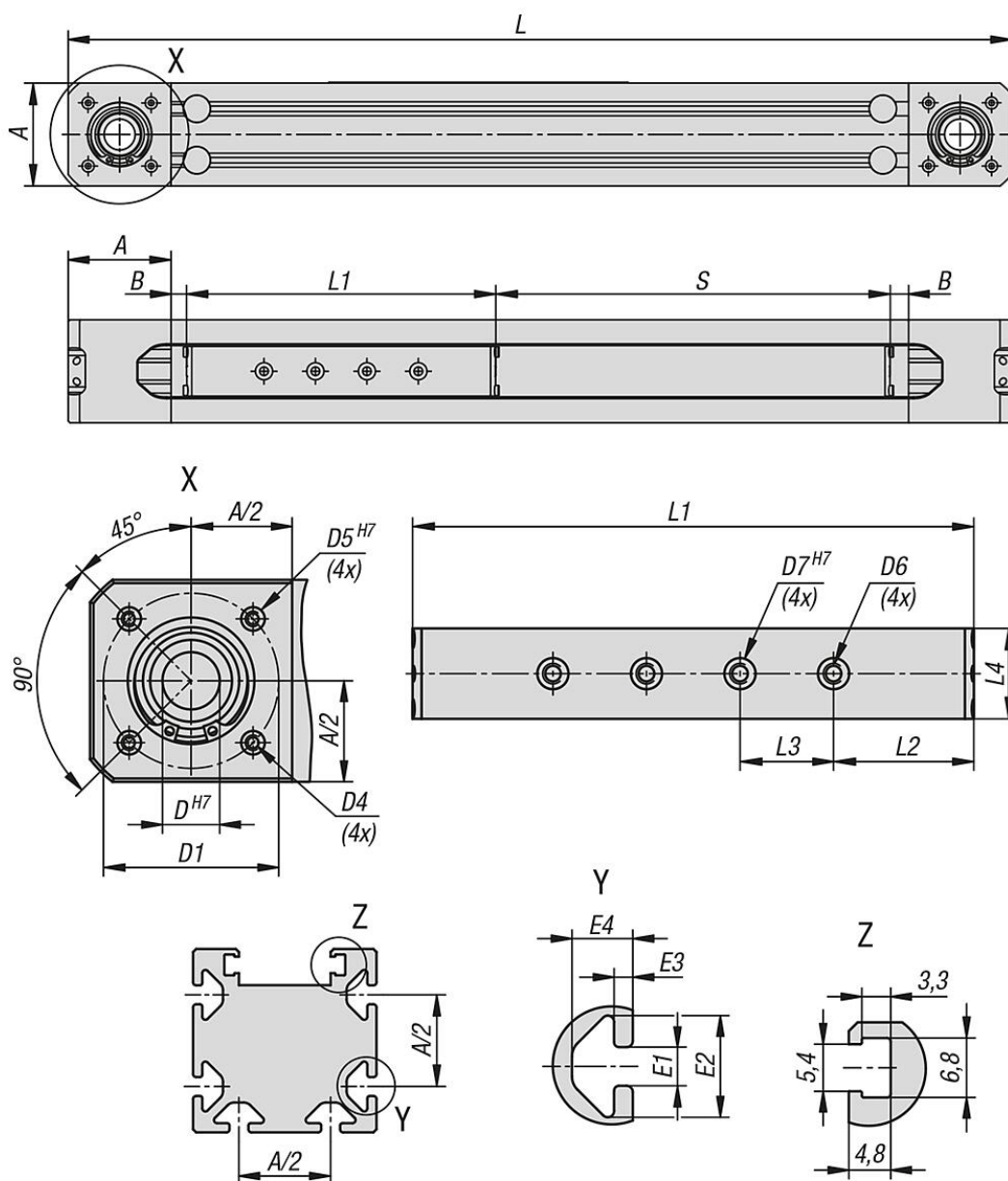
On request:

Other lengths (travel S max. 4000 mm).

Accessory:

Protective caps. Slot table, motor adapter set, synchronisation set and proximity switch, see table.

Drawings



Overview of items

Order No.	Size	Slot width	A	B	D	D1	D4	D5	D6	D7	E1	E2	E3	E4	L	L1	L2	L3	L4	Travel S
20300-1060X0200	60	6	60	25	17	52	M4	7	M6	10	6,2	16,3	3	9,75	550	180	45	30	29	200
20300-1060X0500	60	6	60	25	17	52	M4	7	M6	10	6,2	16,3	3	9,75	850	180	45	30	29	500
20300-1060X1000	60	6	60	25	17	52	M4	7	M6	10	6,2	16,3	3	9,75	1350	180	45	30	29	1000
20300-1060X1500	60	6	60	25	17	52	M4	7	M6	10	6,2	16,3	3	9,75	1850	180	45	30	29	1500
20300-1080X0300	80	8	80	30	24	76	M6	10	M8	13	8	20	4,5	12,25	760	240	60	40	45	300
20300-1080X0500	80	8	80	30	24	76	M6	10	M8	13	8	20	4,5	12,25	960	240	60	40	45	500
20300-1080X1000	80	8	80	30	24	76	M6	10	M8	13	8	20	4,5	12,25	1460	240	60	40	45	1000
20300-1080X1500	80	8	80	30	24	76	M6	10	M8	13	8	20	4,5	12,25	1960	240	60	40	45	1500

Order No.	Size	Repeat accuracy	Max. speed m/s	Max. acceleration m/sc	Weight of carriage kg	Weight Stroke 0 kg	Weight per 1000 mm stroke kg	Fx N	Fy dynamic N	Fz dynamic N
20300-1060X0200	60	±0,05	3	80	0,30	2,34	4,82	844	1384	1384
20300-1060X0500	60	±0,05	3	80	0,30	2,34	4,82	844	1384	1384

Overview of items

Order No.	Size	Repeat accuracy	Max. speed m/s	Max. acceleration m/sc	Weight of carriage kg	Weight Stroke 0 kg	Weight per 1000 mm stroke kg	Fx N	Fy dynamic N	Fz dynamic N
20300-1060X1000	60	±0,05	3	80	0,30	2,34	4,82	844	1384	1384
20300-1060X1500	60	±0,05	3	80	0,30	2,34	4,82	844	1384	1384
20300-1080X0300	80	±0,05	5	50	0,87	5,33	8,39	1572	3662	3662
20300-1080X0500	80	±0,05	5	50	0,87	5,33	8,39	1572	3662	3662
20300-1080X1000	80	±0,05	5	50	0,87	5,33	8,39	1572	3662	3662
20300-1080X1500	80	±0,05	5	50	0,87	5,33	8,39	1572	3662	3662

Order No.	Size	Mx dynamic Nm	My dynamic Nm	Mz dynamic Nm	Iy cm ⁴	Iz cm ⁴	Toothed belt type	Constant feed mm/rev	Idle torque Nm	Max. driving torque M Nm	Typical payload kg
20300-1060X0200	60	8	42	42	43,26	57,88	32AT5	101	0,3	14	15
20300-1060X0500	60	8	42	42	43,26	57,88	32AT5	101	0,3	14	15
20300-1060X1000	60	8	42	42	43,26	57,88	32AT5	101	0,3	14	15
20300-1060X1500	60	8	42	42	43,26	57,88	32AT5	101	0,3	14	15
20300-1080X0300	80	27	146	146	127,09	184,78	50AT5	146	0,7	38	50
20300-1080X0500	80	27	146	146	127,09	184,78	50AT5	146	0,7	38	50
20300-1080X1000	80	27	146	146	127,09	184,78	50AT5	146	0,7	38	50
20300-1080X1500	80	27	146	146	127,09	184,78	50AT5	146	0,7	38	50