

## Item description/product images



## Description

**Material:**

Housing brass.

Magnetic core NdFeB (neodymium).

**Version:**

Housing smooth.

**Note:**

Smooth version, shielded system.

Under no circumstances may Neodym magnets be pressed directly into iron, as otherwise loss of attractive force occurs as a result of magnetic short circuits

Diameter "D" ground to tolerance h6.

**Temperature range:**

max. 80°C.

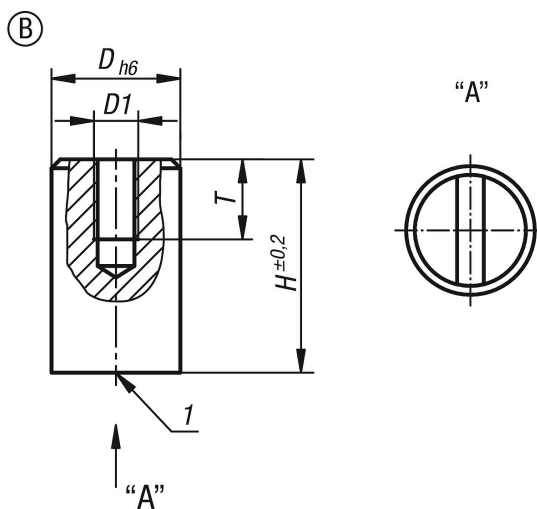
**Assembly:**

The magnets can be mounted by press-fit, screwing-in or gluing.

**Drawing reference:**

1) magnetic face

## Drawings



## Overview of items

Order No.	Form	D	D1	H	T	Magnetic force N	Distance to iron wall mm
09067-10-206	B	6	M3	20	5	10	1,5
09067-10-208	B	8	M3	20	5	25	1,5
09067-10-210	B	10	M4	20	7	45	2
09067-10-213	B	13	M4	20	7	70	2,5
09067-10-216	B	16	M4	25	8	150	3
09067-10-220	B	20	M6	25	6	280	4
09067-10-225	B	25	M6	35	8	450	5
09067-10-232	B	32	M6	40	6	700	6

