

Item description/product images



Description

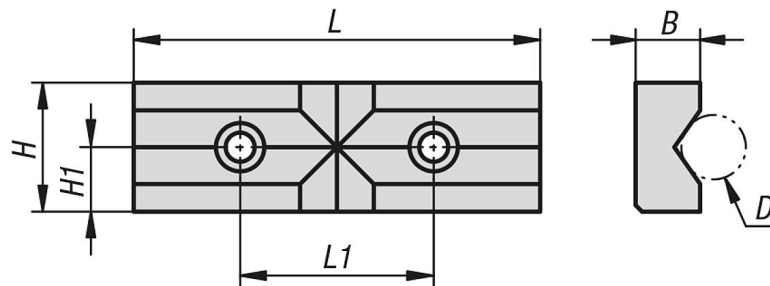
Material:
Steel.

Version:
Hardened.

Note:
Prism jaws are used for clamping round material, tubes, rods, profiles, etc. Prism incorporated in horizontal and vertical direction.
The prism jaws are screwed onto the attachment base jaws.

Suitable for: 41101 and 41102

Drawings



Overview of items

Order No.	B	D	H	H1	L	L1
41184-065	12,5	5-25	20	10	66	34
41184-080	12,5	5-25	25	12,5	81	38
41184-125	20	8-38	40	20	126	60