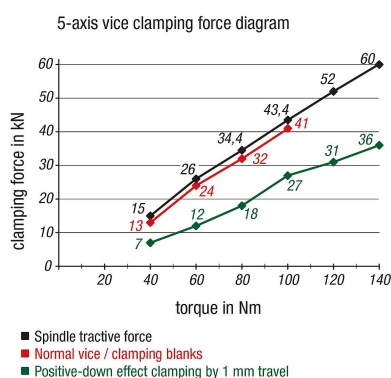


Item description/product images



Description

Product description:

The 5-axis vice features excellent stability and flexibility, and is extremely easy to use. The 5-axis vice can be used as a positive-down force vice or normal vice. When the positive down force function is used, the workpiece can be held with a repeat accuracy of ± 0.01 mm. A workpiece clamping height of 155/180 mm enables easy access during machining. The clamping width is preset using the crank handle, cutting down on setup times. Additionally, the closed geometries and the resistance to dirt that they provide keep maintenance and repair times to a minimum.

Material:

Steel.

Version:

Baseplate and workpiece support hardened.

Note:

Additional product information can be found in the operating instructions.

Type of operation:

Quick adjustment using crank handle.

Advantages:

For use as centric-clamping device with positive down force function or vice. Straightforward, infinite clamping width adjustment using crank handle. Optimum clamping height for 5-axis machining. Flexible options for connection to machine tables.

On request:

Various spare parts, larger clamping widths.

Supplied with:

Depending on the baseplate length, see operating instructions.

Accessory:

Baseplates 41405
 Jaw plates with pins 41410
 Combination jaw plates, smooth/with pins 41410
 Jaw plates, machinable 41320
 Seating ledges 41345
 Extension shafts 41355
 Cylinder clamping set 41350
 Stop set 41370
 Clamping pin 42208-140250516, 42208-240250516
 Clamping claw sets 41375
 Slot nuts 03240-1814x20
 Fitted bolts 07533-12065
 Socket head screws 07160-12X60
 Torque wrench 96662-01-01

Applications:

Suitable for T-slot and grid hole tables and zero-point clamping systems. Size 282.84mm for diagonal alignment on zero-point clamping systems with gauge 52/96/200mm.

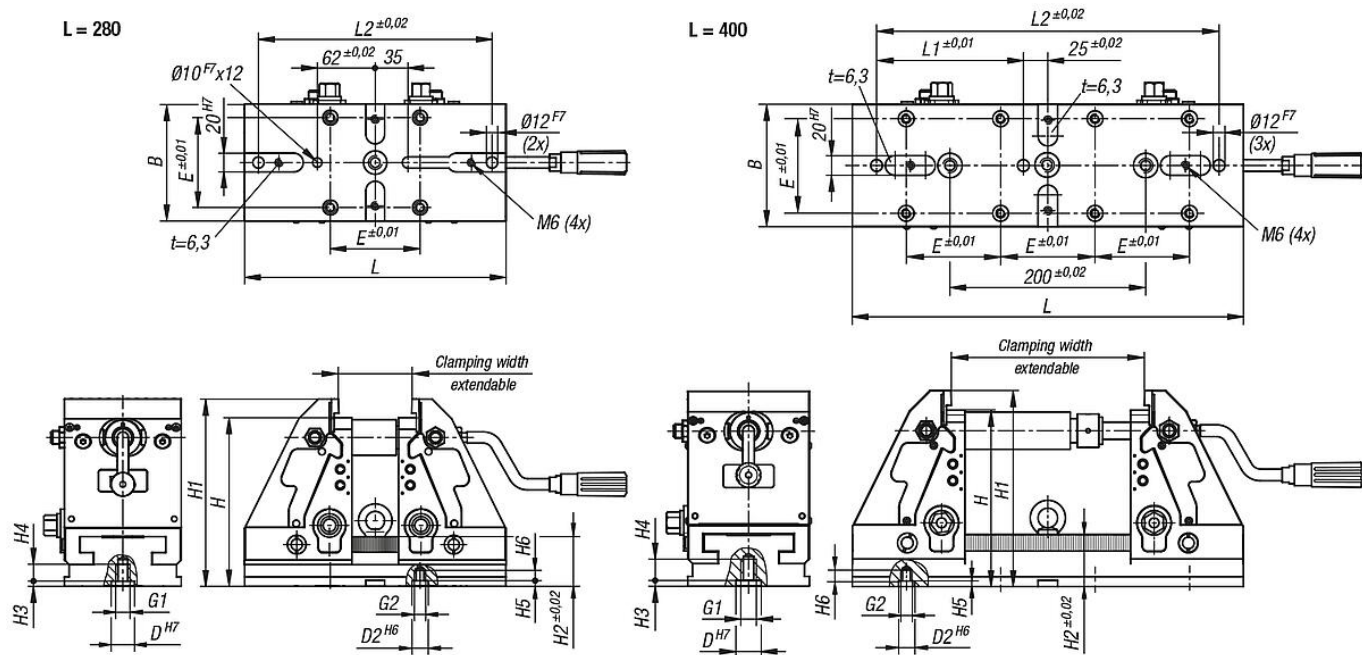
Tolerances:

Item description/product images



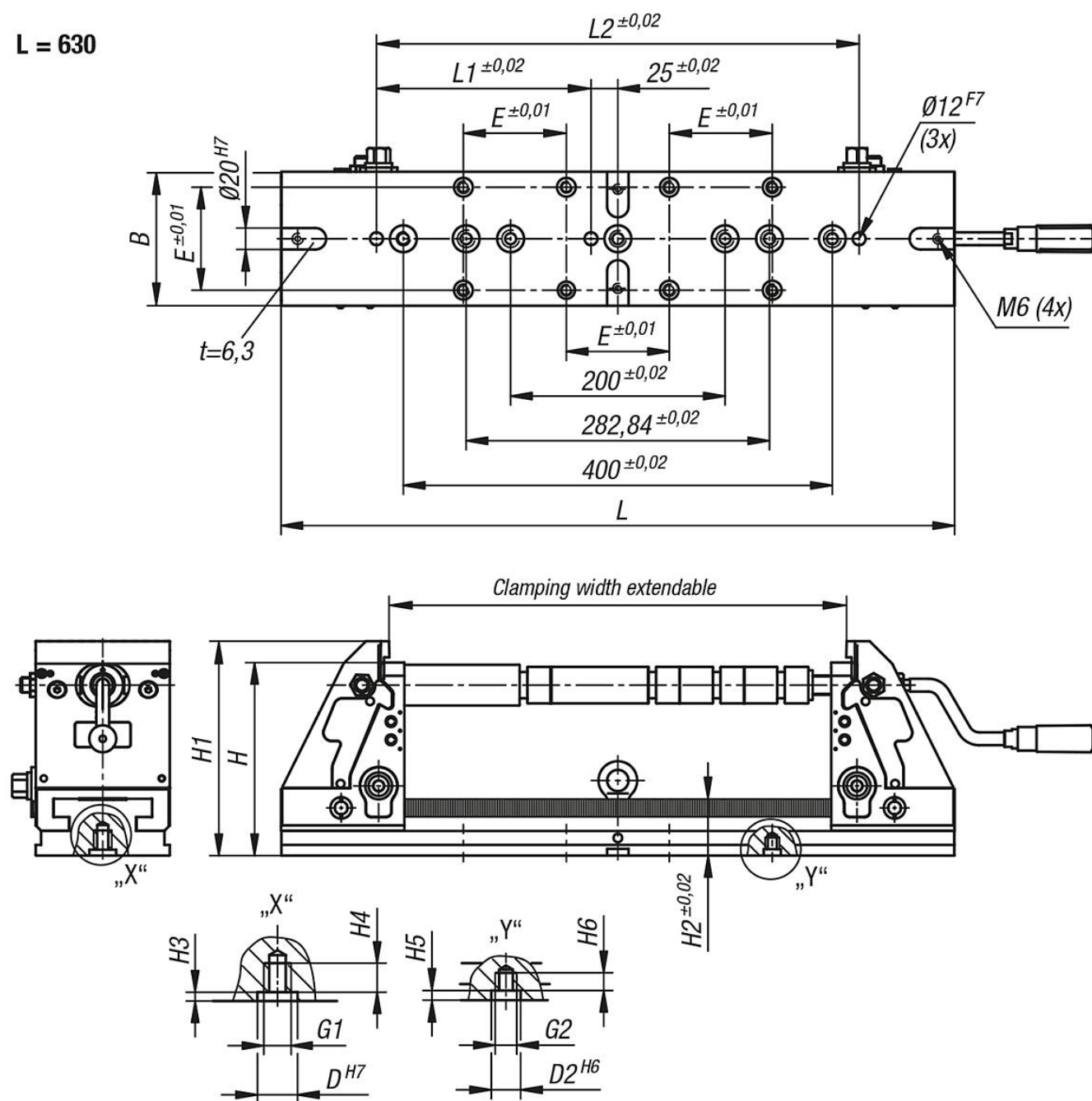
With a clamping depth of > 5 mm, the repeat accuracy while the positive down force function is being used is ± 0.01 .

Drawings



Drawings

L = 630



Overview of items

Order No.	B	L	H	L1	L2	H1	H2	H3	H4	H5	H6	D	D2	E	G1	G2	Clamping width extendable	Tractive force max. kN
41400-122800901550	90	280	155	-	250	175	53	5,5	18	6	11	25H7	12H6	52	M12	M8	28-180	see diagram
41400-124000901550	90	400	155	150	350	175	53	5,5	18	6	11	25H7	12H6	52	M12	M8	28-300	see diagram
41400-122801251800	125	280	180	-	250	200	53	5,5	18	6	11	25H7	16H6	96	M12	M10	28-180	see diagram
41400-124001251800	125	400	180	150	350	200	53	5,5	18	6	11	25H7	16H6	96	M12	M10	28-300	see diagram
41400-126301251800	125	630	180	200	450	200	53	5,5	18	6	11	25H7	16H6	96	M12	M10	28-528	see diagram

