

Item description/product images

**Description****Material:**

Polyamide PA6.

Version:

black.

Note:

Connecting elements with tension relief for holding and securing energy chains or a corrugated pipes.

Connecting elements are used where energy chains/corrugated pipes need to be held in place to prevent twisting.

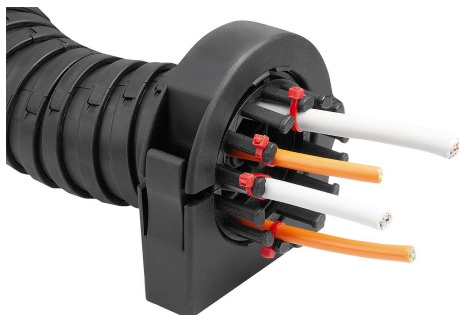
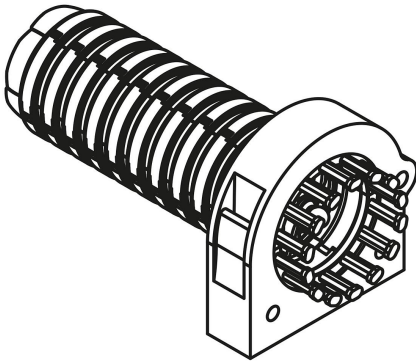
The connection elements are equipped with tension relief teeth. The lines can be secured to the teeth using cable ties.

Temperature range:

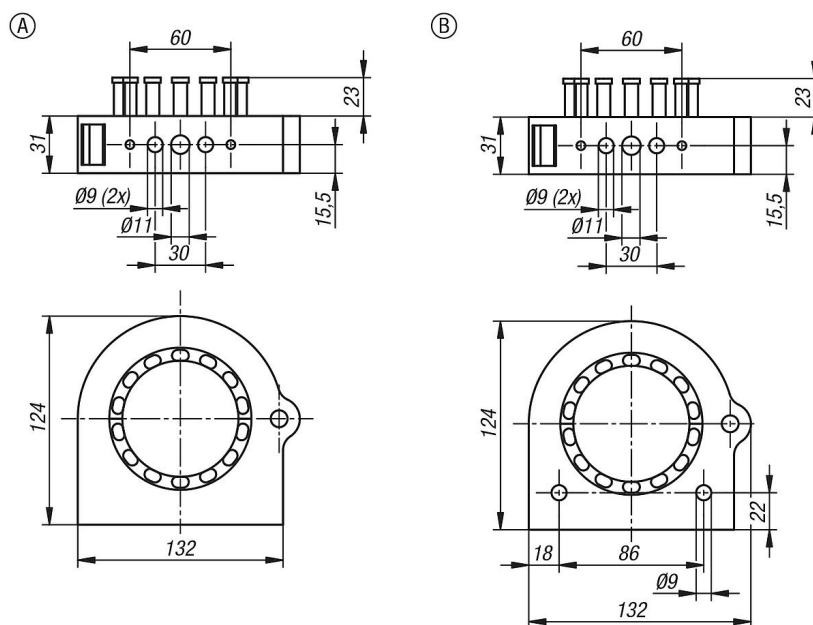
-45 °C to +105 °C (briefly up to +150 °C).

Assembly:

The connection elements can be opened and closed tool-free via a plastic latch. The inner jaws with tension relief teeth consist of two identical half-shells that are mounted on the energy chain via hole-pin connections. The jaws fitted around the energy chain are inserted into the connection element and enable the energy chain to be held securely by means of the internal profiling.



Drawings



Overview of items

Order No.	Form	Form definition	Nominal size
80855-05-07011	A	standard	70
80855-05-07021	B	front fastening	70