

Item description/product images



Description

Material:

Steel.

Version:

Body tempered and black oxidised.

Locking washer case-hardened and brass-plated.

Note:

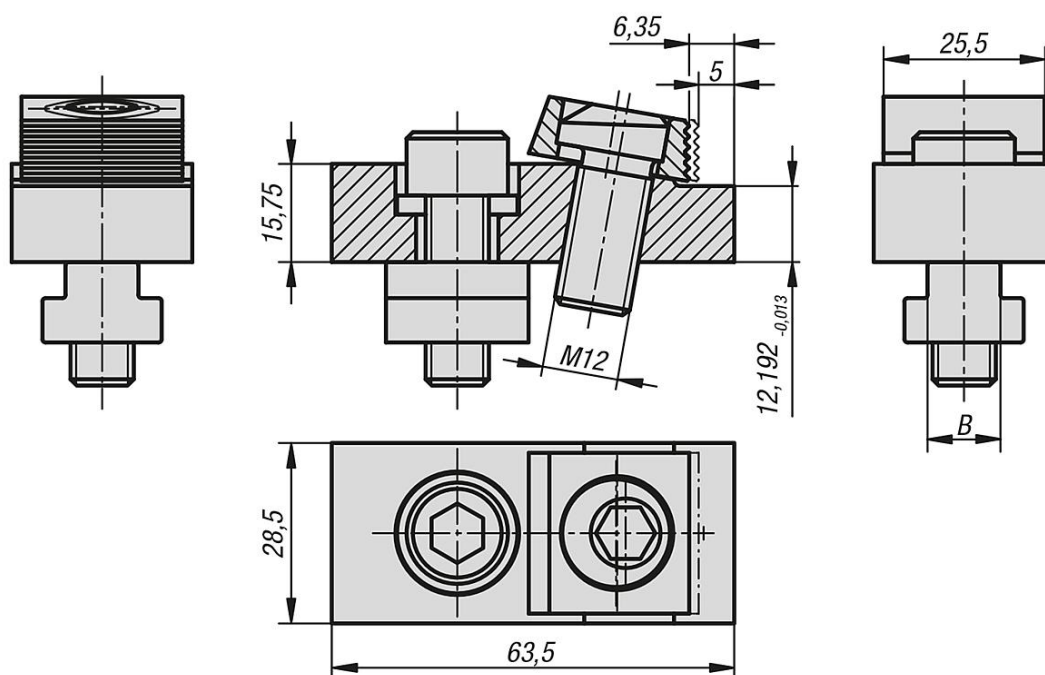
Also called riser clamps.

These cam clamps with riser can be used directly on machine tables. A positive down force is exerted during clamping.

On request:

Replacement cam screws.

Drawings



Overview of items

Order No.	B Slot width	Clamping force kN	Accessories NLM
04437-12	12	12	-
04437-14	14	12	04521-10-1216
04437-16	16	12	04521-10-1216
04437-18	18	12	04521-10-1216

