

Item description/product images



Description

Material:

Oval aluminium EN AW-6060

Version:

Black or ruby red RAL 3003, powder-coated.

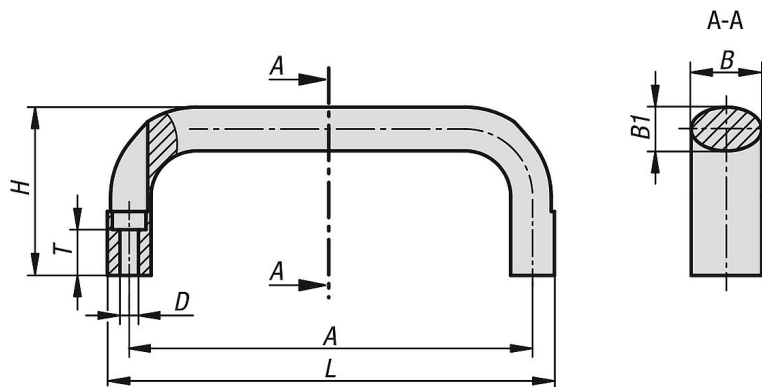
Assembly:

From the front.

Accessory:

Use ISO 4762-M5/M6 cap screws for mounting the handles.

Drawings



Overview of items

Order No.	Main colour	A	B	B1	D	H	L	T	Load capacity N
06920-11000105	black	100	21	13	5,5	50	113	13,6	1000
06920-11120105	black	112	21	13	5,5	50	125	13,6	1000
06920-11120106	black	112	25	17	6,6	55	129	11	1000
06920-11200105	black	120	21	13	5,5	50	133	13,6	1000
06920-11200106	black	120	25	17	6,6	55	137	11	1000
06920-11280105	black	128	21	13	5,5	50	141	13,6	1000
06920-11280106	black	128	25	17	6,6	55	145	11	1000
06920-11600105	black	160	21	13	5,5	50	173	13,6	1000
06920-11600106	black	160	25	17	6,6	55	177	11	1000
06920-11800106	black	180	25	17	6,6	55	197	11	1000
06920-11002705	ruby red RAL3003	100	21	13	5,5	50	113	13,6	1000
06920-11122705	ruby red RAL3003	112	21	13	5,5	50	125	13,6	1000
06920-11122706	ruby red RAL3003	112	25	17	6,6	55	129	11	1000
06920-11202705	ruby red RAL3003	120	21	13	5,5	50	133	13,6	1000
06920-11202706	ruby red RAL3003	120	25	17	6,6	55	137	11	1000
06920-11282705	ruby red RAL3003	128	21	13	5,5	50	141	13,6	1000
06920-11282706	ruby red RAL3003	128	25	17	6,6	55	145	11	1000
06920-11602705	ruby red RAL3003	160	21	13	5,5	50	173	13,6	1000
06920-11602706	ruby red RAL3003	160	25	17	6,6	55	177	11	1000
06920-11802706	ruby red RAL3003	180	25	17	6,6	55	197	11	1000

