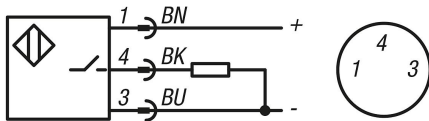
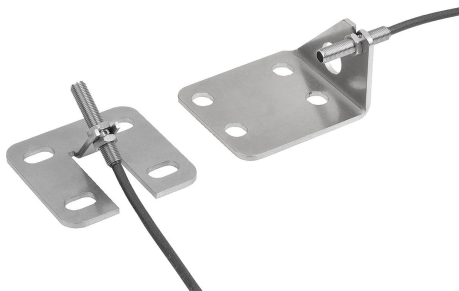


## Item description/product images



## Description

**Product description:**

Status sensors with brackets are used to monitor the actuated status of toggle clamps. The sensor detects whether the toggle clamp is open or closed and enables this status information to be processed electronically. The sensor is attached to the toggle clamp via the bracket.

**Material:**

Stainless steel

**Version:**

Bright.

**Note:**

The status sensor and brackets are supplied unassembled.

**Technical data:**

Inductive sensor:

Output circuit: PNP NO

Operating voltage: 10 - 30 V DC

Operating current: 100 mA

Contact gap: 0.8 mm

Switch frequency: 5000 Hz

Short-circuit proof: yes

Reverse polarity protection: yes

Rating: IP 67

Connection type: 0.3 m cable, PUR with plug

Temperature range: -25 °C - +70 °C

Approvals: CE, c UL us, EAC

**Assembly:**

The status sensor is fastened to the bracket with the nuts and set to dimension L1. The bracket is attached with the toggle clamp screws through holes between the foot and the mounting surface.

The switch point fine-tuning is carried out once the toggle clamp is mounted. The detailed procedure is described in the assembly instructions.

**Accessory:**

05900

05908

10451

80140

**Safety:**

Status sensors are not suitable for protecting people.

**Drawing reference:**

1) LED-indicator

BN = brown

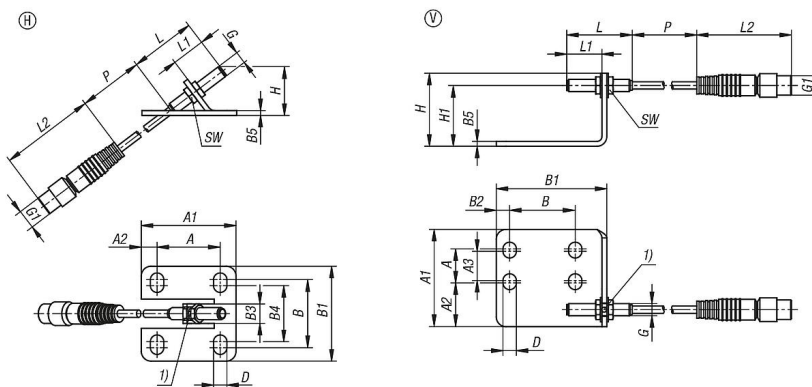
BK = black

BU = blue

Item description/product images



Drawings



Overview of items

Order No.	Form	Form definition	Dimensions																	matching toggle clamp	M=Spindle toggle clamp			
			A	A1	A2	A3	B	B1	B2	B3	B4	B5	D	G	G1	H	H1	L	L1			L2	P	SW
05990-20-06111	H	for horizontal toggle clamps	26	39	6,5	-	28	39	-	8	23	2	5,5	M5X0,5	M8x1	20,1	-	27	13,8	39	300	7	05900	M6x35
05990-20-08111	H	for horizontal toggle clamps	26	44	9	-	31	45	-	8	24	2	6,2	M5X0,5	M8x1	27,3	-	27	20,6	39	300	7	05900	M8x45
05990-20-06121	V	for vertical toggle clamps	14	40	18	12	27	45,5	5,5	-	-	2	5,5	M5X0,5	M8x1	30	25	27	14,5	39	300	7	05908	M6x35
05990-20-08121	V	for vertical toggle clamps	21	45	15	19	32	49	6,5	-	-	2	6,8	M5X0,5	M8x1	30	25	27	14,5	39	300	7	05908	M8x45