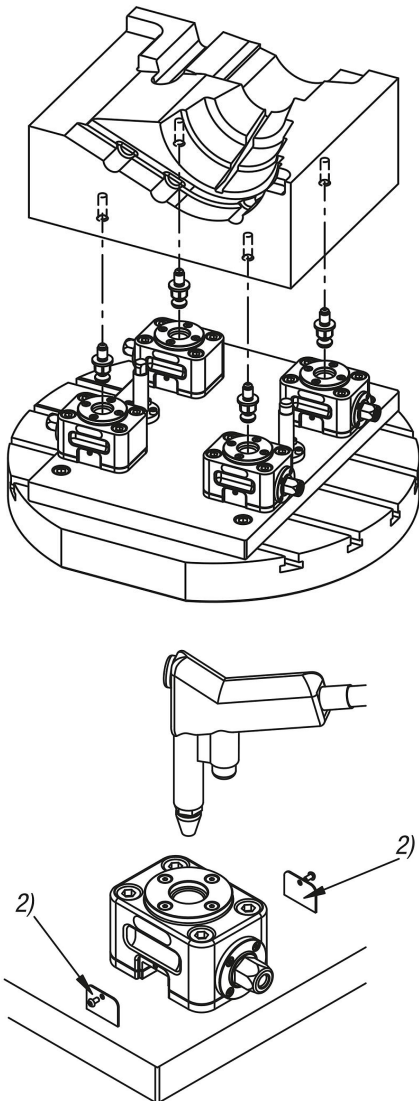


Item description/product images

**Description****Material:**

Carbon steel.

Version:

Body black oxidised.

Contact face tempered and ground.

Note:

The repeat accuracy is ± 0.3 mm.

To remove swarf and dust, remove the two cover caps (2) and blow them out with compressed air from above.

With automated operation, e.g. using impact drivers with adjustable torque, no more than 50% of the specified maximum tightening torque or clamping force may be used for loosening and tightening.

Type of operation:

Actuated using an impact driver with adjustable torque or manually using a clamping key.

With automated operation, e.g. using impact drivers with adjustable torque, no more than 50% of the specified maximum tightening torque or clamping force may be used for loosening and tightening.

Advantages:

Automation-compatible

High clamping forces

Rapid clamping

Supplied with:

Including positioning bush.

Accessory:

04401-05 Clamping screw for automation capable pull clamps

04401-20 Extension unit.

Drawing reference:

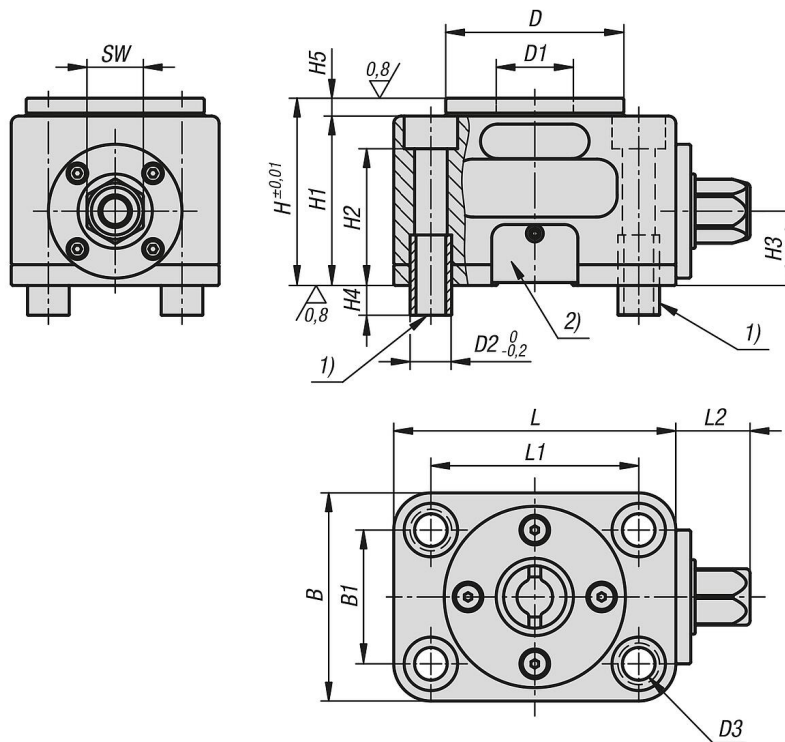
1) Positioning bushes

2) cover cap

Item description/product images



Drawings



Overview of items

Order No.	B	B1	D	D1	D2	D3 for screw to DIN 912	H	H1	H2	H3	H4	H5	L	L1	L2	SW	Tightening torque max. Nm	Clamping force kN
04401-12070095	70	45	60	26	14	M10	63	57	46	25	10	6	95	70	25	19	40	12

