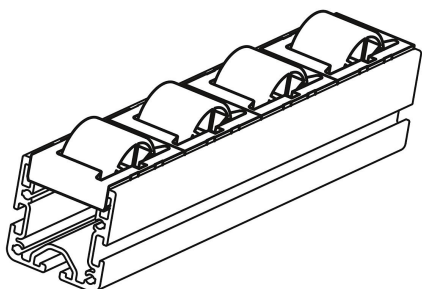
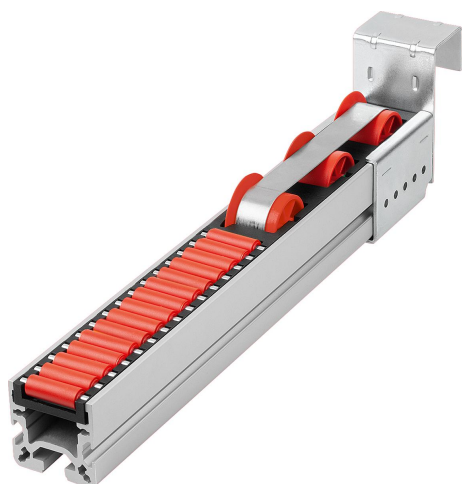


## Item description/product images



## Description

**Material:**

Roller and cage polyamide, glass-bead reinforced.  
Steel axis.

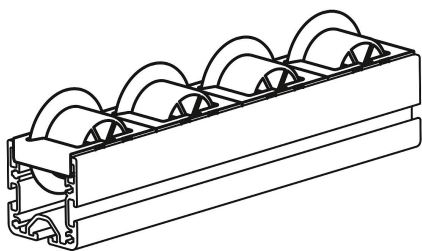
**Version:**

Cage black.  
Roller available in different colours.

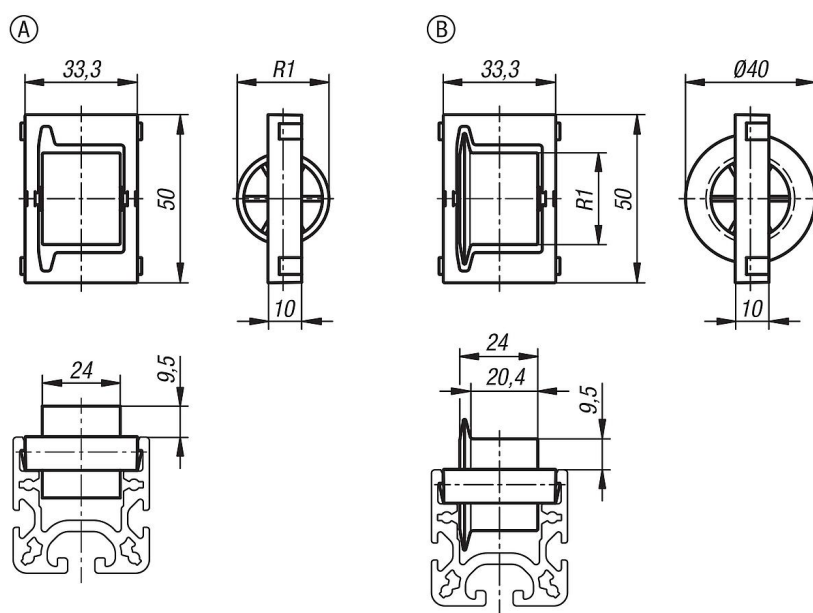
**Note:**

The roller elements are matched to the aluminium profiles for roller rails and can be mounted on them quickly and easily. No tools required. Suitable for aluminium profiles Type B and I.

## Item description/product images



## Drawings



## Overview of items

Order No.	Form	Version 2	Main colour	R1	Load capacity N
10448-1281	A	Magnetic Strip Roll	90x90	28	150
10448-1282	A	Magnetic Strip Roll	Drive	28	150
10448-1283	A	Magnetic Strip Roll	bright (black)	28	150
10448-1284	A	Magnetic Strip Roll	bright	28	150
10448-1285	A	Magnetic Strip Roll	Carrier Nut	28	150
10448-2281	B	Magnetic support Ø 6 mm, holding force 5N	90x90	28	150
10448-2282	B	Magnetic support Ø 6 mm, holding force 5N	Drive	28	150
10448-2283	B	Magnetic support Ø 6 mm, holding force 5N	bright (black)	28	150
10448-2284	B	Magnetic support Ø 6 mm, holding force 5N	bright	28	150
10448-2285	B	Magnetic support Ø 6 mm, holding force 5N	Carrier Nut	28	150