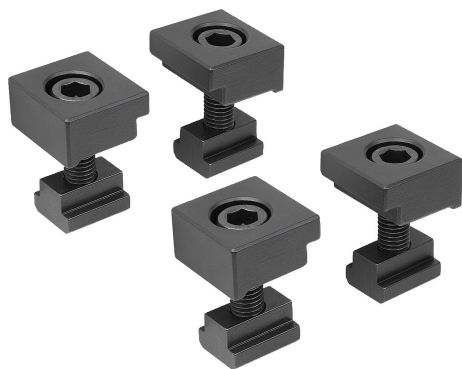


Item description/product images



Description

Material:

Carbon steel.

Version:

Tempered. Support faces ground (HRC 32).

Note:

Using these clamping claw sets, the clamping rails can be secured at any position on the machine table.

Application:

The clamping claw set is inserted into the T-slot on the machine table and slid along to the desired position on the clamping rail. Tightened using a cap screw.

Advantages:

The clamping claw set can also be used for other types of mounting in the multi-clamping system.

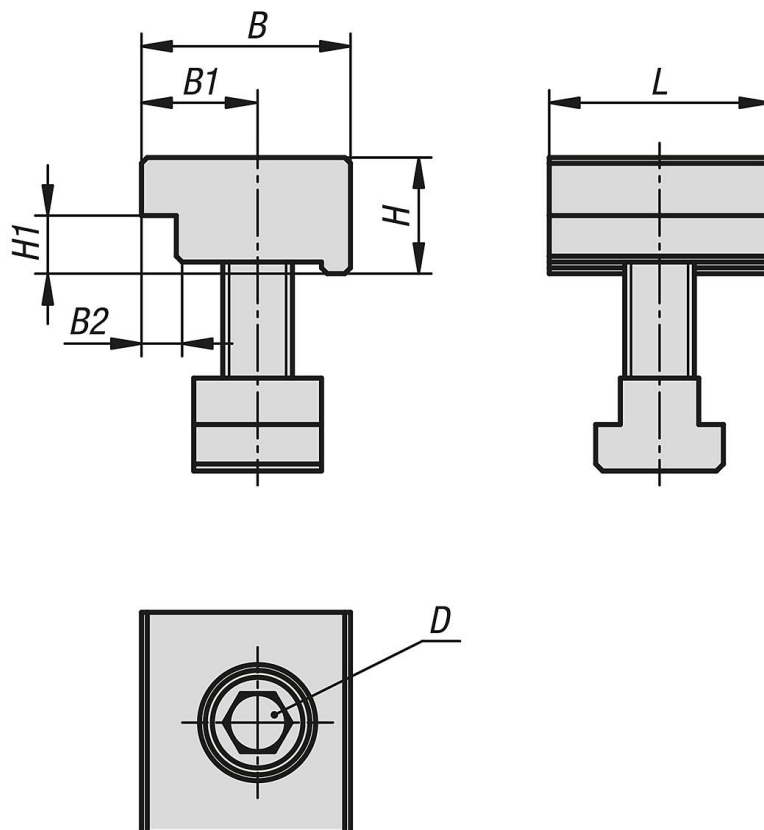
Supplied with:

4x clamping claws.

4x DIN 912 cap screws.

4x DIN 508 T-slot nuts.

Drawings



Overview of items

Order No.	suitable for system width	L	B	H	B1	B2	H1	D for screw DIN 912	Slot width
41505-15-05012	50	38	36	20	20	6	10	M12	14
41505-15-07216	72/100	40	50	28	27	8	14	M16	18