

Item description/product images



Description

Material:
Aluminium.

Version:
anodised.

Note:
hinge halves for panel elements and aluminium profiles.
Hinge halves can be individually combined.
360° rotation.

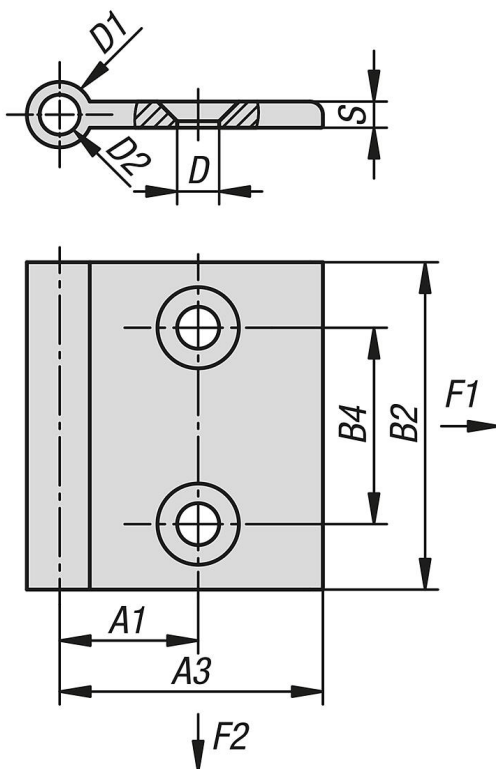
Fastened using DIN 7991 / ISO 10642 countersunk screws.

The loading values given for the hinges are non-binding reference values without consideration of safety factors and exclude any liability. The values given are for information purposes only and do not constitute a legally binding assurance of properties.

These load values were determined under laboratory conditions. Each user must determine individually whether the hinge is suitable for the respective application. Different materials onto which the hinges are installed and the type of mounting, weather conditions and wear can influence the determined values.

Accessory:
Pin 27869-15.
End cap 27869-20.

Drawings



Overview of items

Order No.	A1	A3	B2	B4	D	D1	D2	S	No. of holes	F1 N	F2 N
27869-05-22502	14,5	22	50	30	5,3	10	6,1	4	2	100	150
27869-05-28502	17,5	28	50	30	6,4	10	6,1	4	2	100	150
27869-05-32502	19,5	32	50	30	6,4	10	6,1	4	2	100	150
27869-05-40502	21,1	40,1	50	30	6,4	10	6,1	4	2	100	150
27869-05-42502	25	42	50	30	6,4	10	6,1	4	2	100	150
27869-05-47502	27	47	50	30	6,4	10	6,1	4	2	100	150
27869-05-52502	29,5	52	50	30	6,4	10	6,1	4	2	100	150
27869-05-62502	34,5	62	50	30	6,4	10	6,1	4	2	100	150