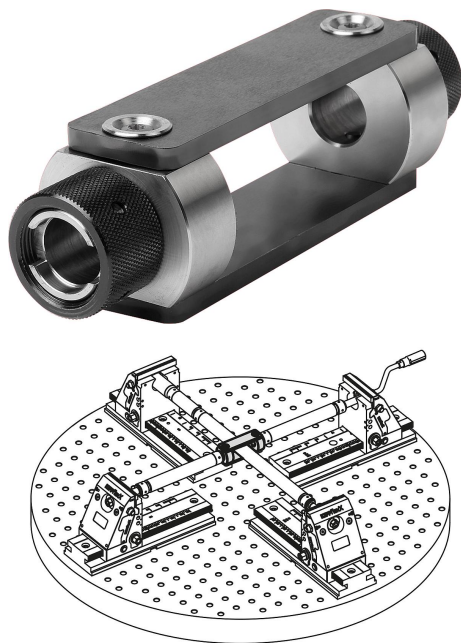


Item description/product images



Description

Material:

Carbon steel.

Version:

Black oxidised.

Note:

With the coupling for cross-clamping, two 5-axis clamping systems compact / KIPPFlexX can be connected with each other.

This enables workpieces to be clamped from four sides.

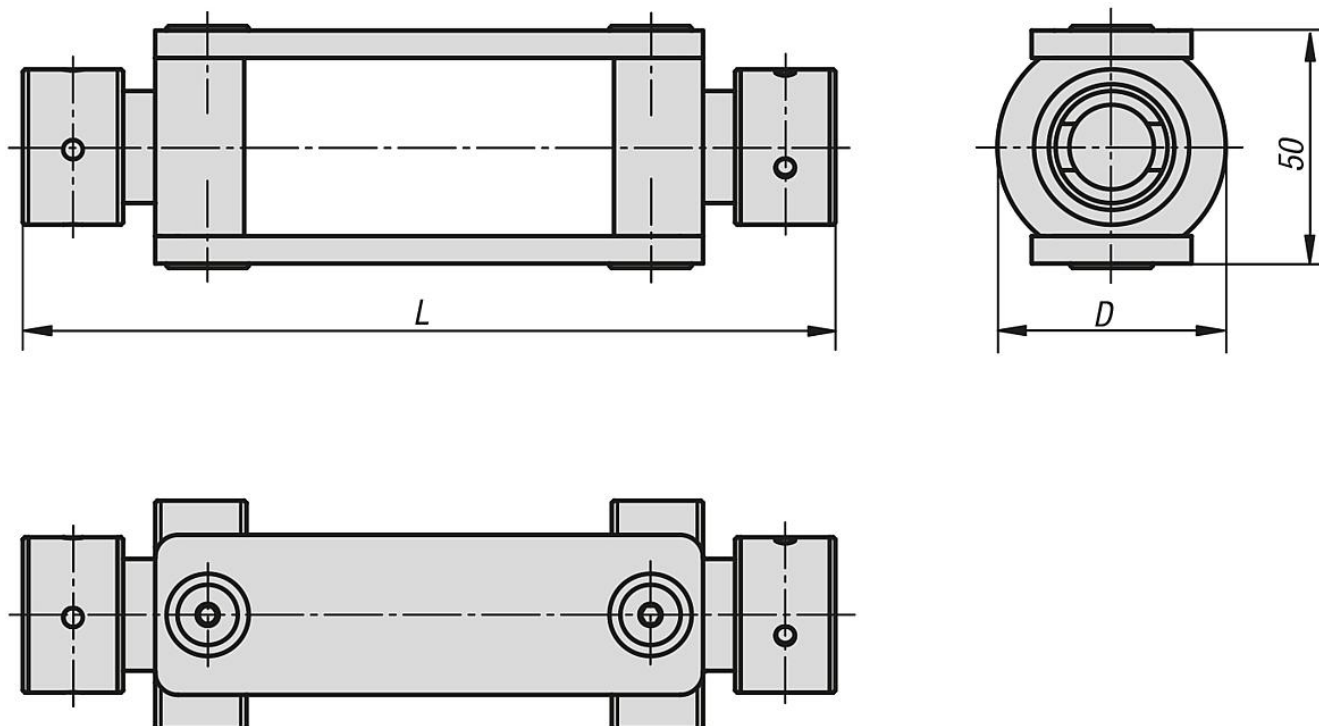
To enable the coupling for cross-clamping to be precisely centred on the transverse spindle, a threaded spindle and a spindle nut is required for each end.

These items must be ordered separately as accessories under the following numbers:

Threaded spindle NLM 41400-999.008

Spindle nut NLM 41010-999.003

Drawings



Overview of items

Couplings for cross-clamping

Order No.	D	L
41365-178	50	178

