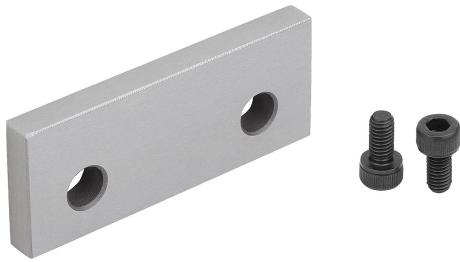


Item description/product images



Description

Material:

Tool steel.

Version:

Hardened and ground (HRC 55 ±2).

Note:

The seating ledges allow different workpiece clamping depths to be set.

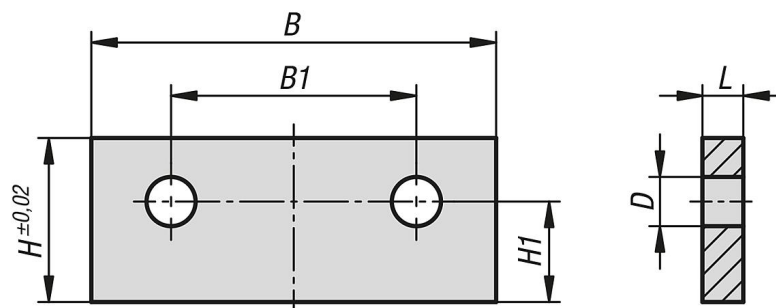
Application:

The seating ledges can be screwed together with the ES and DS fixed jaws and with the wedge clamps.

Advantages:

Quick setup of workpieces on the multiple clamping system. Uniform clamping depth of the workpieces with the ground support surface height.

Drawings



Overview of items

| Order No. | suitable for system width | L | B | H | B1 | H1 | D |
|--------------|---------------------------|---|------|----|----|------|---|
| 41505-050175 | 50 | 5 | 49,5 | 17 | 30 | 12,3 | 6 |
| 41505-050205 | 50 | 5 | 49,5 | 20 | 30 | 12,3 | 6 |
| 41505-050223 | 50 | 3 | 49,5 | 22 | 30 | 12,3 | 6 |