

## Item description/product images



## Description

**Material:**

Steel.

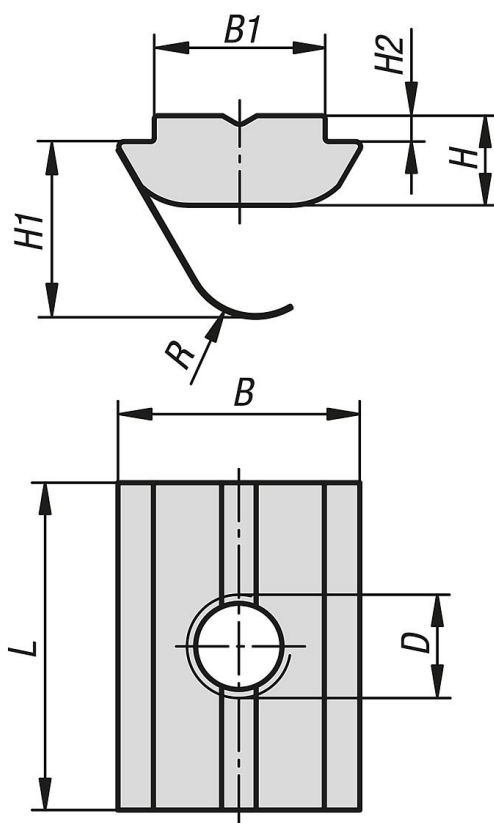
**Version:**

Electro zinc-plated.

**Note:**

The slot nut is twisted into the profile slot and so can be subsequently inserted into existing systems. The spring allows the nut to be fixated anywhere in the profile slot.

## Drawings



## Overview of items

Order No.	Slot width	B	B1	D	H	H1	H2	L	R
07078-0804	8	11,6	7,9	M4	4,6	8,8	1	16	3
07078-0805	8	11,6	7,9	M5	4,6	8,8	1	16	3
07078-0806	8	11,6	7,9	M6	4,6	8,8	1	16	3
07078-0808	8	11,6	7,9	M8	4,6	8,8	1	16	3
07078-1004	10	14	9,9	M4	5,2	10,2	1,5	19	4
07078-1005	10	14	9,9	M5	5,2	10,2	1,5	19	4
07078-1006	10	14	9,9	M6	5,2	10,2	1,5	19	4
07078-1008	10	14	9,9	M8	5,2	10,2	1,5	19	4

