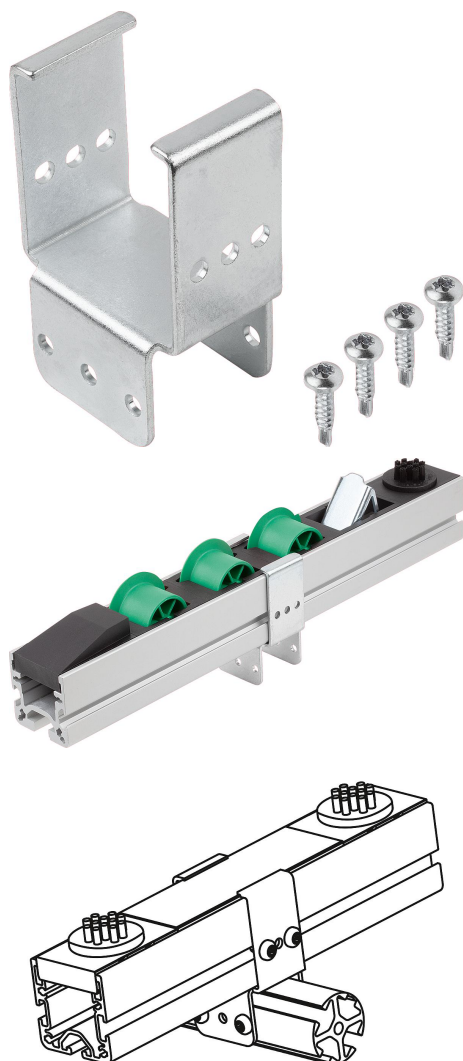


## Item description/product images



## Description

**Material:**

Steel.

**Version:**

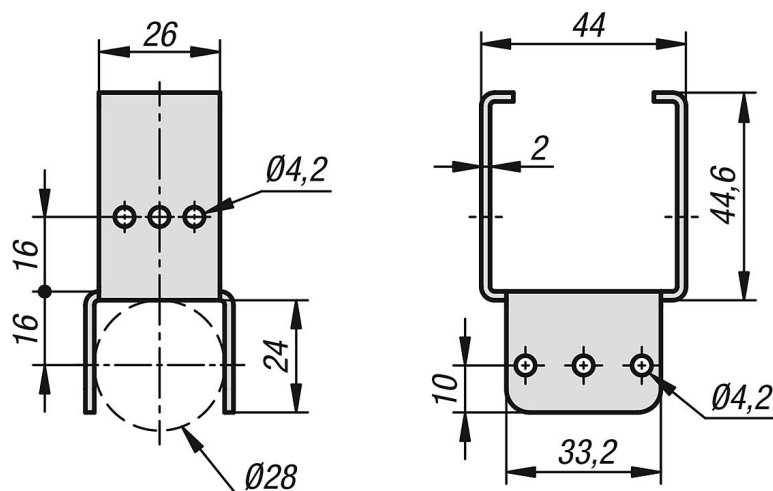
Electro zinc-plated.

**Note:**

The mounting bracket is used to mount roller rails and round tubes crosswise. They are also used to hang and support the profiles.

A fastening set is supplied.

## Drawings



## Overview of items

Order No.	Item
10448-52-4428	Mounting bracket