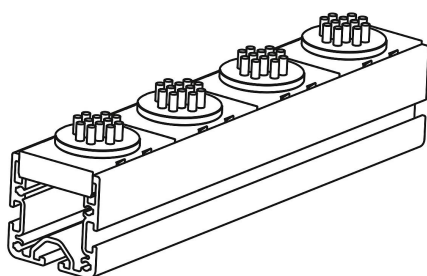
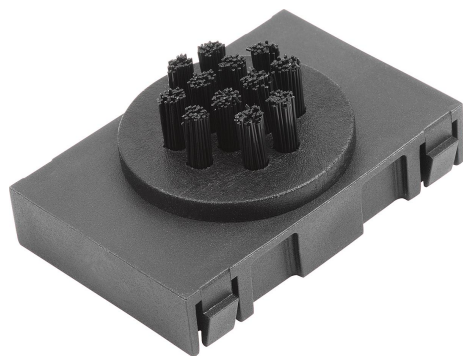


## Item description/product images



## Description

**Material:**

Polyamide fibres.

Polypropylene brush head.

Polyamide cage, carbon-fibre reinforced.

**Version:**

black.

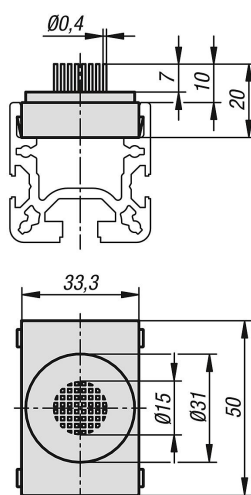
**Note:**

The brush element is matched to the aluminium profiles for roller rails and can be mounted on them quickly and easily.

With the elastic brush fibres, scratch-sensitive objects can be moved flexibly in two dimensions.

No tools required. Suitable for aluminium profiles Type B and I.

## Drawings



## Overview of items

| Order No.   | Load capacity<br>N |
|-------------|--------------------|
| 10448-04-15 | 100                |

