

Item description/product images

**Description****Material:**

Body and jaws steel.

Bodies over Ø100 aluminium, jaws steel.

Version:

Steel bodies bright, jaws hardened and bright.

Aluminium bodies hard anodised.

Note:

These chucks have been specifically designed to meet requirements for a low clamping force with high precision. For internal and external holding of cylindrical workpieces. The jaws are moved in and out by simply rotating the clamping ring by hand or using the supplied lever. The hardened internal jaws, supplied as standard are reversible. The jaw number is marked on the top and bottom face of each jaw. The jaw number is marked on the matching slot of the chuck body.

Chuck D=50 with operating tool and Ø2 mm pins, 3x12 mm and 3x18 mm long.

Chuck D=64 with operating tool and Ø2 mm pins, 3x12 mm and 3x18 mm long.

Chuck D=104 with operating tool and Ø3 mm pins, 3x12 mm, 3x18 mm and 3x24 mm long.

Chuck D=160 with operating tool and Ø4 mm pins, 3x18 mm and 3x24 mm long.

The pins can be inserted into the hole in the front face of each jaw and are used for raised holding of light parts. The pins can be removed again.

Concentricity < 0.03 mm

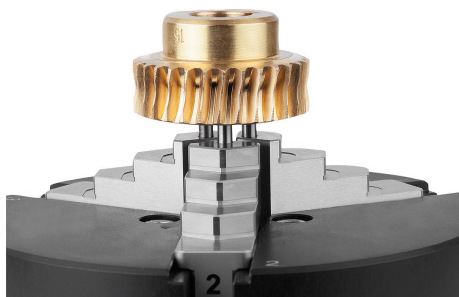
Circular runout < 0.01 mm

Repeat clamping accuracy < 0.01 mm

Drawing reference:

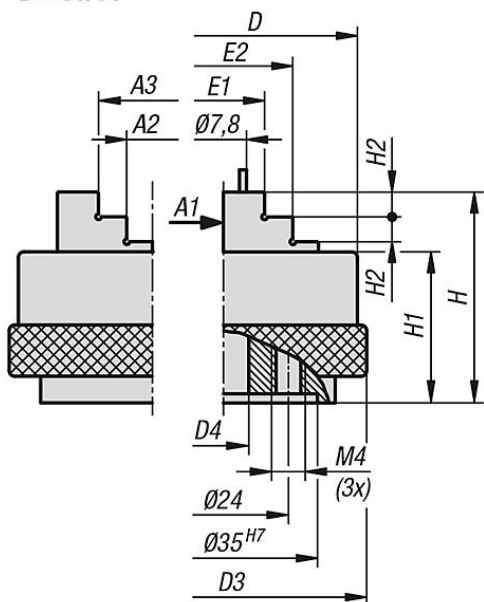
1) Connection dimensions for 100 and 160 mm chucks.

Item description/product images

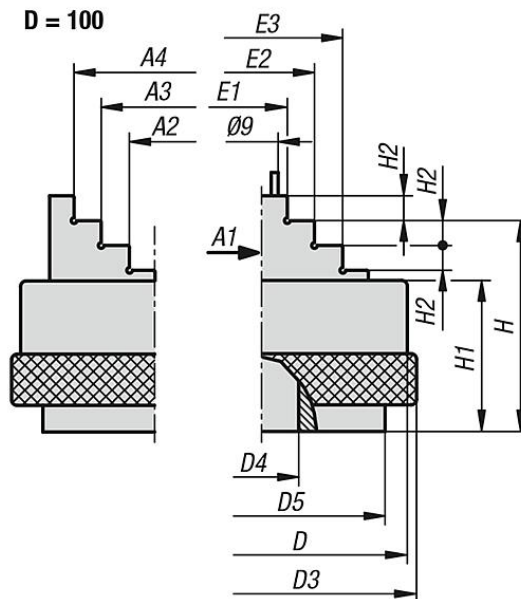


Drawings

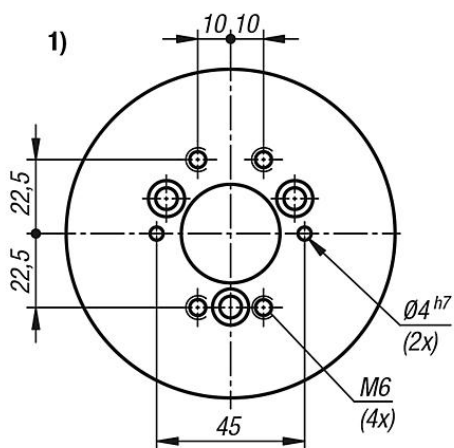
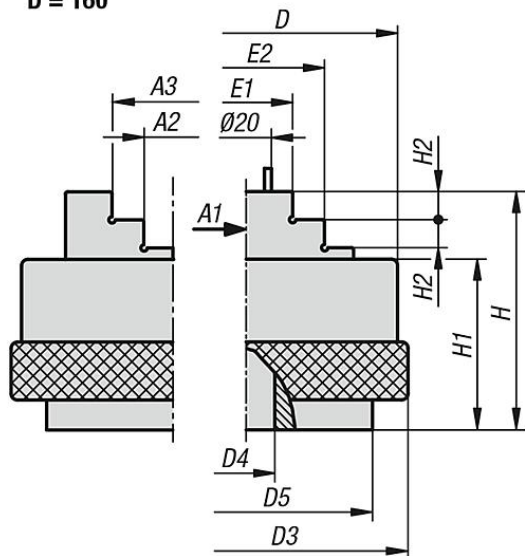
D = 50/64



D = 100



D = 160



Overview of items

Order No.	Main material	A1	A2	A3	A4	D	D1	D2	D3	D4	D5	E1	E2	E3	H	H1	H2
33226-50	steel	1-18	18-36	36-54	-	50	34,8	16,8	52,5	11	-	17-35	35-53	-	37,5	28	4
33226-64	steel	1-30	18-48	36-66	-	64	34,8	16,8	66	13	-	17-47	35-65	-	37,5	28	4
33226-100	aluminium	1-40	28-66	48-84	68-102	104	60	40	105,5	18	89	20-60	40-80	60-100	48	33	4,5
33226-160	aluminium	2,5-70	42-120	100-160	-	160	82	38	164	34	96	38-100	90-160	-	78,5	53	10