

Item description/product images



Description

Material:

Steel.

Version:

Electro zinc-plated or black phosphated.

Note:

Levelling feet consist of a plate and a threaded spindle.

The matching plate must be selected based on the inside diameter D1.

On request:

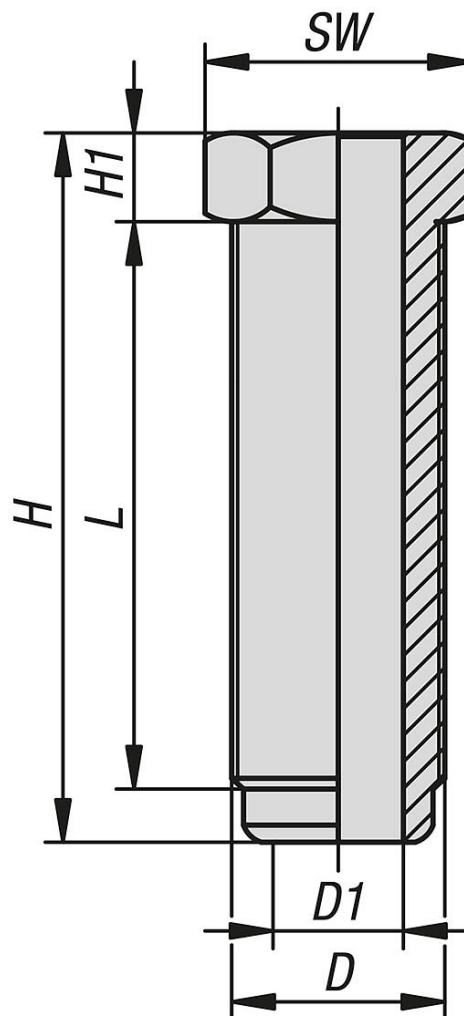
Hollow screw with small hex size.

Accessory:

Plate 27793-04.

Nut 07210-02.

Drawings



Overview of items

Order No.	Surface finish body	D	D1	H	H1	L	SW	Load rating max. kN (static load only)
27793-10-112413X085	galvanised	M24x2	13	105	15	85	24	60
27793-10-113622X095	galvanised	M36x2	22	120	15	95	41	90
27793-10-113622X170	galvanised	M36x2	22	195	15	170	41	90
27793-10-122413X085	phosphated	M24x2	13	105	15	85	24	60
27793-10-123622X095	phosphated	M36x2	22	120	15	95	41	90
27793-10-123622X170	phosphated	M36x2	22	195	15	170	41	90