

Sample order for Position Indicators programmed 21922 and 21923

Order code:

21922-

Indicator after
one rotation:

e.g.
21922-0200021120
Please indicate here which
value is to be displayed
after one rotation (this is
usually the spindle pitch).

Important:

Please note the decimal
point position!



Angle mode:

(resolution 0.1°)
If you want the display to
be in angle mode, enter
03600.

The display in angle mode
is 03600 after one rotation
and returns to 00000 for
the next rotation.

Decimal point position:

e.g.
21922-0200021120
Please indicate here how
many decimal places you
require.

0 = 00000
1 = 0000.0
2 = 000.00
3 = 00.000



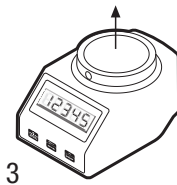
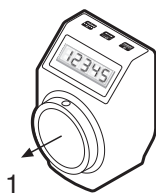
Angle mode:

If you want the display to
be in angle mode, the
decimal point is best put in
position 1.

This means the display
shows the value 0360.0
after one rotation.

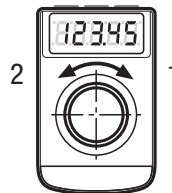
Assembly position:

e.g.
21922-0200021120
1 = Mounting position for
horizontal spindle
3 = Mounting position for
vertical spindle



Count direction:

e.g.
21922-0200021120
1 = clockwise
(ascending values)
2 = anticlockwise
(ascending values)



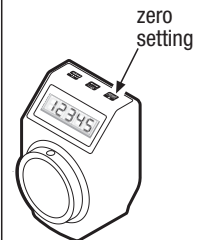
Colour:

e.g.
21922-0200021120
1 = orange
2 = black



Zero-point position:

e.g.
21922-0200021120
0 = directly
5 = delayed by 5 sec.



The Zero-point position
can be delayed by 5 sec.
by means of a parameter,
in order to avoid accidental
zero setting.

Application using position indicators

