

Item description/product images



Description

Product description:

Support elements are used during machining to prevent vibrations and deflections on the workpiece. The screw-on support elements can be mounted horizontally or vertically. The two mounting options enable space-saving positioning in the clamping fixtures.

Hydraulic locking can be used in combination or separately with hydraulic clamping.

Material:

Housing and piston steel.

Version:

Housing black oxidised.

Piston hardened.

Note:

Form A, engaged by hydraulics:

Clamping bolt retracted in initial position. Pin hydraulically extended and engaged by spring force.

Form B, engaged by spring force:

Clamping pin extended in initial position. Engaged by spring force

Permitted loading forces must be taken into account.

Follow safety instructions.

Type of operation:

Drilled channels.

Technical data:

- Max. operating pressure: 500 bar.
- Permitted loading at 500 bar: 9 kN.
- Min. oil pressure: 100 bar.
- Max. tightening torque: 60 Nm.

Assembly:

See mounting contour.

Advantages:

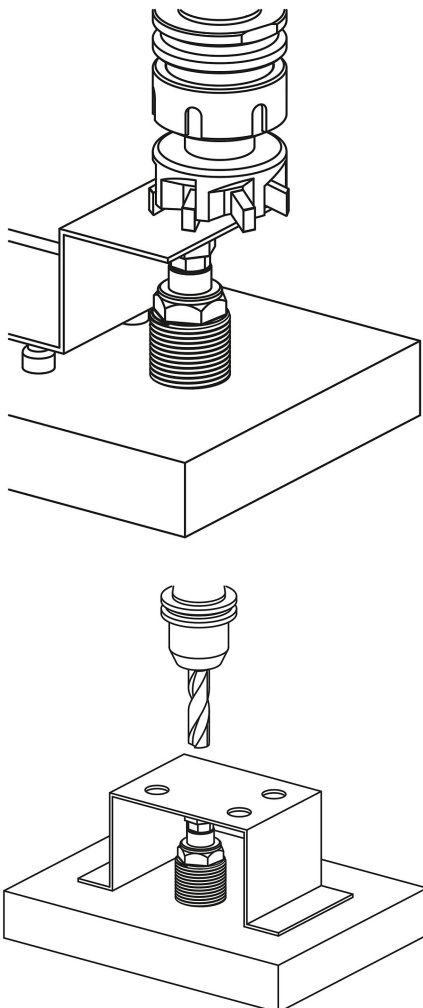
- Integrated metal wiper.
- Always engaged by spring force.
- Low mounting dimensions.
- Horizontal/vertical mounting possible.
- Separate/combined locking and clamping process
- Installed Kantseal washer

Supplied with:

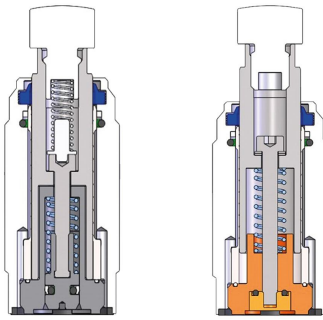
1 Kantseal square washer supplied.

Drawing reference:

1) Mounting contour



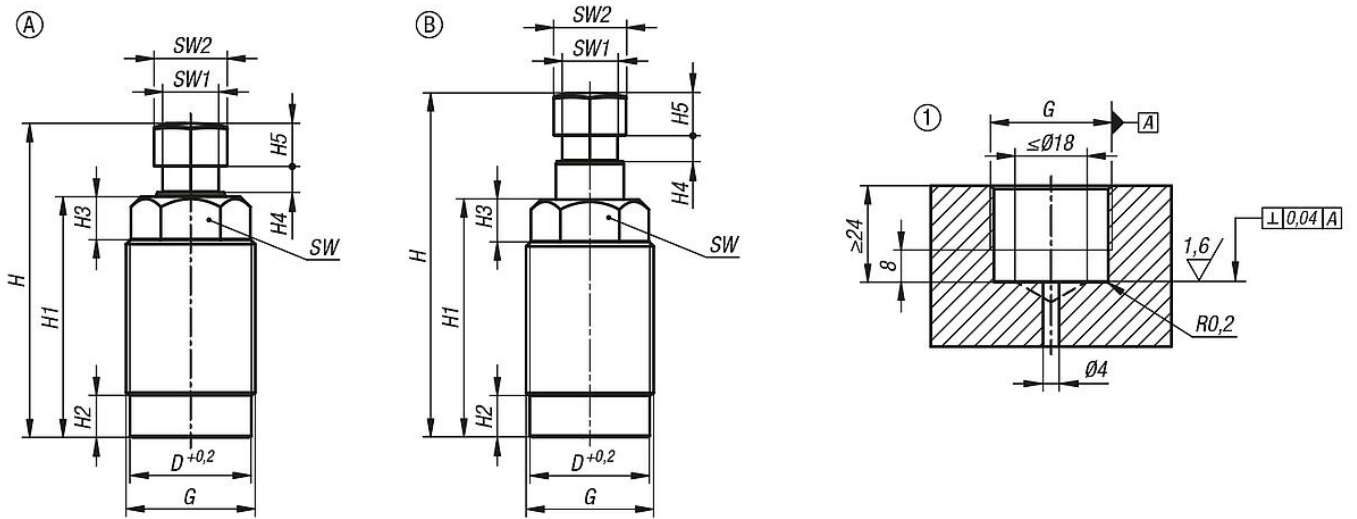
Item description/product images



Engaged by hydraulics

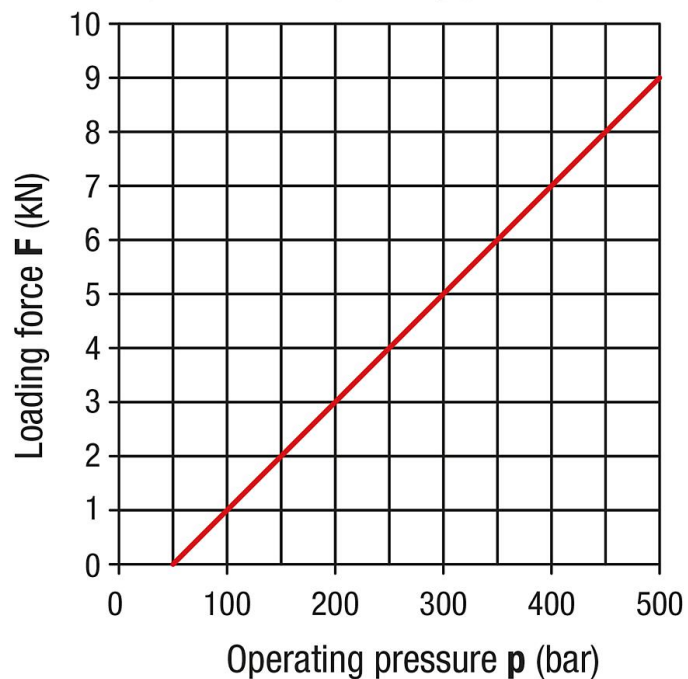
Engaged by spring force

Drawings



Clamping force diagram

Permitted loading force **F**
dependent on operating pressure **p**



Overview of items

Order No.	Form	Piston Ø	travel	Connection type	D	G	H	H1	H2	H3	H4	H5	SW	SW1	SW2	Spring force min. (N)	Spring force F approx. (N)	Flow rate max. (cm ³ /s)
02341-160823061	A	16	8	drilled channels	28,2	M30x1,5	72,5	55,5	9,5	10	6	10	24	13	17	10	23	25
02341-160823062	B	16	8	drilled channels	28,2	M30x1,5	80,5	55,5	9,5	10	6	10	24	13	17	8	13	-