

Item description/product images



Description

Material:

Body aluminium.

Double-acting piston rod stainless steel.

Version:

Body black anodised.

Note:

Swing clamps are used where low clamping forces suffice or where the clamping point must be free when mounting and removing the workpiece. The block form of the housing offers universal fastening possibilities. The magnetic piston is primed for electrical end position feedback.

Including screw and lock washer for fastening the clamping arms (accessories).

The swing action of the clamp should not be blocked.

F1 = at 6 bar (max. operating pressure).

On request:

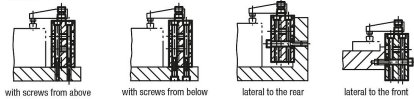
Proximity switch.

Accessory:

- Clamping arm 05620

- Adapter 05625

Examples:



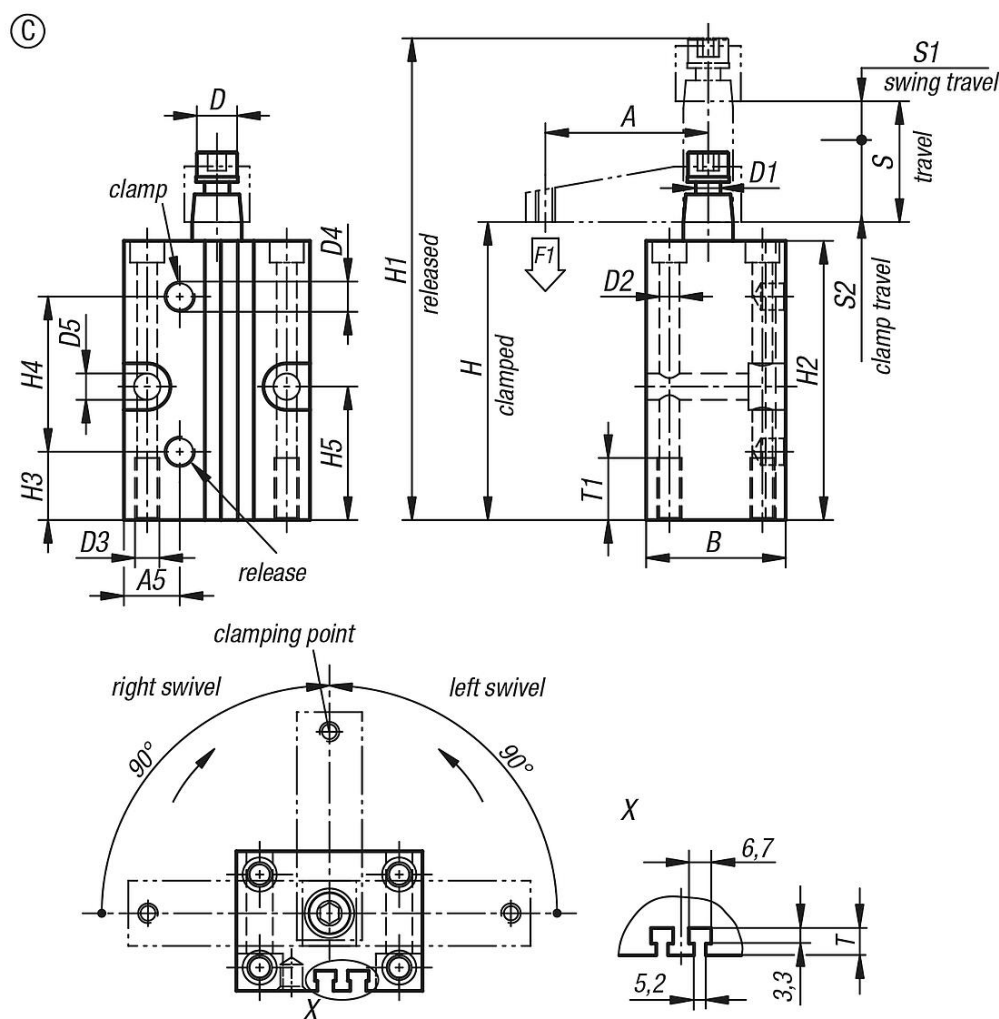
with screws from above

with screws from below

lateral to the rear

lateral to the front

Drawings



Overview of items

Order No.	Version 2	Form	Size	A	A1	A2	A3	A4	A5	B	D	D1	D2	D3	D4	D5
05610-1251	swivel to the right	C	25	50	7,5	15	40	20	17	35	14	M8	6,5	M8	M5	8,5
05610-1321	swivel to the right	C	32	60	12,5	20	45	30	18	45	16	M8	6,5	M8	G1/8	8,5
05610-1401	swivel to the right	C	40	70	15,5	24,5	52	37	22	55	16	M8	8,5	M10	G1/8	8,5
05610-1501	swivel to the right	C	50	80	21,5	31	66	46	25	65	20	M10	8,5	M10	G1/8	10,5
05610-1631	swivel to the right	C	63	90	27,5	37,5	80	60	30	80	20	M10	10,5	M12	G1/8	10,5
05610-2251	swivel to the left	C	25	50	7,5	15	40	20	17	35	14	M8	6,5	M8	M5	8,5
05610-2321	swivel to the left	C	32	60	12,5	20	45	30	18	45	16	M8	6,5	M8	G1/8	8,5
05610-2401	swivel to the left	C	40	70	15,5	24,5	52	37	22	55	16	M8	8,5	M10	G1/8	8,5
05610-2501	swivel to the left	C	50	80	21,5	31	66	46	25	65	15	M10	8,5	M10	G1/8	10,5
05610-2631	swivel to the left	C	63	90	27,5	37,5	80	60	30	80	15	M10	10,5	M12	G1/8	10,5

Order No.	H	H1	H2	H3	H4	H5	Travel S	L	S1	S2	T	T1	F1 N	Accessories
05610-1251	83	125	78	17	44,5	32	27	55	15	12	5	20	170	05620-25, 05625-2500
05610-1321	96	145	90	22	50	43	30	60	16	14	6,5	20	270	05620-32, 05625-3240
05610-1401	96	145	90	20	52	40	31	70	16	15	8	25	450	05620-40, 05625-3240
05610-1501	106	162	100	25	53,5	45	30	85	15	15	6,5	30	700	05620-50, 05625-5063
05610-1631	106	162	100	28	53,5	36	30	100	15	15	8,5	30	1100	05620-63, 05625-5063
05610-2251	83	125	78	17	44,5	32	27	55	15	12	5	20	170	05620-25, 05625-2500
05610-2321	96	145	90	22	50	43	30	60	16	14	6,5	20	270	05620-32, 05625-3240
05610-2401	96	145	90	20	52	40	31	70	16	15	8	25	450	05620-40, 05625-3240
05610-2501	106	162	100	25	53,5	45	30	85	15	15	6,5	30	700	05620-50, 05625-5063
05610-2631	106	162	100	28	53,5	36	30	100	15	15	8,5	30	1100	05620-63, 05625-5063

