

Item description/product images



Description

Material:

Steel 1.0718.
Stainless steel 1.4305.

Version:

Steel black oxidised.
Stainless steel bright.
Insert stainless-steel.

Note:

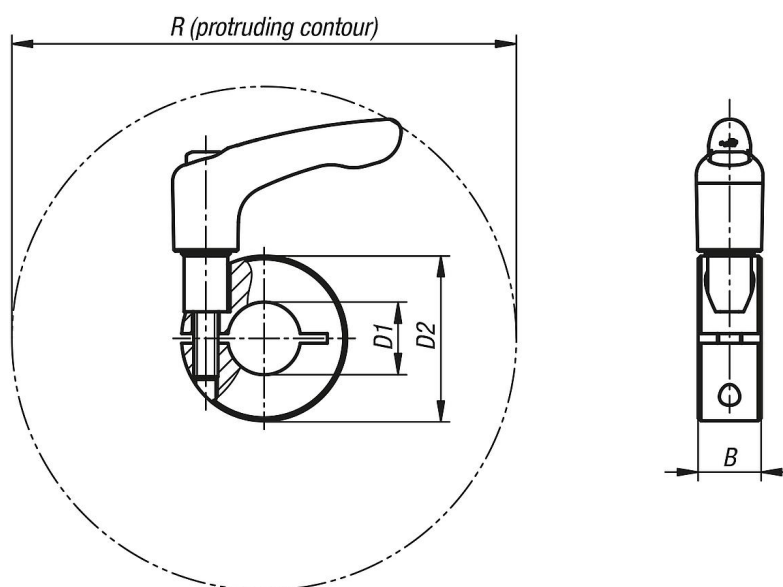
One-piece shaft collars surround the shaft with an equal distribution of the clamping force. This leads to a very precise fit and high retaining force without damaging the shaft.

The shaft tolerance should lie within h11.

On request:

Other dimensions.

Drawings



Overview of items

Order No.	Main material	B	D1	D2	R
07810-11001	steel	9	10	24	44,1
07810-11201	steel	11	12	28	90,4
07810-11501	steel	13	15	34	105
07810-11601	steel	13	16	34	105
07810-11801	steel	13	18	36	105,7
07810-12001	steel	15	20	40	103,8
07810-12201	steel	15	22	42	104,2
07810-12501	steel	15	25	45	104,8
07810-12801	steel	15	28	48	106,8
07810-13001	steel	15	30	54	112,6
07810-14001	steel	15	40	60	113,2

Overview of items

Order No.	Main material	B	D1	D2	R
07810-15001	steel	19	50	78	150,2
07810-11002	stainless steel	9	10	24	44,1
07810-11202	stainless steel	11	12	28	90,4
07810-11502	stainless steel	13	15	34	105
07810-11602	stainless steel	13	16	34	105
07810-11802	stainless steel	13	18	36	105,7
07810-12002	stainless steel	15	20	40	103,8
07810-12202	stainless steel	15	22	42	104,2
07810-12502	stainless steel	15	25	45	104,8
07810-12802	stainless steel	15	28	48	106,8
07810-13002	stainless steel	15	30	54	112,6
07810-14002	stainless steel	15	40	60	113,2
07810-15002	stainless steel	19	50	78	150,2