

Item description/product images



Description

Material:
Carbon steel.

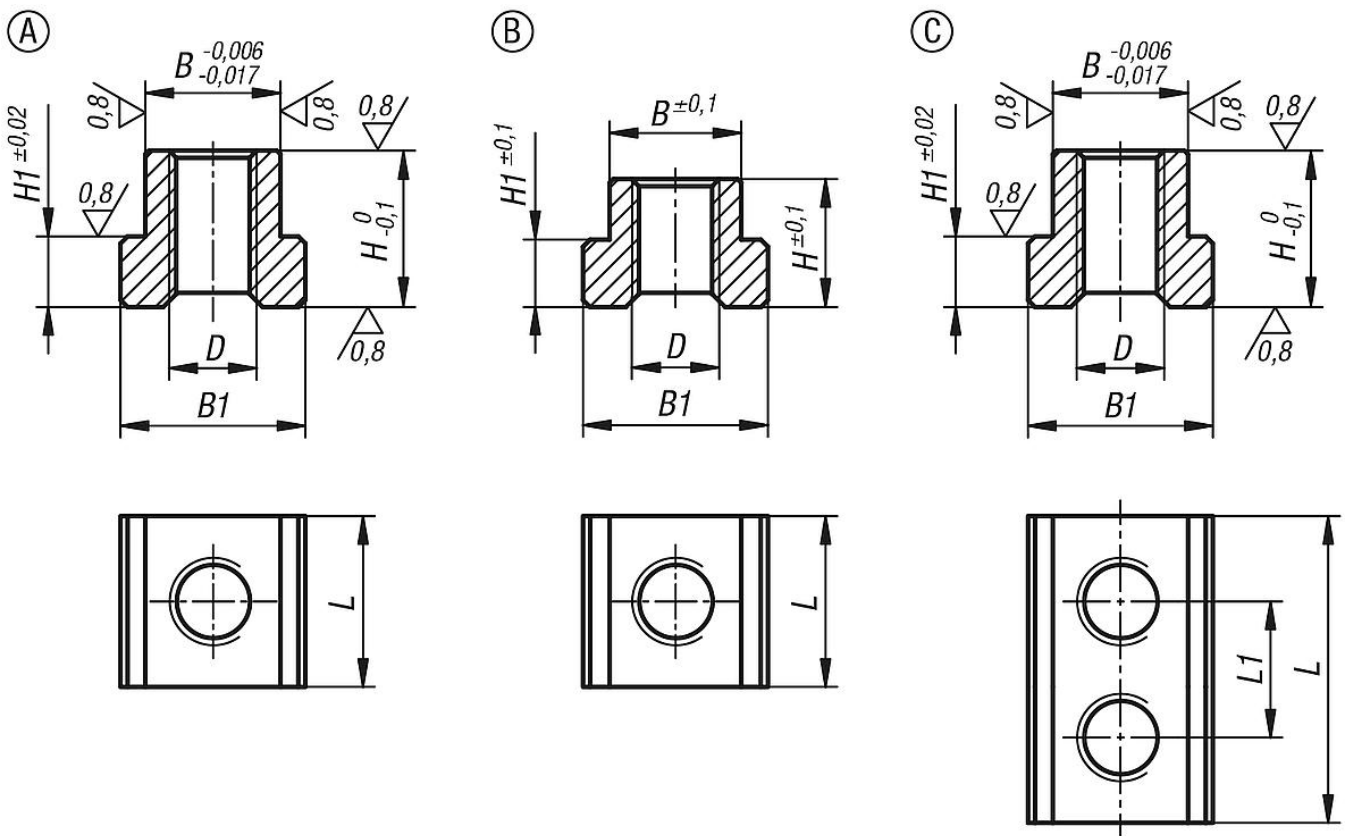
Version:
Tempered. Guide faces ground (HRC 38).

Note:
T-slot keys are matched to the multiple clamping system.
Form A/C are used for fixed stops.
Form B is for operating the clamping wedge of the clamping wedge segments.

Application:
The T-slot keys are inserted into the clamping rail at the appropriate position. The cap screw is used to screw the T-slot keys to the fixed stops and wedge clamps.

Advantages:
With Form A/C, the T-slot key has very little play in the clamping rail, so the fixed stops can also be inserted from the side.

Drawings



Overview of items

Order No.	suitable for system width	Suitable for	Form	L	L1	B	H	B1	H1	D Internal thread
41505-17-05010241	50	fixed jaw single-sided	A	24	-	19	22	26	9,95	M10
41505-17-05010361	50	fixed jaw double-sided	C	36	18	19	22	26	9,95	M10

Overview of items

Order No.	suitable for system width	Suitable for	Form	L	L1	B	H	B1	H1	D Internal thread
41505-17-05012241	50	wedge clamp with fixed jaw	A	24	-	19	22	26	9,95	M12
41505-17-05012262	50	double-sided wedge clamp	B	26	-	18,5	18	26	9,5	M12