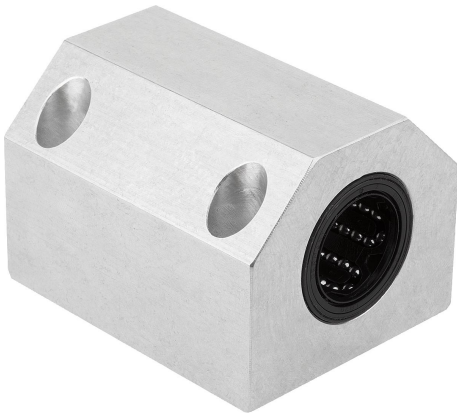


Item description/product images



Description

Material:
Housing aluminium

Version:
Bright.

Note:
The ready-to-install compact linear housing units consist of extruded aluminium housing, two installed linear ball bearings 21511-01 and double-sided seal.

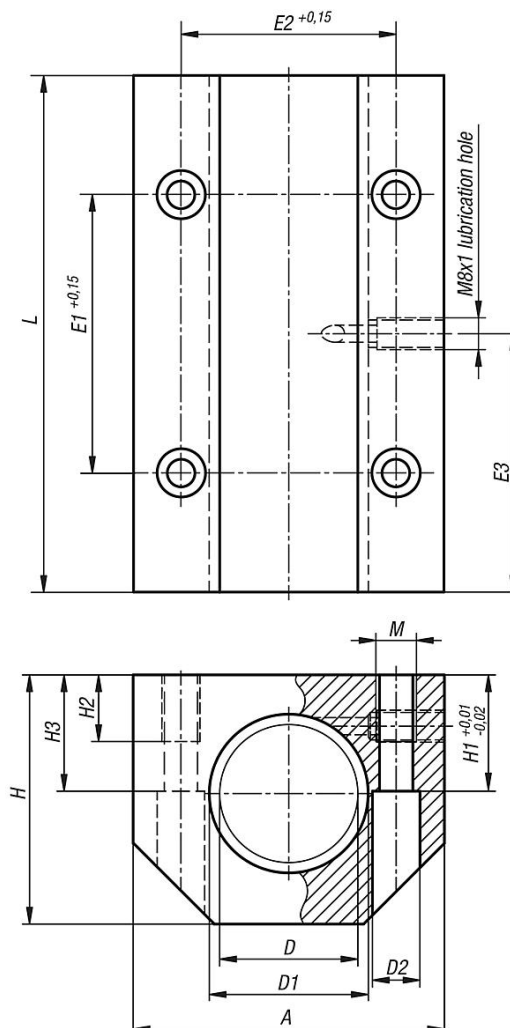
Recommended shaft tolerance: h6.

Basic load ratings according to specification of the linear ball bearings (x2).

With lubrication hole M8x1.

Accessory:
Precision guide shafts 21595.
Fastening screws 07160.

Drawings



Overview of items

Order No.	A	D	D1	D2	E1	E2	E3	H	H1	H2	H3	L	M
21540-10-121102	40	12	19	4,3	35	29	30	33	17	11	16	60	M5
21540-10-161102	45	16	24	4,3	40	34	32,5	38	19	11	18	65	M5
21540-10-201102	53	20	28	5,3	45	40	32,5	45	23	13	22	65	M6
21540-10-251102	62	25	35	6,6	55	48	42,5	54	27	18	26	85	M8
21540-10-301102	67	30	40	6,6	70	53	52,5	60	30	18	29	105	M8
21540-10-401102	87	40	52	8,4	85	69	62,5	76	39	22	38	125	M10
21540-10-501102	103	50	62	10,5	100	82	72,5	92	47	26	46	145	M12