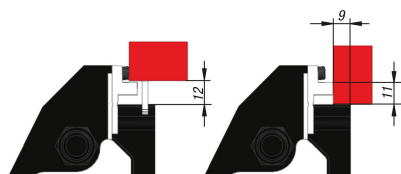
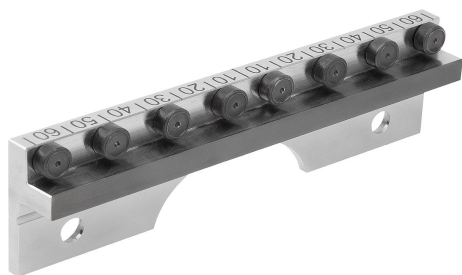


Item description/product images



Description

Product description:

The combination jaw plates are used for positive clamping without pre-machining, e.g. for blanks, heavy duty cutting, castings etc. and for pull-down clamping of pre-machined and ground workpiece surfaces.

Material:

Steel.

Version:

Jaw plates hardened, bright.
 Jaw pins hardened, black oxidised.
 Clamping surface carbide coated.
 Laser marked scale.

Note:

Additional product information can be found in the operating instructions.

Accessory:

Torx screws M6x10

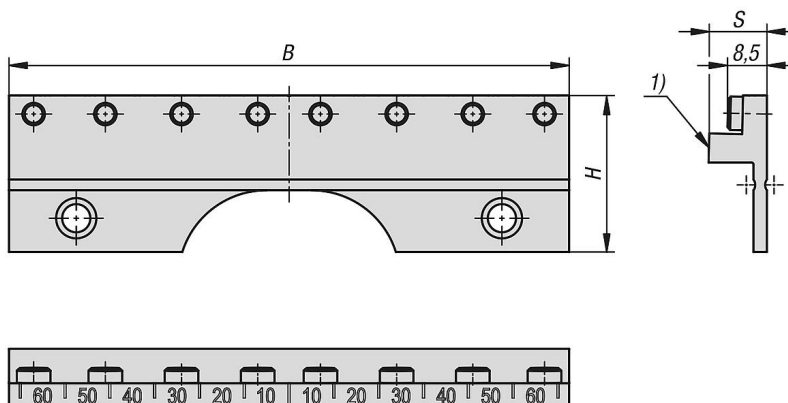
Applications:

Positive clamping without pre-machining.
 Pre-machined and ground workpiece surfaces.

Drawing reference:

1) Clamping surface carbide coated

Drawings



Overview of items

Order No.	B	H	S	No. of pins
41410-0902	90	35	13	6
41410-1252	125	35	13	8

