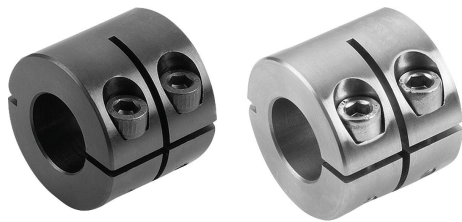


## Item description/product images



## Description

**Material:**

Steel 1.0718.  
Stainless steel 1.4305.

**Version:**

Steel black oxidised.  
Screw 12.9 steel.  
Stainless steel bright.  
Screw A2-70 stainless steel.

**Note:**

One-piece shaft collars with an outer slit surround the shaft with an equal distribution of the clamping force. This leads to a very precise fit and high retaining force without damaging the shaft.

The shaft tolerance should lie within h11.

Due to the slit being on the outside of the shaft collar, up to 15% higher clamping forces can be achieved than with the version with slit on the inside. The bore remains cylindrical, thus precisely enclosing the shaft. Less imbalance.

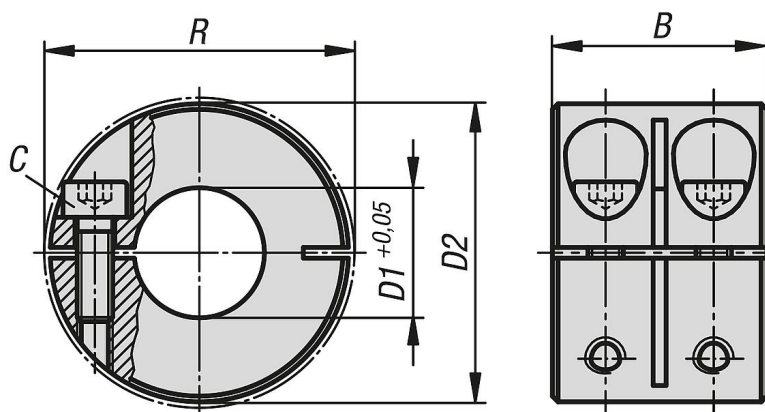
**Temperature range:**

-40 °C - +175 °C.

**On request:**

Other dimensions.

## Drawings



## Overview of items

| Order No.    | Form definition | Main material | B  | C<br>(DIN 912) | D1 | D2 | R    |
|--------------|-----------------|---------------|----|----------------|----|----|------|
| 07811-100801 | slitted outside | steel         | 20 | M3x8           | 8  | 18 | 22,4 |
| 07811-101001 | slitted outside | steel         | 20 | M3x10          | 10 | 24 | 26   |
| 07811-101201 | slitted outside | steel         | 24 | M4x12          | 12 | 28 | 31,8 |
| 07811-101601 | slitted outside | steel         | 29 | M5x16          | 16 | 34 | 39,4 |
| 07811-102001 | slitted outside | steel         | 33 | M6x18          | 20 | 40 | 46,4 |
| 07811-102501 | slitted outside | steel         | 33 | M6x18          | 25 | 45 | 50,8 |
| 07811-103001 | slitted outside | steel         | 33 | M6x18          | 30 | 54 | 58,6 |

## Overview of items

| Order No.    | Form definition | Main material   | B  | C<br>(DIN 912) | D1 | D2 | R    |
|--------------|-----------------|-----------------|----|----------------|----|----|------|
| 07811-104001 | slitted outside | steel           | 33 | M6x18          | 40 | 60 | 65   |
| 07811-105001 | slitted outside | steel           | 41 | M8x25          | 50 | 78 | 87   |
| 07811-100802 | slitted outside | stainless steel | 20 | M3x8           | 8  | 18 | 22,4 |
| 07811-101002 | slitted outside | stainless steel | 20 | M3x10          | 10 | 24 | 26   |
| 07811-101202 | slitted outside | stainless steel | 24 | M4x12          | 12 | 28 | 31,8 |
| 07811-101602 | slitted outside | stainless steel | 29 | M5x16          | 16 | 34 | 39,4 |
| 07811-102002 | slitted outside | stainless steel | 33 | M6x18          | 20 | 40 | 46,4 |
| 07811-102502 | slitted outside | stainless steel | 33 | M6x18          | 25 | 45 | 50,8 |
| 07811-103002 | slitted outside | stainless steel | 33 | M6x18          | 30 | 54 | 58,6 |
| 07811-104002 | slitted outside | stainless steel | 33 | M6x18          | 40 | 60 | 65   |
| 07811-105002 | slitted outside | stainless steel | 41 | M8x25          | 50 | 78 | 87   |