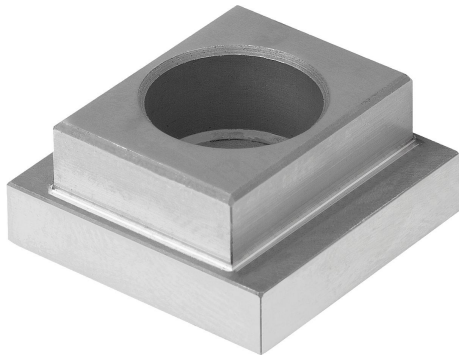


Item description/product images



Description

Material:

Carbon steel 1.1191

Version:

Bright, hardened.

Note:

T-slot keys are used for positioning fixture components quickly and exactly.

The time-consuming work to align components is no longer required.

Version B can be mounted at 90° for a wider mark-out dimension. The T-slot key can therefore be used for two different slot widths.

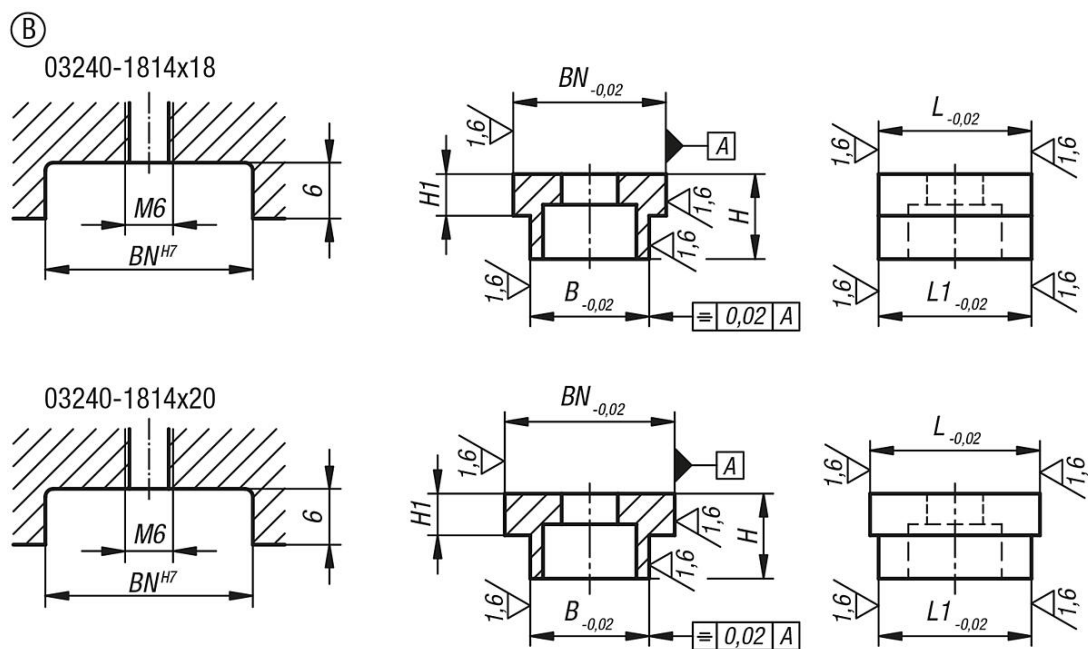
Application:

The T-slot keys are screwed into a slot with the fixture components and then marked out on the counterpiece.

Advantages:

Very time-saving when mounting fixture components.

Drawings



Overview of items

Order No.	Form	Form definition	BN=Slot width	B	H	H1	L	L1
03240-1814X18	B	both sides	18	14	10	4,9	18	18
03240-1814X20	B	both sides	20	14	10	4,9	20	18

