

Item description/product images



Description

Material:

Steel, stainless steel A2 or stainless steel A4.

Version:

Steel electro zinc-plated, hardness

$D1 \leq 14 = 140 \text{ HV}$.

$D1 > 17 = 100 \text{ HV}$.

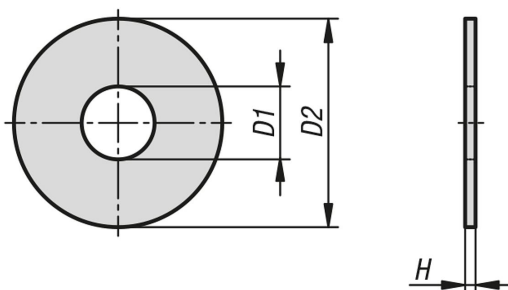
Stainless steel A2, bright.

Stainless steel A4, bright.

Note:

The pulleys have an OD of $D2 = \sim 3 \times D1$.

Drawings



Overview of items

Order No.	Main material	for screws	D1	D2	H
07305-03	steel	M3	3,2	9	0,8
07305-04	steel	M4	4,3	12	1
07305-05	steel	M5	5,3	15	1,2
07305-06	steel	M6	6,4	18	1,6
07305-08	steel	M8	8,4	24	2
07305-10	steel	M10	10,5	30	2,5
07305-12	steel	M12	13	37	3
07305-14	steel	M14	15	44	3
07305-16	steel	M16	17	50	3
07305-18	steel	M18	20	56	4
07305-20	steel	M20	22	60	4
07305-24	steel	M24	26	72	5
07305-30	steel	M30	33	92	6
07305-103	stainless steel A2	M3	3,2	9	0,8
07305-104	stainless steel A2	M4	4,3	12	1
07305-105	stainless steel A2	M5	5,3	15	1,2
07305-106	stainless steel A2	M6	6,4	18	1,6
07305-108	stainless steel A2	M8	8,4	24	2
07305-110	stainless steel A2	M10	10,5	30	2,5
07305-112	stainless steel A2	M12	13	37	3
07305-114	stainless steel A2	M14	15	44	3
07305-116	stainless steel A2	M16	17	50	3
07305-118	stainless steel A2	M18	20	56	4
07305-120	stainless steel A2	M20	22	60	4
07305-124	stainless steel A2	M24	26	72	5
07305-603	stainless steel A4	M3	3,2	9	0,8
07305-604	stainless steel A4	M4	4,3	12	1
07305-605	stainless steel A4	M5	5,3	15	1,2
07305-606	stainless steel A4	M6	6,4	18	1,6

Overview of items

Order No.	Main material	for screws	D1	D2	H
07305-608	stainless steel A4	M8	8,4	24	2
07305-610	stainless steel A4	M10	10,5	30	2,5
07305-612	stainless steel A4	M12	13	37	3
07305-614	stainless steel A4	M14	15	44	3
07305-616	stainless steel A4	M16	17	50	3
07305-618	stainless steel A4	M18	20	56	4
07305-620	stainless steel A4	M20	22	60	4
07305-624	stainless steel A4	M24	26	72	5