

## Item description/product images



## Description

**Material:**

Housing steel.

Coil housing plastic.

**Note:**

The electromagnets are operated with direct current. This generates a magnetic field through the coil in the core. The force field disappears again after the current is switched off.

The electromagnets are attached using the threads on the back. The power connection is made via free wires.

The specified magnetic forces may be lower depending on the material thickness and the surface finish of the material.

By  $D = 15$ , the electromagnet only has a large thread in the centre.

**Technical data:**

Voltage: 24V DC.

Rating: up to IP 65.

Temperature range: up to 155 °C (insulation class F).

Duty cycle: 100 %.

**Application:**

The electromagnets are used for holding, supporting and fixating ferromagnetic workpieces.

**On request:**

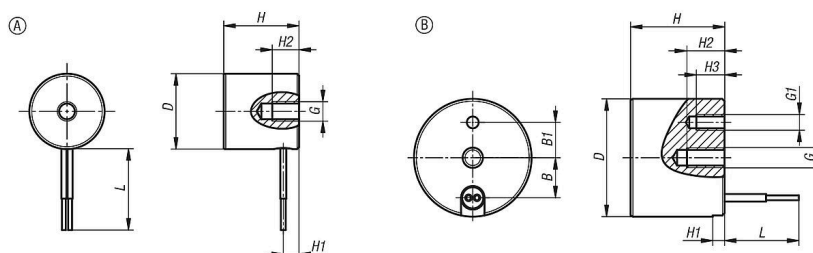
Voltage 12V DC.

**Drawing reference:**

Form A: Wire from the side

Form B: Wire from underneath

## Drawings



## Overview of items

## Magnets, round (electromagnets)

| Order No.    | Form | B   | B1 | D  | G  | G1 | H  | H1 | H2 | H3 | L   | Magnetic force N | W   | Nom. tension VDC |
|--------------|------|-----|----|----|----|----|----|----|----|----|-----|------------------|-----|------------------|
| 09130-010010 | A    | -   | -  | 10 | M2 | -  | 10 | 3  | 4  | -  | 250 | 3                | 1   | 24               |
| 09130-012012 | A    | -   | -  | 12 | M3 | -  | 12 | 4  | 6  | -  | 250 | 15               | 1   | 24               |
| 09130-015015 | B    | 5,2 | -  | 15 | M4 | -  | 15 | 2  | 6  | -  | 250 | 25               | 1,4 | 24               |

## Overview of items

| Order No.    | Form | B    | B1   | D   | G   | G1  | H    | H1  | H2 | H3  | L    | Magnetic force N | W    | Nom. tension VDC |
|--------------|------|------|------|-----|-----|-----|------|-----|----|-----|------|------------------|------|------------------|
| 09130-018011 | B    | 6,5  | 6    | 18  | M3  | M03 | 11   | 1,5 | 5  | 2   | 250  | 45               | 1,4  | 24               |
| 09130-025020 | B    | 8,5  | 7,5  | 25  | M4  | M03 | 20   | 2   | 6  | 3   | 250  | 140              | 3,2  | 24               |
| 09130-032022 | B    | 11,5 | 9    | 32  | M4  | M03 | 22   | 3   | 10 | 4   | 250  | 240              | 3,6  | 24               |
| 09130-040026 | B    | 14,5 | 13   | 40  | M5  | M03 | 25,5 | 4,5 | 10 | 4   | 250  | 475              | 5,2  | 24               |
| 09130-050027 | B    | 19   | 17   | 50  | M5  | M03 | 27   | 4   | 10 | 4,5 | 250  | 760              | 6,5  | 24               |
| 09130-063030 | B    | 25   | 20   | 63  | M8  | M04 | 30   | 5   | 16 | 5,5 | 250  | 1050             | 9    | 24               |
| 09130-080038 | B    | 33   | 25   | 80  | M8  | M04 | 38   | 7   | 16 | 7,5 | 500  | 2400             | 15   | 24               |
| 09130-100043 | B    | 42,5 | 37,5 | 100 | M10 | M05 | 43   | 9   | 20 | 10  | 500  | 3400             | 20,5 | 24               |
| 09130-150056 | B    | 62   | 55   | 150 | M16 | M06 | 56   | 10  | 24 | 10  | 500  | 9300             | 37   | 24               |
| 09130-180063 | B    | 77   | 65   | 180 | M24 | M08 | 63   | 12  | 36 | 13  | 500  | 15000            | 50   | 24               |
| 09130-250080 | B    | 107  | 90   | 250 | M24 | M08 | 80   | 15  | 36 | 15  | 3000 | 30000            | 90   | 24               |