

## Item description/product images



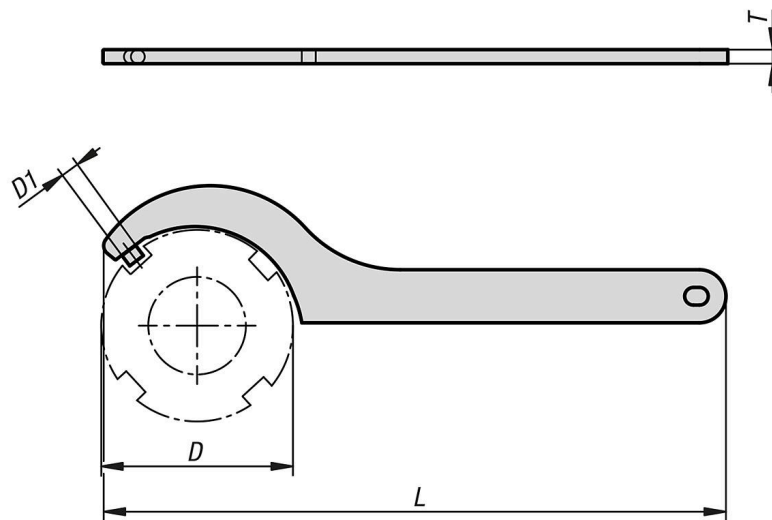
## Description

**Material:**  
Special steel.

**Version:**  
Hardened and annealed in black oxide tone.

**Note:**  
For DIN 1816 round nut with set pin holes.  
With rounded edges for better handling.

## Drawings



## Overview of items

## Hook wrench with pin DIN 1810B

Order No.	for round nut with set pin holes DIN 1816	D min.	D max.	D1	L	T
96650-04-012014	-	12	14	2	110	3
96650-04-020022	-	20	22	2,5	110	3
96650-04-016018	-	16	18	2,5	110	3
96650-04-025028	M10, M12	25	28	3	136	4
96650-04-030032	M14, M16	30	32	4	136	4
96650-04-034036	M18, M20	34	36	4	170	5
96650-04-040042	M22, M24	40	42	4	170	5
96650-04-052055	M32, M35	52	55	5	206	6
96650-04-045050	M26 - M30	45	50	5	206	6
96650-04-058062	M38 - M42	58	62	5	240	7
96650-04-068075	M45 - M50	68	75	6	240	7
96650-04-095100	M62 - M70	95	100	8	280	8
96650-04-080090	M52 - M60	80	90	6	280	8

