

## Item description/product images

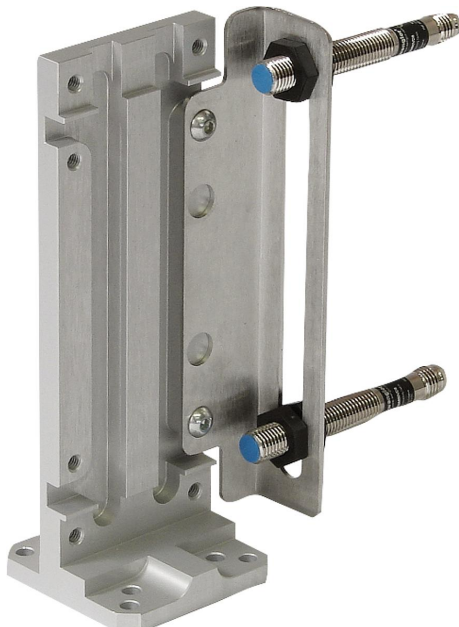
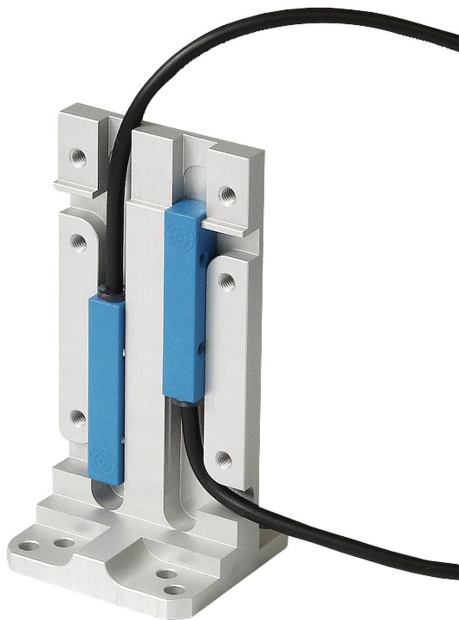
**Description**

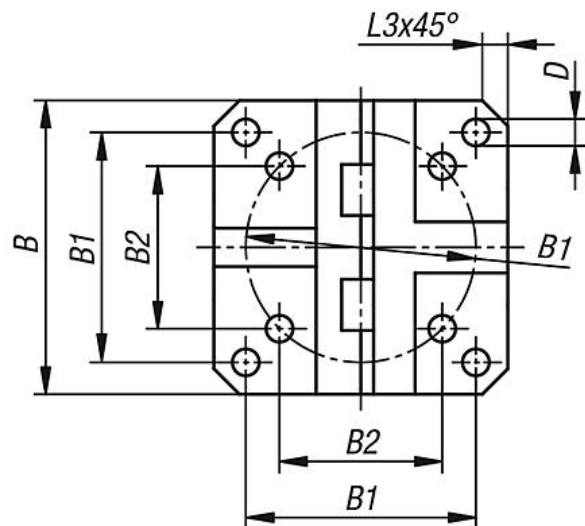
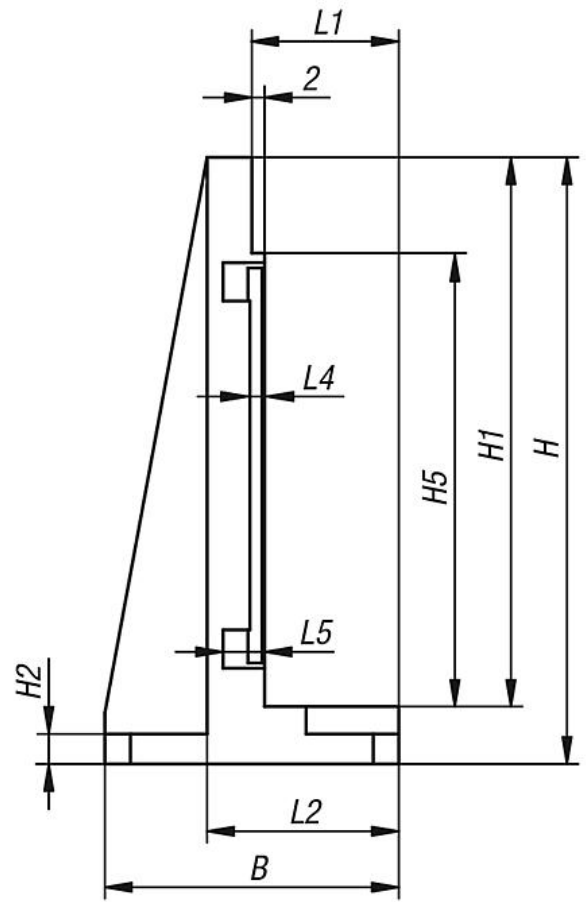
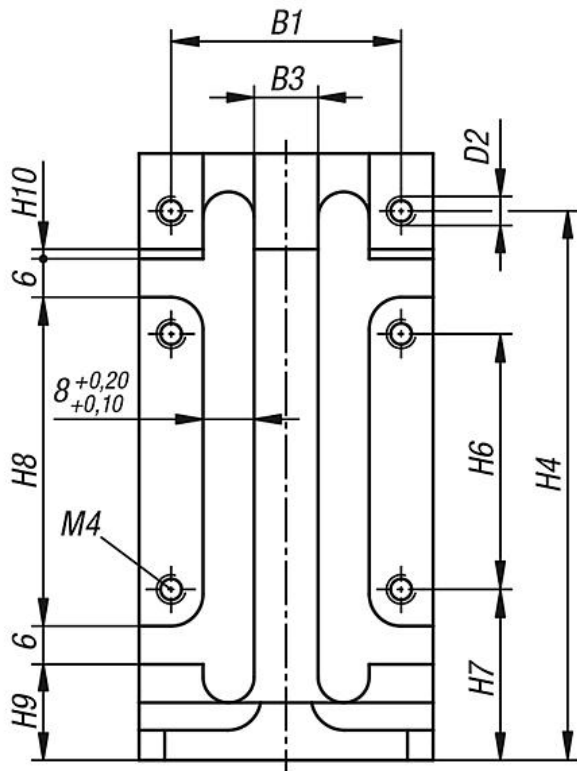
**Material:**  
Aluminium alloy.

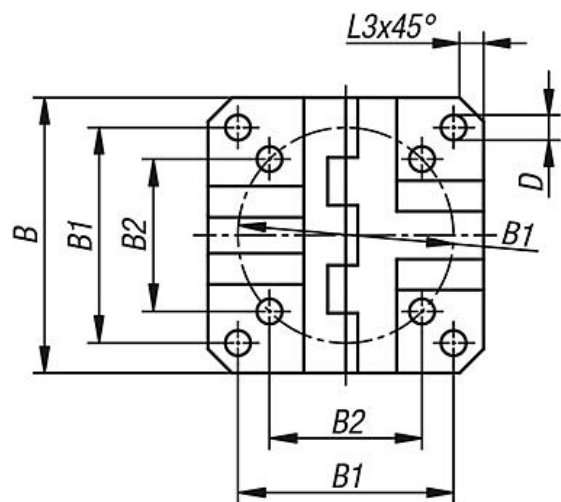
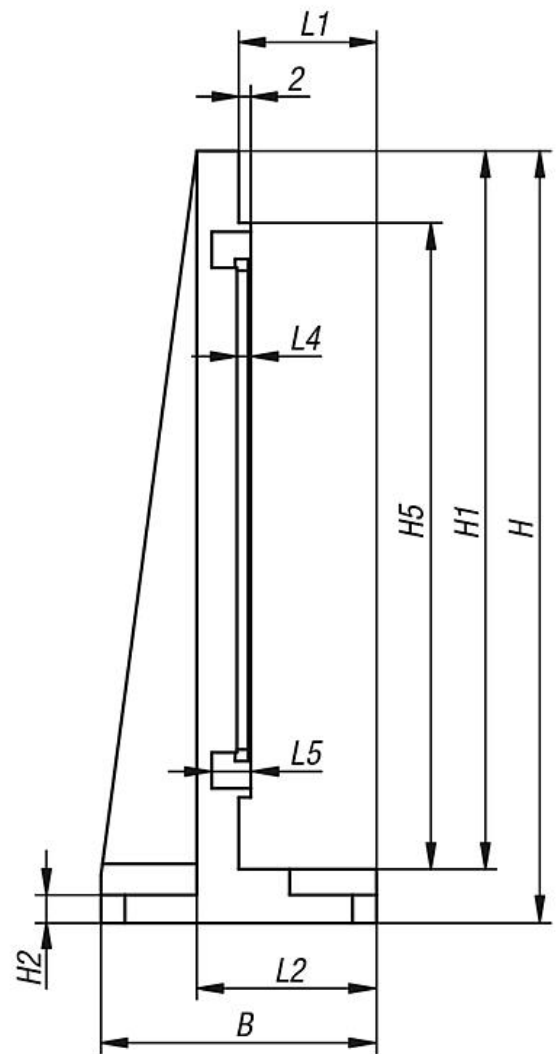
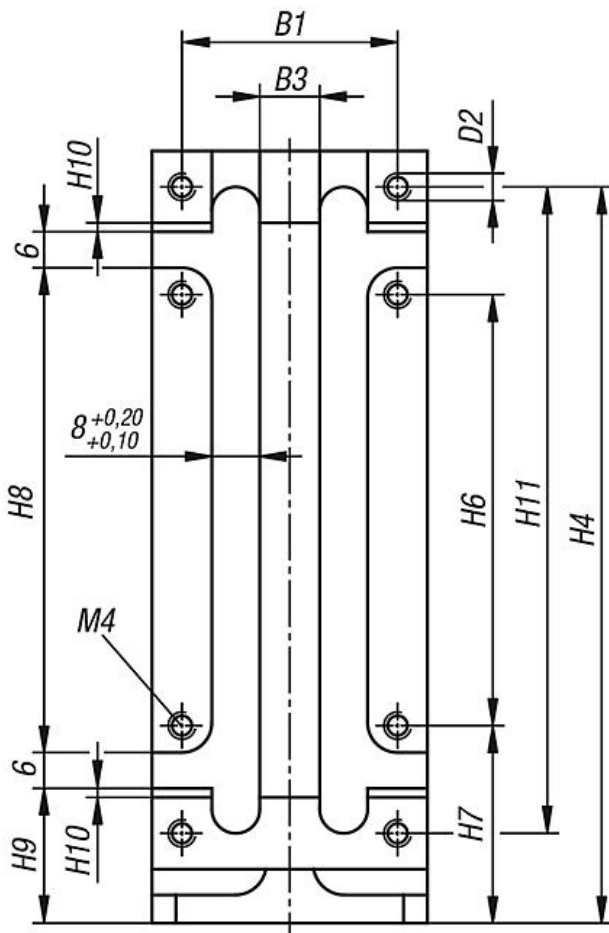
**Version:**  
anodised.

**Note:**  
The mounting plate is used for the vertical mounting of the short or long positioning stages with electric drive. With slots for direct support of inductive proximity switch (20905-005). The proximity switch can be adjusted when the positioning unit is mounted. The threaded holes M4 are used to fasten the sensor holder 21093.

Can be combined with all other parts of the same size.







## Overview of items

| Order No. | Size | Version | B  | B1 | B2   | B3 | D   | D2 | H   | H1  | H2  | H4  | H5  | H6 | H7    | H8   | H9 | H10 | L1 | L2 | L3 | L4  | L5  |
|-----------|------|---------|----|----|------|----|-----|----|-----|-----|-----|-----|-----|----|-------|------|----|-----|----|----|----|-----|-----|
| 21091-081 | 8    | short   | 46 | 36 | 25,5 | 10 | 4,2 | M4 | 95  | 86  | 4,7 | 86  | 71  | 40 | 26,75 | 51,5 | 15 | 1,5 | 23 | 30 | 4  | 2,3 | 6,5 |
| 21091-121 | 12   | short   | 75 | 60 | 42,4 | 30 | 6,4 | M6 | 146 | 136 | 5,7 | 131 | 106 | 60 | 35,5  | 83   | 18 | 3   | 27 | 36 | 7  | 3,3 | 7,5 |

| Order No. | Size | Version | B  | B1 | B2   | B3 | D   | D2 | H   | H1  | H2  | H4    | H5  | H6  | H7 | H8  | H9   | H10 | H11 | L1 | L2 | L3 | L4  | L5  |
|-----------|------|---------|----|----|------|----|-----|----|-----|-----|-----|-------|-----|-----|----|-----|------|-----|-----|----|----|----|-----|-----|
| 21091-082 | 8    | long    | 46 | 36 | 25,5 | 10 | 4,2 | M4 | 129 | 120 | 4,7 | 123   | 108 | 72  | 33 | 81  | 22,9 | 1,5 | 108 | 23 | 30 | 4  | 2,3 | 6,5 |
| 21091-122 | 12   | long    | 75 | 60 | 42,4 | 30 | 6,4 | M6 | 192 | 180 | 5,7 | 184,5 | 177 | 120 | 42 | 132 | 30   | 3   | 165 | 27 | 36 | 7  | 3,3 | 7,5 |