

Item description/product images

**Description****Material:**

Body and rotary table Al alloy, anodised.
 Spindle steel, case-hardened.
 Spindle bearing maintenance-free.
 Position indicator plastic.

Version:

Radial play of rotation axis < 0.015 mm.
 Axial play of rotation axis < 0.02 mm.
 Repeat accuracy < 0.05°.
 Spindle self-locking.

Note:

360° adjustment, no end stop.
 The position indicator reads in increments of 0.1° increasing clockwise from 0.0° to 9.9° while the rotary table rotates counter-clockwise. A scale on the circumference of the rotary stage is marked every 10°.
 The position indicator can be re-mounted in any of 4 positions by removing the grip and loosening the two screws.

Transmission ratio:

21161-08 = 50:1

21161-12 = 55:1

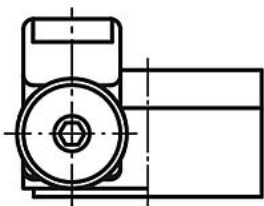
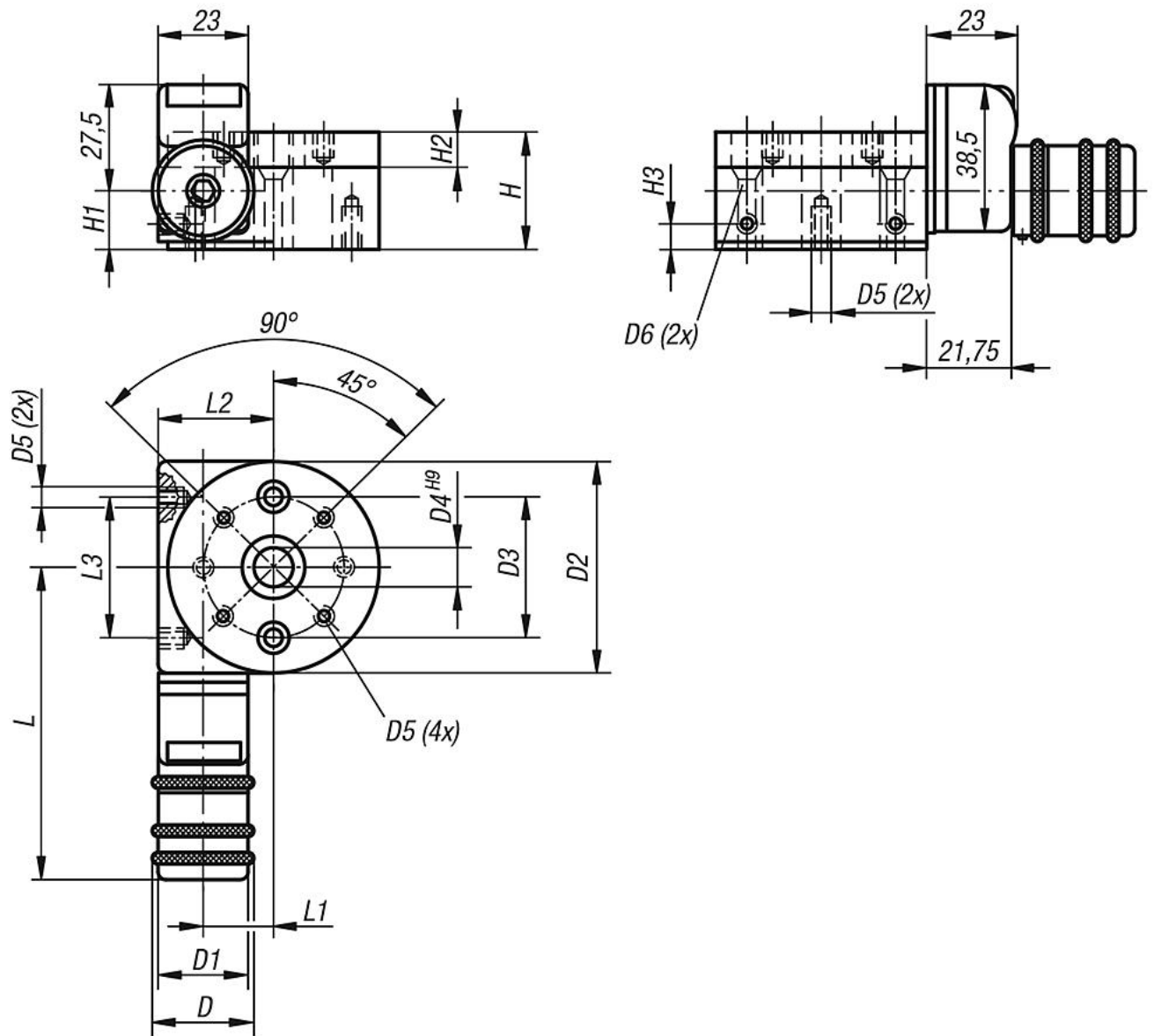
The rotary stage can be easily combined with other modules of the same size.

Drawing reference:

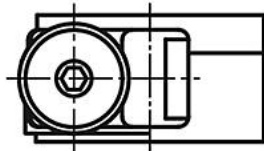
Assembly position of position indicator:

- a) top (standard)
- b) right
- c) bottom
- d) left

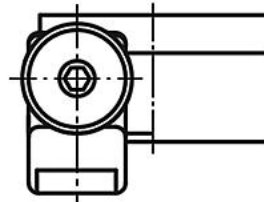
All counterbores to DIN 74-Bm (D6)



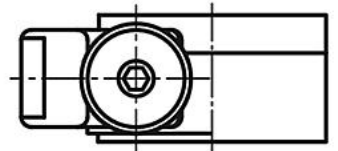
(a)



(b)

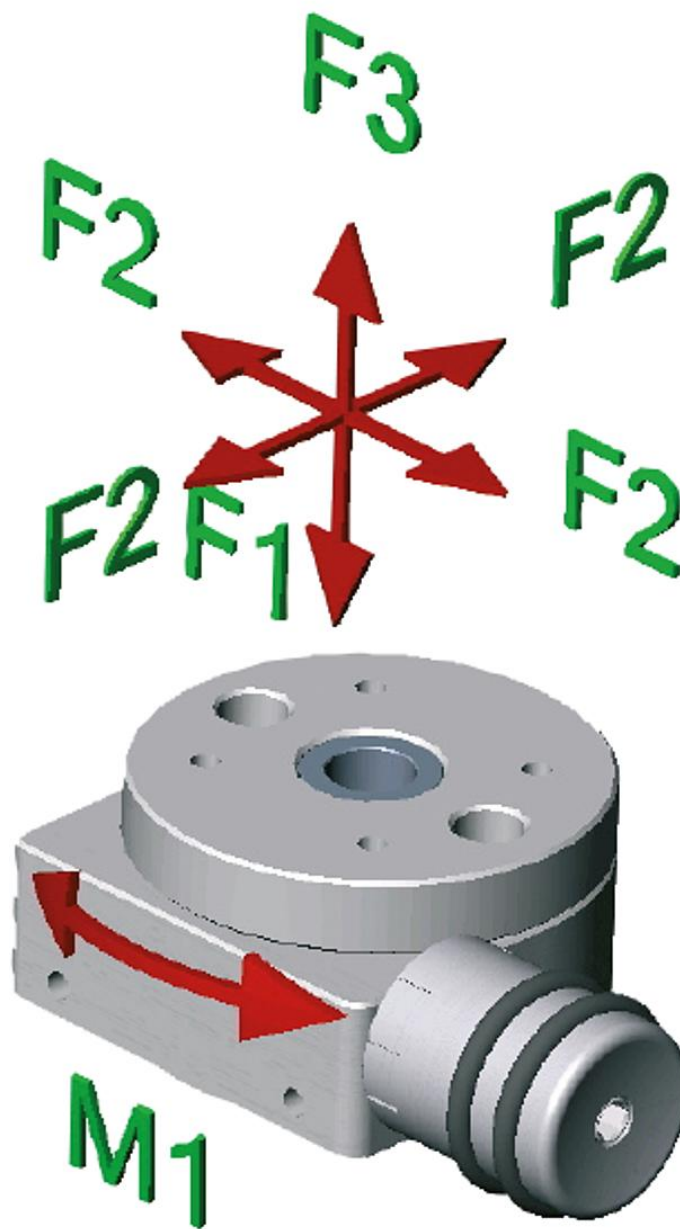


(c)



(d)

Drawings



Overview of items

Order No.	D	D1	D2	D3	D4	D5	D6	H	H1	H2	H3	L	L1	L2	L3	F1 N	F2 N	F3 N	M1 Nm
21161-08	26	23	54	36	10	M4x6	4	30	14	9	6	80	17	29	36	500	500	200	3
21161-12	26	23	80	60	15	M6x9	6	40	17,5	12	6	93	31	43	60	500	500	200	5