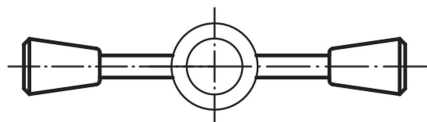


## Item description/product images

INCH  
Parts

## Description

**Material:**

Knobs thermoset PF 31.

Rod steel 1.0718 or stainless steel 1.4305.

**Version:**

Thermoset black, high-gloss polished.

Steel black oxidised or bright stainless steel.

**Note:**

For the inch series, dimension D1 is in inches, all other dimensions are in mm.

## Overview of items

## Gear Levers, inch

Order No.	Main material	Form	D	D1	D2	L	L1	L2
06360-2A2X35	steel	A	8	1/4-20	20	35	9	18
06360-2A2X50	steel	A	8	1/4-20	20	50	9	18
06360-2A2X65	steel	A	8	1/4-20	20	65	9	18
06360-2A3X50	steel	A	10	5/16-18	25	50	13	22,5
06360-2A3X65	steel	A	10	5/16-18	25	65	13	22,5
06360-2A3X80	steel	A	10	5/16-18	25	80	13	22,5
06360-2A3X100	steel	A	10	5/16-18	25	100	13	22,5
06360-2A4X65	steel	A	12	3/8-16	32	65	15	29
06360-2A4X80	steel	A	12	3/8-16	32	80	15	29
06360-2A4X100	steel	A	12	3/8-16	32	100	15	29
06360-2A4X125	steel	A	12	3/8-16	32	125	15	29
06360-2A5X80	steel	A	14	1/2-13	36	80	16	33
06360-2A5X100	steel	A	14	1/2-13	36	100	16	33
06360-2A5X125	steel	A	14	1/2-13	36	125	16	33
06360-2A5X160	steel	A	14	1/2-13	36	160	16	33
06360-12A2X35	stainless steel	A	8	1/4-20	20	35	9	18
06360-12A2X50	stainless steel	A	8	1/4-20	20	50	9	18
06360-12A2X65	stainless steel	A	8	1/4-20	20	65	9	18
06360-12A3X50	stainless steel	A	10	5/16-18	25	50	13	22,5
06360-12A3X65	stainless steel	A	10	5/16-18	25	65	13	22,5
06360-12A3X80	stainless steel	A	10	5/16-18	25	80	13	22,5
06360-12A3X100	stainless steel	A	10	5/16-18	25	100	13	22,5
06360-12A4X65	stainless steel	A	12	3/8-16	32	65	15	29
06360-12A4X80	stainless steel	A	12	3/8-16	32	80	15	29
06360-12A4X100	stainless steel	A	12	3/8-16	32	100	15	29
06360-12A4X125	stainless steel	A	12	3/8-16	32	125	15	29
06360-12A5X80	stainless steel	A	14	1/2-13	36	80	16	33
06360-12A5X100	stainless steel	A	14	1/2-13	36	100	16	33
06360-12A5X125	stainless steel	A	14	1/2-13	36	125	16	33

## Overview of items

Order No.	Main material	Form	D	D1	D2	L	L1	L2
06360-12A5X160	stainless steel	A	14	1/2-13	36	160	16	33
06360-7A2X35	steel	B	8	1/4-20	23	35	9	60
06360-7A2X50	steel	B	8	1/4-20	23	50	9	60
06360-7A2X65	steel	B	8	1/4-20	23	65	9	60
06360-7A3X50	steel	B	10	5/16-18	26	50	13	70
06360-7A3X65	steel	B	10	5/16-18	26	65	13	70
06360-7A3X80	steel	B	10	5/16-18	26	80	13	70
06360-7A3X100	steel	B	10	5/16-18	26	100	13	70
06360-7A4X65	steel	B	12	3/8-16	35	65	15	85
06360-7A4X80	steel	B	12	3/8-16	35	80	15	85
06360-7A4X100	steel	B	12	3/8-16	35	100	15	85
06360-7A4X125	steel	B	12	3/8-16	35	125	15	85
06360-7A5X80	steel	B	14	1/2-13	35	80	16	85
06360-7A5X100	steel	B	14	1/2-13	35	100	16	85
06360-7A5X125	steel	B	14	1/2-13	35	125	16	85
06360-7A5X160	steel	B	14	1/2-13	35	160	16	85
06360-17A2X35	stainless steel	B	8	1/4-20	23	35	9	60
06360-17A2X50	stainless steel	B	8	1/4-20	23	50	9	60
06360-17A2X65	stainless steel	B	8	1/4-20	23	65	9	60
06360-17A3X50	stainless steel	B	10	5/16-18	26	50	13	70
06360-17A3X65	stainless steel	B	10	5/16-18	26	65	13	70
06360-17A3X80	stainless steel	B	10	5/16-18	26	80	13	70
06360-17A3X100	stainless steel	B	10	5/16-18	26	100	13	70
06360-17A4X65	stainless steel	B	12	3/8-16	35	65	15	85
06360-17A4X80	stainless steel	B	12	3/8-16	35	80	15	85
06360-17A4X100	stainless steel	B	12	3/8-16	35	100	15	85
06360-17A4X125	stainless steel	B	12	3/8-16	35	125	15	85
06360-17A5X80	stainless steel	B	14	1/2-13	35	80	16	85
06360-17A5X100	stainless steel	B	14	1/2-13	35	100	16	85
06360-17A5X125	stainless steel	B	14	1/2-13	35	125	16	85
06360-17A5X160	stainless steel	B	14	1/2-13	35	160	16	85
06360-4A2X35	steel	C	8	1/4-20	20	35	9	31
06360-4A2X50	steel	C	8	1/4-20	20	50	9	31
06360-4A2X65	steel	C	8	1/4-20	20	65	9	31
06360-4A3X50	steel	C	10	5/16-18	25	50	13	38
06360-4A3X65	steel	C	10	5/16-18	25	65	13	38
06360-4A3X80	steel	C	10	5/16-18	25	80	13	38
06360-4A3X100	steel	C	10	5/16-18	25	100	13	38
06360-4A4X65	steel	C	12	3/8-16	30	65	15	46
06360-4A4X80	steel	C	12	3/8-16	30	80	15	46
06360-4A4X100	steel	C	12	3/8-16	30	100	15	46
06360-4A4X125	steel	C	12	3/8-16	30	125	15	46
06360-4A5X80	steel	C	14	1/2-13	35	80	16	53
06360-4A5X100	steel	C	14	1/2-13	35	100	16	53
06360-4A5X125	steel	C	14	1/2-13	35	125	16	53
06360-4A5X160	steel	C	14	1/2-13	35	160	16	53
06360-14A2X35	stainless steel	C	8	1/4-20	20	35	9	31
06360-14A2X50	stainless steel	C	8	1/4-20	20	50	9	31
06360-14A2X65	stainless steel	C	8	1/4-20	20	65	9	31
06360-14A3X50	stainless steel	C	10	5/16-18	25	50	13	38
06360-14A3X65	stainless steel	C	10	5/16-18	25	65	13	38
06360-14A3X80	stainless steel	C	10	5/16-18	25	80	13	38
06360-14A3X100	stainless steel	C	10	5/16-18	25	100	13	38
06360-14A4X65	stainless steel	C	12	3/8-16	30	65	15	46
06360-14A4X80	stainless steel	C	12	3/8-16	30	80	15	46
06360-14A4X100	stainless steel	C	12	3/8-16	30	100	15	46
06360-14A4X125	stainless steel	C	12	3/8-16	30	125	15	46
06360-14A5X80	stainless steel	C	14	1/2-13	35	80	16	53
06360-14A5X100	stainless steel	C	14	1/2-13	35	100	16	53
06360-14A5X125	stainless steel	C	14	1/2-13	35	125	16	53
06360-14A5X160	stainless steel	C	14	1/2-13	35	160	16	53
06360-6A2X35	steel	E	8	1/4-20	17	35	9	45
06360-6A2X50	steel	E	8	1/4-20	17	50	9	45
06360-6A2X65	steel	E	8	1/4-20	17	65	9	45
06360-6A3X50	steel	E	10	5/16-18	23	50	13	61

## Overview of items

Order No.	Main material	Form	D	D1	D2	L	L1	L2
06360-6A3X65	steel	E	10	5/16-18	23	65	13	61
06360-6A3X80	steel	E	10	5/16-18	23	80	13	61
06360-6A3X100	steel	E	10	5/16-18	23	100	13	61
06360-6A4X65	steel	E	12	3/8-16	29	65	15	71
06360-6A4X80	steel	E	12	3/8-16	29	80	15	71
06360-6A4X100	steel	E	12	3/8-16	29	100	15	71
06360-6A4X125	steel	E	12	3/8-16	29	125	15	71
06360-6A5X80	steel	E	14	1/2-13	29	80	16	71
06360-6A5X100	steel	E	14	1/2-13	29	100	16	71
06360-6A5X125	steel	E	14	1/2-13	29	125	16	71
06360-6A5X160	steel	E	14	1/2-13	29	160	16	71
06360-16A2X35	stainless steel	E	8	1/4-20	17	35	9	45
06360-16A2X50	stainless steel	E	8	1/4-20	17	50	9	45
06360-16A2X65	stainless steel	E	8	1/4-20	17	65	9	45
06360-16A3X50	stainless steel	E	10	5/16-18	23	50	13	61
06360-16A3X65	stainless steel	E	10	5/16-18	23	65	13	61
06360-16A3X80	stainless steel	E	10	5/16-18	23	80	13	61
06360-16A3X100	stainless steel	E	10	5/16-18	23	100	13	61
06360-16A4X65	stainless steel	E	12	3/8-16	29	65	15	71
06360-16A4X80	stainless steel	E	12	3/8-16	29	80	15	71
06360-16A4X100	stainless steel	E	12	3/8-16	29	100	15	71
06360-16A4X125	stainless steel	E	12	3/8-16	29	125	15	71
06360-16A5X80	stainless steel	E	14	1/2-13	29	80	16	71
06360-16A5X100	stainless steel	E	14	1/2-13	29	100	16	71
06360-16A5X125	stainless steel	E	14	1/2-13	29	125	16	71
06360-16A5X160	stainless steel	E	14	1/2-13	29	160	16	71