

Item description/product images



Description

Material:

Grip and tongue 1.4301 stainless steel.

Housing and nut 1.4305 stainless steel.

Version:

Bright.

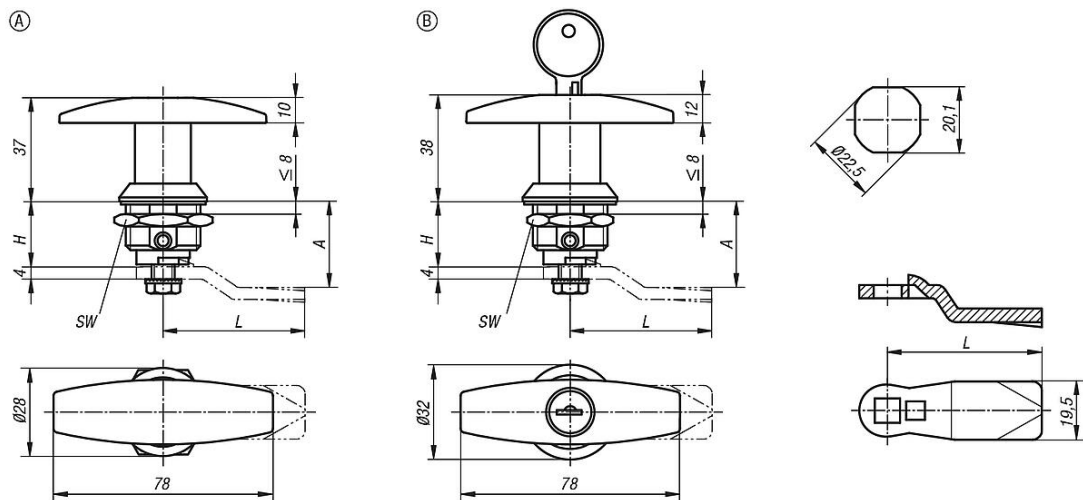
Note:

Quarter-turn lock with T-grip. For right or left mounting with 90° closing. The quarter-turn lock can be installed pre-assembled. Supplied with standard stainless-steel nut. The lockable quarter-turn lock is supplied with 2 keys. The key can be removed in both the closed and open position. The cylinder locks have a single-key system i.e. the same key works in all locks (lock type 1333).

Rating IP65.

Order the desired tongue separately. Every tongue can be combined with this housing.

Drawings



Overview of items

Quarter-turn locks, stainless steel with T-grip

| Order No. | Form | Actuation | H | SW |
|------------|------|-----------------|----|----|
| 05593-1186 | A | T-Grip | 18 | 27 |
| 05593-2186 | B | lockable T-grip | 18 | 27 |

Tongue for quarter-turn lock

| Order No. | A for housing length H=18 | L |
|---------------|---------------------------------|----|
| 05569-245X180 | 18 | 45 |
| 05569-245X200 | 20 | 45 |
| 05569-245X240 | 24 | 45 |
| 05569-245X280 | 28 | 45 |
| 05569-245X320 | 32 | 45 |

Overview of items

| Order No. | A for housing length H=18 | L |
|---------------|---------------------------------|----|
| 05569-245X340 | 34 | 45 |
| 05569-245X360 | 36 | 45 |
| 05569-245X380 | 38 | 45 |
| 05569-245X400 | 40 | 45 |
| 05569-245X420 | 42 | 45 |