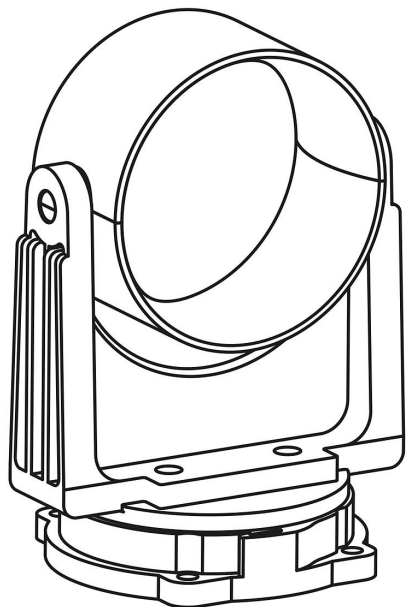


## Item description/product images



## Description

**Material:**

Polyamide PA6.

**Version:**

black.

**Note:**

Rotary flange for use with any connecting element, a low-friction guide or swivel arms. The rotary flange offers greater freedom of movement when guiding energy chains. The rotary flange can be rotated through 360°.

With the optionally available swivel arms, the rotary flange obtains a further degree of movement freedom.

**Assembly:**

The rotary flange is attached to robots/machines at the appropriate point using four screws.

The hole pattern on the rotary plate is matched to those on the connecting elements, low-friction guides and swivel arms.

**Accessory:**

Connecting elements with tension relief 80855-05.

Connecting elements 80855-06.

Low-friction guides 80855-08.

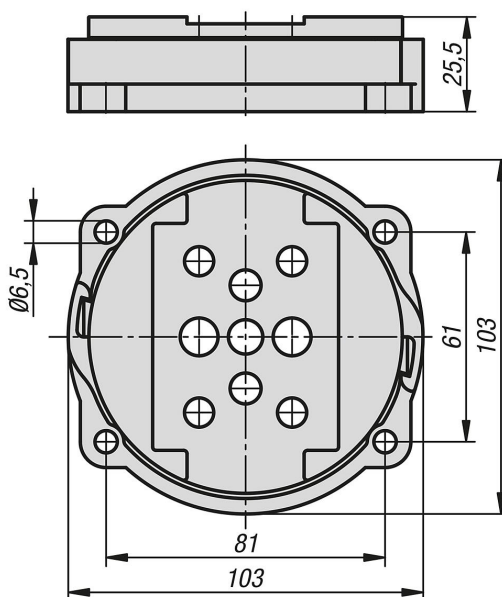
Swivel arms 80855-11.

Brackets for adapters 80855-21.

Brackets with spring stop 80855-40.

Swivel arms with spring stop 80855-41.

## Drawings



## Overview of items

Order No.	Nominal size
80855-10-0701	70