

Item description/product images



Description

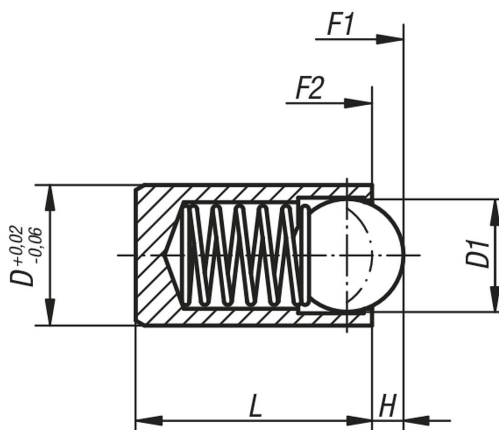
Material:

Sleeve and spring stainless steel.
Ball stainless steel or POM.

Version:

Ball hardened, bright.

Drawings



Overview of items

Order No.	Component material	D	D1	H	L	Spring force initial pressure F1 approx. N	Spring force final pressure F2 approx. N
03072-203	stainless steel	3	2	0,65	7	5	7
03072-204	stainless steel	4	3	0,8	9	12	22
03072-205	stainless steel	5	4	1	12	19	30
03072-206	stainless steel	6	5	1,5	14	22	40
03072-208	stainless steel	8	6	1,8	16	42	73
03072-210	stainless steel	10	8	2,7	22	54	100
03072-212	stainless steel	12	10	3,2	24	54	122
03072-304	POM	4	3	0,6	9	12	22
03072-305	POM	5	4	0,9	12	19	30
03072-306	POM	6	5	1,3	14	22	40
03072-308	POM	8	6	1,7	16	42	73
03072-310	POM	10	8	2,6	22	54	100
03072-312	POM	12	10	3,1	24	54	122

