

## Item description/product images

**Description****Material:**

Form C, F, M tool steel  
 Form E, O, P stainless steel  
 Form K POM

**Version:**

Form C hardened and black oxidised.  
 Form E hardened, bright.  
 Form K white.  
 Form O with diamond impregnated surface comparable to 100 grade abrasive grit.  
 Form P with polyurethane surface, hardness 60 Shore.  
 Form F, hardened and black oxidised.  
 Form M with carbide serrations, black oxidised.

**Note:**

Grippers and inserts are ideal for use in clamping arms, gripping systems, clamping fixtures, clamping jaws and self-aligning pads. The use of grippers allows the transfer of very high torque values and above average grip, even with hard materials and surface irregularities.

Form O: The abrasive diamond surface is bonded firmly to the base. It is ideally suited to supporting smooth or slippery applications with a minimum of clamping pressure. This allows the diamond particles to get a firm grip on a very small area with minimum damage to the surface.

The diamond surface offers excellent wear resistance.

Form P: The polyurethane surface is vulcanised firmly to the ball. It is abrasion-resistant and does not discolour. It offers optimum protection against damage to delicate surfaces. The pearl-like surface gives a firm grip and allows air to escape so as to prevent any suction effect between the contact surface and the self-aligning pads.

Grippers and inserts can be fitted in the following self-aligning pads:

Order No. 02003-117X022 up to 02003-936X036

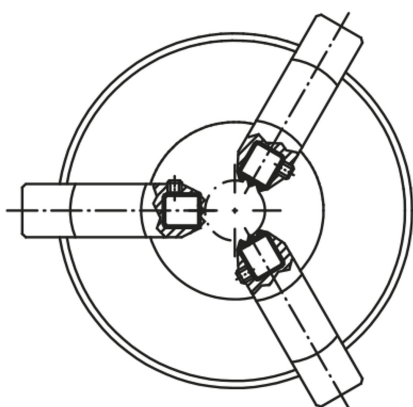
Order No. 02007-110X015 up to 02007-924X100

Order No. 02007-120X030 up to 02007-924X080

Item description/product images

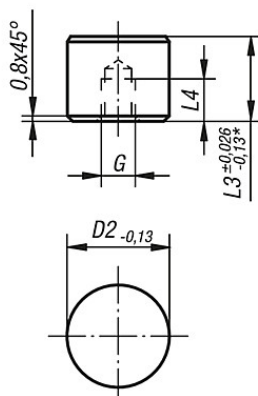


Item description/product images



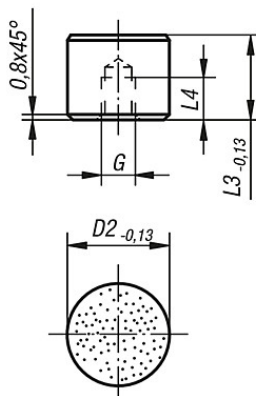
Drawings

Form C, E, K

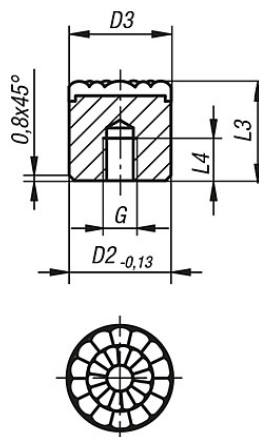


\* Applies for FWorm K

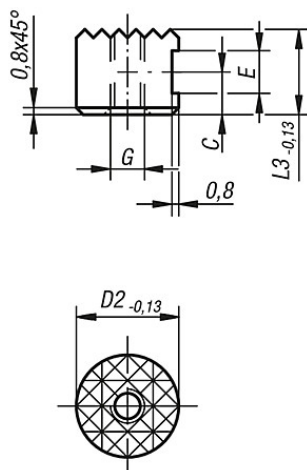
Form O  
stainless steel insert, flattened,  
plain with diamond surface



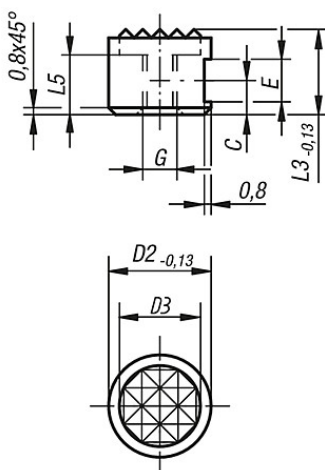
Form P  
stainless steel insert, flattened,  
plain with polyurethane surface



Form F  
serrated, flattened gripper



Form M  
gripper flattened,  
serration in hard metal



## Overview of items

## Round inserts Form C, E, K, O

Order No. Form C	Order No. Form E	Order No. Form K	Order No. Form O	D2	L3	L4	G
07113-10108	07113-10102	07113-10109	07113-10105	10	10	5	M5
07113-10128	07113-10122	07113-10129	07113-10125	10	12	6,4	M5
07113-12108	07113-12102	07113-12109	07113-12105	12	10	5	M5
07113-12128	07113-12122	07113-12129	07113-12125	12	12	6,4	M5
07113-16108	07113-16102	07113-16109	07113-16105	16	10	5	M6
07113-16128	07113-16122	07113-16129	07113-16125	16	12	6,4	M6
07113-20108	07113-20102	07113-20109	07113-20105	20	10	5	M6
07113-20128	07113-20122	07113-20129	07113-20125	20	12	6,4	M6
07113-25108	07113-25102	07113-25109	07113-25105	25	10	5	M6
07113-25128	07113-25122	07113-25129	07113-25125	25	12	6,4	M6

## Round inserts Form P

Order No.	Form	D2	D3	L3	L4	G
07113-08126	Form P	8	8	12	6	M4
07113-10126	Form P	10	10	12	6	M5
07113-12126	Form P	12	13	12	6	M5
07113-16126	Form P	16	16	12	6	M6
07113-20126	Form P	20	21	12	6	M6
07113-25126	Form P	25	27	12	6	M6

## Grippers Form F, M

Order No. Form F	Order No. Form M	D2	D3	L3	L5	C	E	G
07113-1010	07113-10107	10	-/7,9	10	-/6	4,5	4,75	M5
07113-1210	07113-12107	12	-/9,5	10	-/6	4,5	4,75	M5
07113-1212	07113-12127	12	-/9,5	12	-/7	6	4,75	M5
07113-1610	07113-16107	16	-/12,7	10	-/6	4,5	4,75	M6
07113-2010	07113-20107	20	-/15,9	10	-/6	4,5	4,75	M6
07113-2510	07113-25107	25	-/19	10	-/6	4,5	4,75	M6